

LISA-RS

~15° spot beam optimized for Golden Dragon

SPECIFICATION:

| | |
|----------------|-----------|
| Dimensions | Ø 11.0 mm |
| Height | 7.9 mm |
| Fastening | glue |
| ROHS compliant | yes ⓘ |

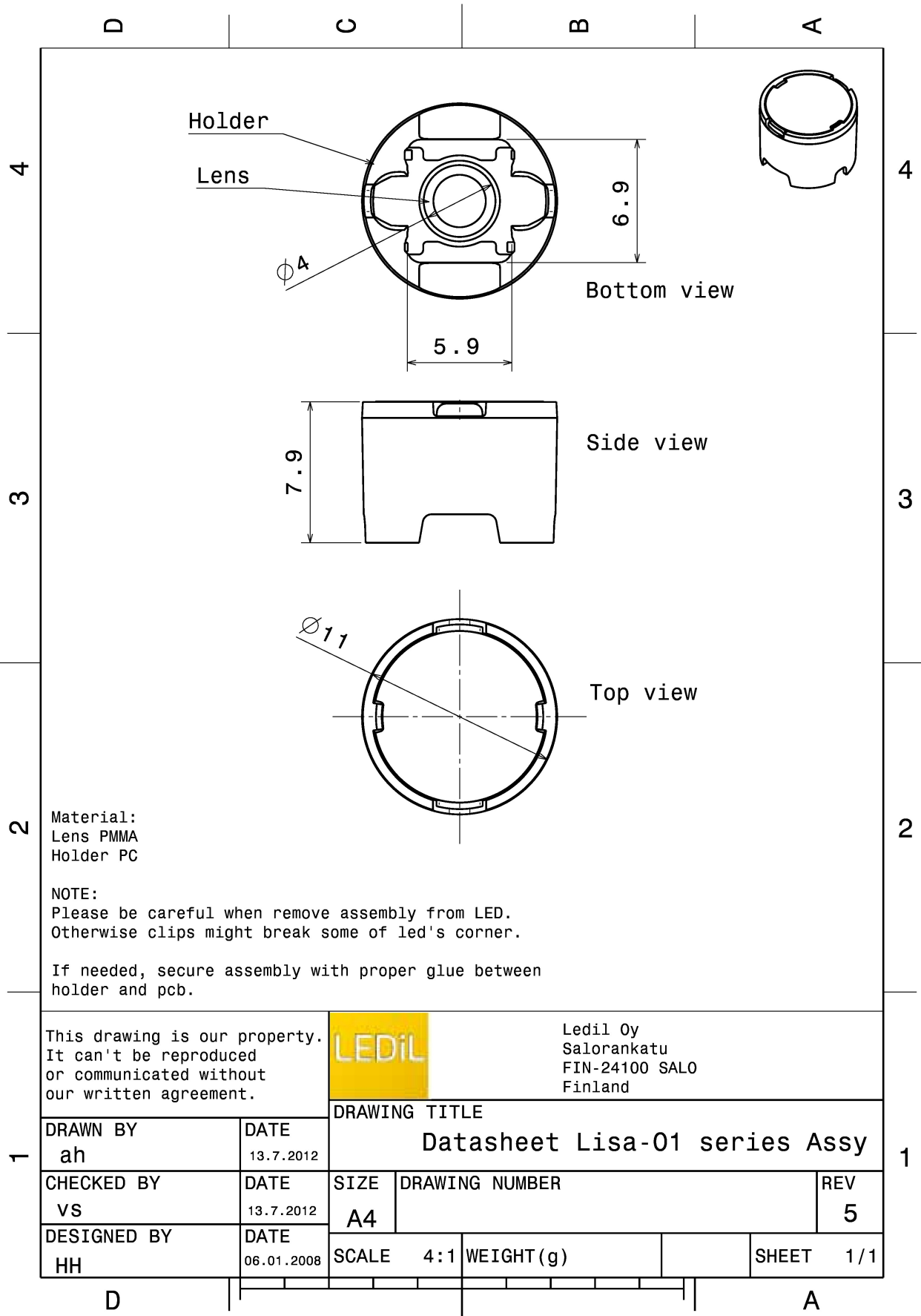
MATERIALS:

| Component | Type | Material | Colour | Finish |
|-------------|-------------|----------|--------|--------|
| LISA-O1-RS | Single lens | PMMA | clear | |
| LISA-O1-HLD | Holder | PC | white | |

ORDERING INFORMATION:

| Component | Type | Qty in box | MOQ | MPQ | Box weight (kg) |
|---|-------------|------------|-----|-----|-----------------|
| CP11626_LISA-RS » Box size: 254 x 298 x 241 mm | Single lens | 10000 | 300 | 100 | 5.5 |





See also our general installation guide: www.ledil.com/installation_guide

OPTICAL RESULTS (MEASURED):

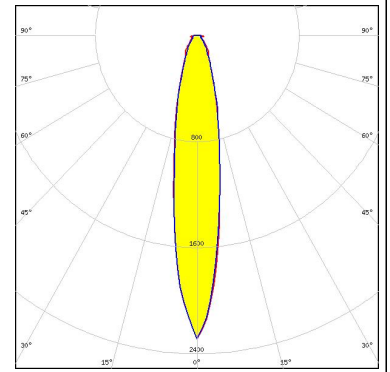
OSRAM
Opto Semiconductors

| | |
|----------------------|---------------|
| LED | Golden Dragon |
| FWHM / FWTM | 12.0° / 31.0° |
| Efficiency | 91 % |
| LEDs/each optic | 1 |
| Light colour | White |
| Required components: | |

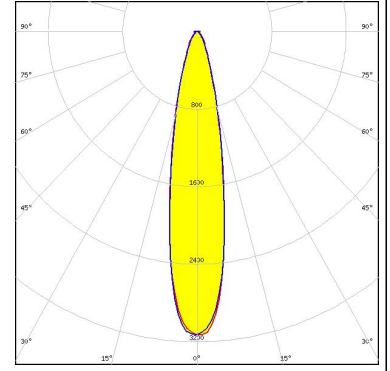
OPTICAL RESULTS (SIMULATED):



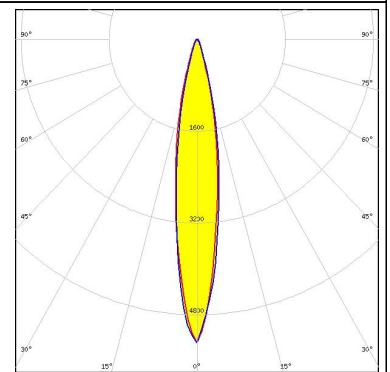
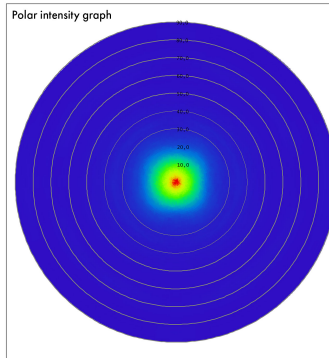
LED XHP35.2 HI
 FWHM / FWTM 18.0° / 53.0°
 Efficiency 76 %
 Peak intensity 2.3 cd/lm
 LEDs/each optic 1
 Light colour White
 Required components:



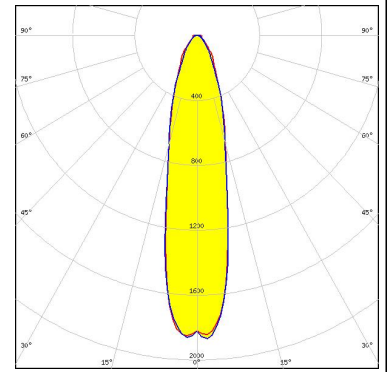
LED XP-G3
 FWHM / FWTM 21.0° / 47.0°
 Efficiency 85 %
 Peak intensity 3.2 cd/lm
 LEDs/each optic 1
 Light colour White
 Required components:



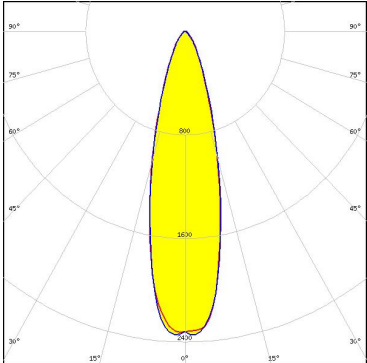
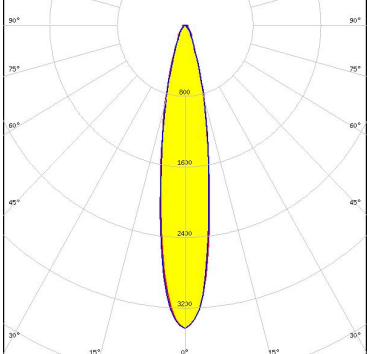
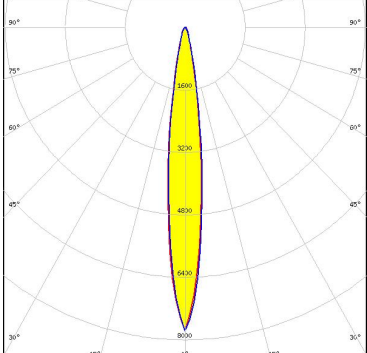
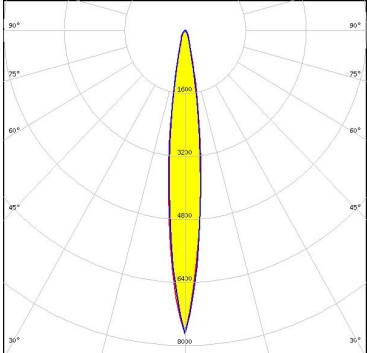
LED SST-10-IR-B90
 FWHM / FWTM 17.0° / 37.0°
 Efficiency 86 %
 LEDs/each optic 1
 Light colour IR
 Required components:



LED NV4WB35AM
 FWHM / FWTM 24.0° / 65.0°
 Efficiency 80 %
 Peak intensity 1.9 cd/lm
 LEDs/each optic 1
 Light colour White
 Required components:



OPTICAL RESULTS (SIMULATED):

| | |
|--|---|
| <p>NICHIA</p> <p>LED: NVSW519A FWHM / FWTM: 28.0° / 58.0° Efficiency: 85 % Peak intensity: 2.4 cd/lm LEDs/each optic: 1 Light colour: White Required components:</p> |  |
| <p>NICHIA</p> <p>LED: NVSxx19B/NVSxx19C FWHM / FWTM: 19.0° / 44.0° Efficiency: 81 % Peak intensity: 3.4 cd/lm LEDs/each optic: 1 Light colour: White Required components:</p> |  |
| <p>OSRAM Opto Semiconductors</p> <p>LED: OSOLON SSL 150 FWHM / FWTM: 13.0° / 28.0° Efficiency: 87 % Peak intensity: 7.8 cd/lm LEDs/each optic: 1 Light colour: White Required components:</p> |  |
| <p>OSRAM Opto Semiconductors</p> <p>LED: OSOLON SSL 150 FWHM / FWTM: 12.0° / 28.0° Efficiency: 87 % Peak intensity: 7.7 cd/lm LEDs/each optic: 1 Light colour: Red Required components:</p> |  |

OPTICAL RESULTS (SIMULATED):

OSRAM
Opto Semiconductors

| | |
|----------------------|---------------|
| LED | SFH 4727AS |
| FWHM / FWTM | 17.0° / 49.0° |
| Efficiency | 83 % |
| LEDs/each optic | 1 |
| Light colour | IR |
| Required components: | |

