

LXP3-RS

~9.6° spot beam optimized for CREE XP-E. 14.7 mm high assembly.

SPECIFICATION:

Dimensions	Ø 21.6 mm
Height	14.7 mm
Fastening	glue
ROHS compliant	yes ⓘ

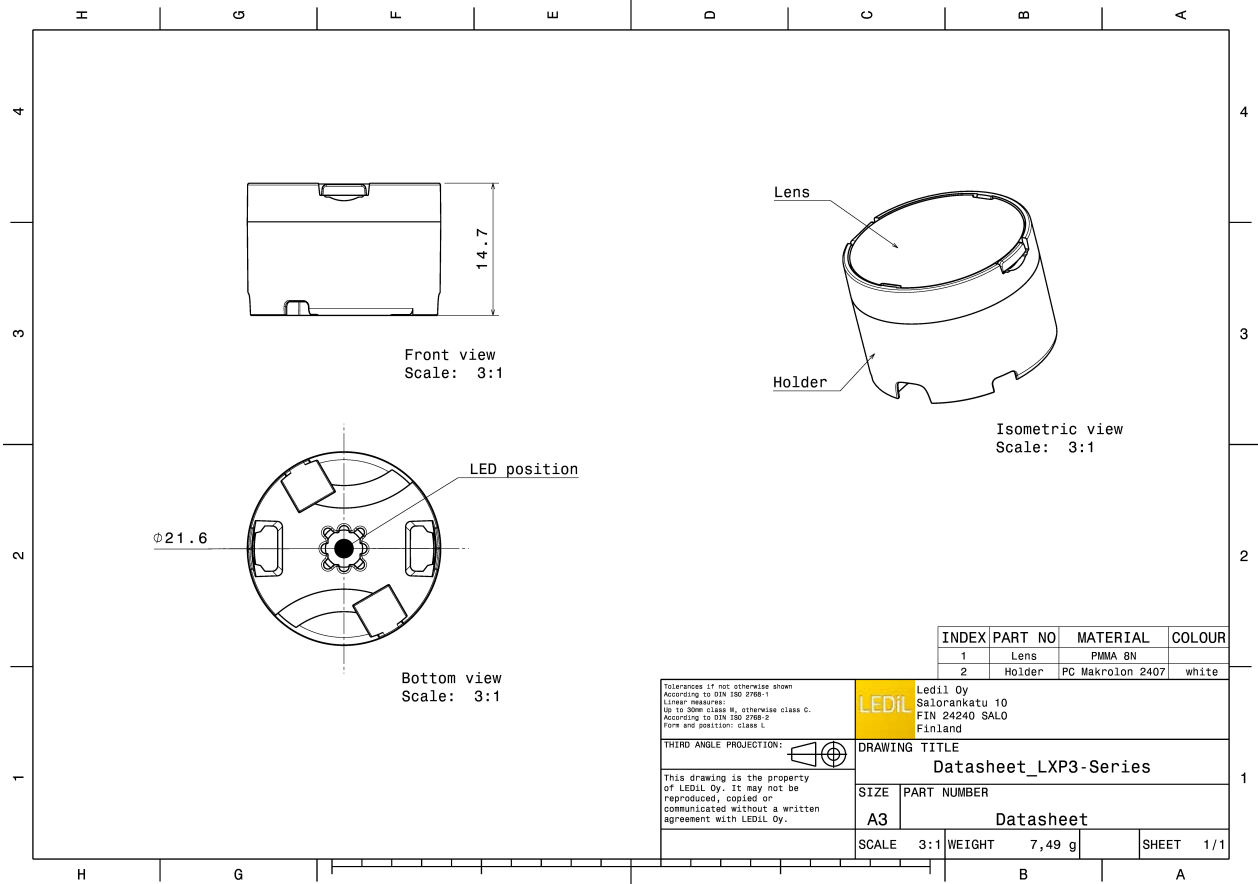


MATERIALS:

Component	Type	Material	Colour	Finish
LXP2-RS	Single lens	PMMA	clear	
LXP3-LH1-WHT	Holder	PC	white	

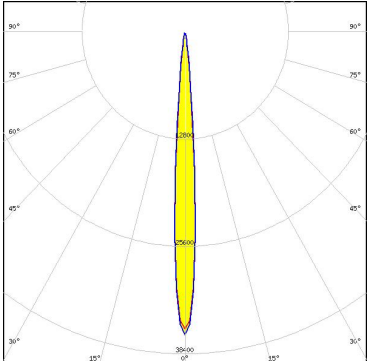
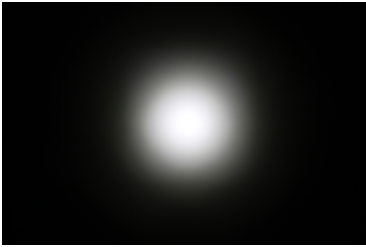
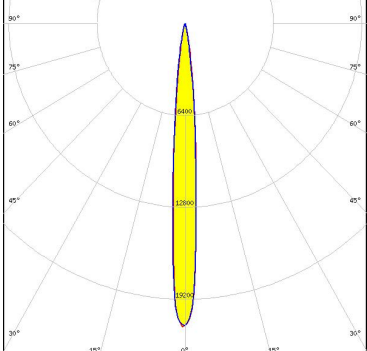
ORDERING INFORMATION:

Component		Qty in box	MOQ	MPQ	Box weight (kg)
CP11631_LXP3-RS	Single lens	1680	0	112	0.0
» Box size: 480 x 280 x 300 mm					



See also our general installation guide: www.ledil.com/installation_guide

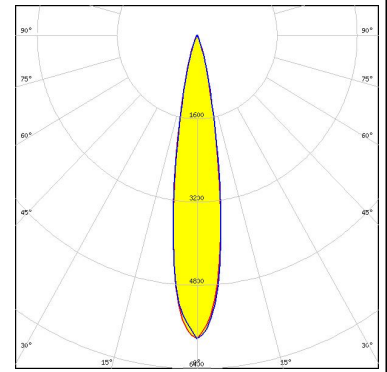
OPTICAL RESULTS (MEASURED):

<p>CREE LEDs</p> <p>LED: XP-E FWHM / FWTM: 7.0° Efficiency: 94 % Peak intensity: 36 cd/lm LEDs/each optic: 1 Light colour: White Required components:</p>	
<p>CREE LEDs</p> <p>LED: XP-G FWHM / FWTM: 10.0° Efficiency: 92 % Peak intensity: 16.5 cd/lm LEDs/each optic: 1 Light colour: White Required components:</p>	
<p>CREE LEDs</p> <p>LED: XP-L HI FWHM / FWTM: 9.0° / 20.0° Efficiency: 93 % Peak intensity: 21 cd/lm LEDs/each optic: 1 Light colour: White Required components:</p>	 

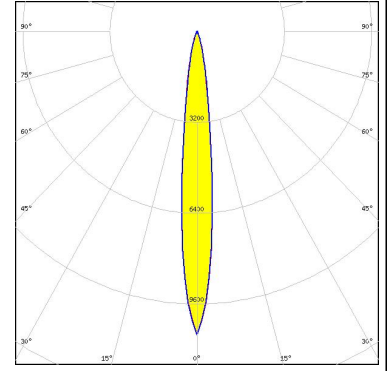
OPTICAL RESULTS (SIMULATED):



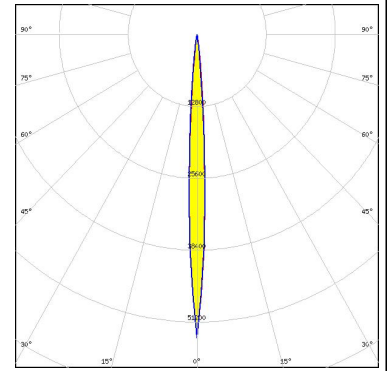
LED XHP35.2 HD
 FWHM / FWTM 18.0° / 34.0°
 Efficiency 78 %
 Peak intensity 5.8 cd/lm
 LEDs/each optic 1
 Light colour White
 Required components:



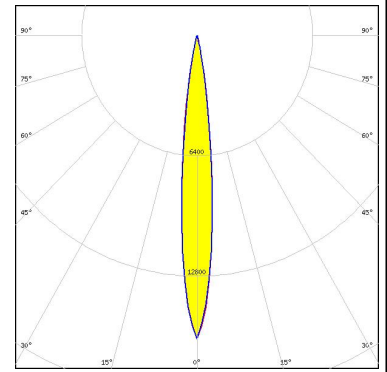
LED XHP35.2 HI
 FWHM / FWTM 12.0° / 28.0°
 Efficiency 86 %
 Peak intensity 10.7 cd/lm
 LEDs/each optic 1
 Light colour White
 Required components:



LED LUXEON CZ
 FWHM / FWTM 6.0° / 14.0°
 Efficiency 95 %
 Peak intensity 54 cd/lm
 LEDs/each optic 1
 Light colour Red
 Required components:



LED LUXEON HL2X
 FWHM / FWTM 12.0° / 24.0°
 Efficiency 93 %
 Peak intensity 16.1 cd/lm
 LEDs/each optic 1
 Light colour White
 Required components:



OPTICAL RESULTS (SIMULATED):

		
LED	SST-20	
FWHM / FWTM	8.0° / 18.0°	
Efficiency	95 %	
Peak intensity	25.2 cd/lm	
LEDs/each optic	1	
Light colour	White	
Required components:		
		
LED	Z5	
FWHM / FWTM	10.0°	
Efficiency	%	
LEDs/each optic	1	
Light colour	White	
Required components:		