

LXP3-D

~14° diffused spot beam optimized for CREE XP-E. 14.7 mm high assembly.

SPECIFICATION:

Dimensions	Ø 21.6 mm
Height	14.7 mm
Fastening	glue
ROHS compliant	yes ⓘ

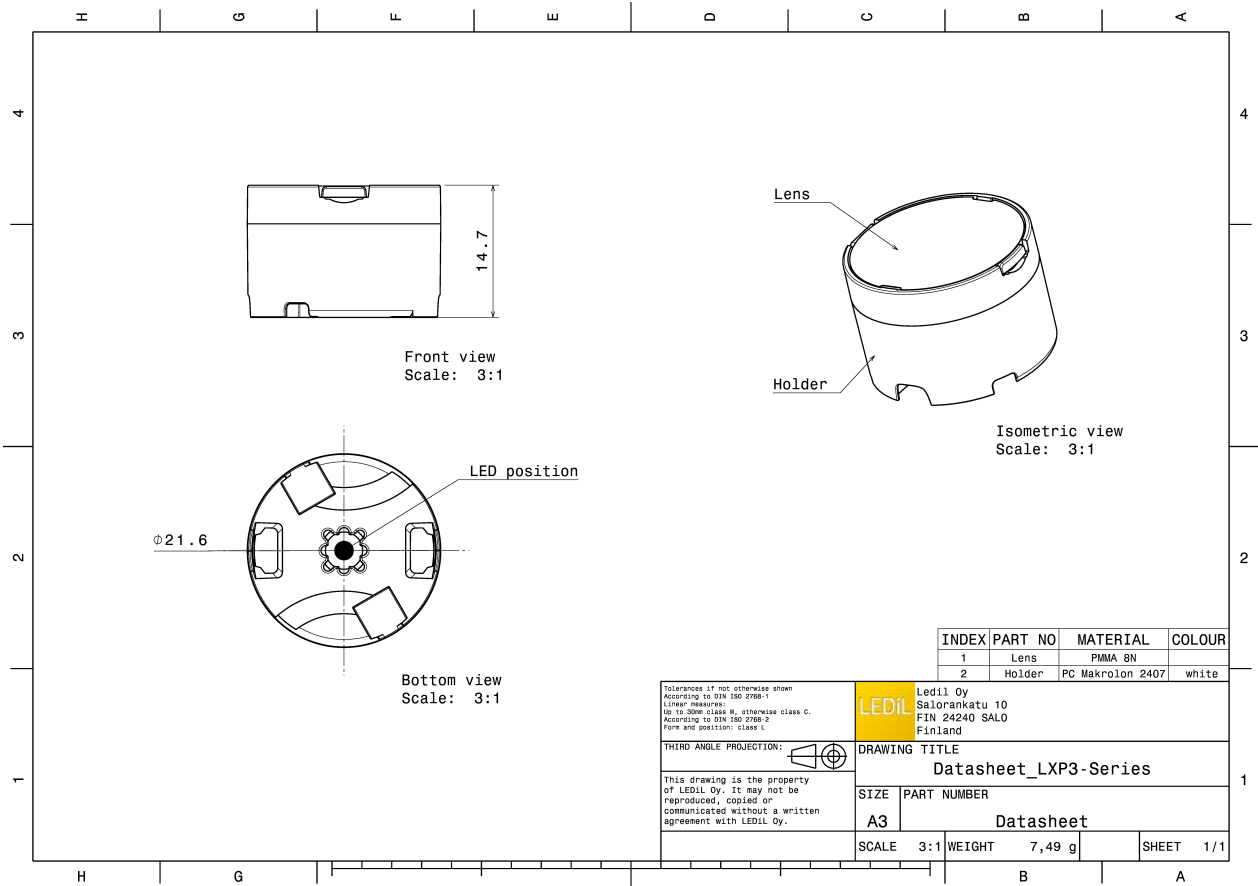


MATERIALS:

Component	Type	Material	Colour	Finish
LXP2-D	Single lens	PMMA	clear	
LXP3-LH1-WHT	Holder	PC	white	

ORDERING INFORMATION:

Component	Type	Qty in box	MOQ	MPQ	Box weight (kg)
CP11632_LXP3-D » Box size: 480 x 280 x 300 mm	Single lens	1680	336	112	9.0

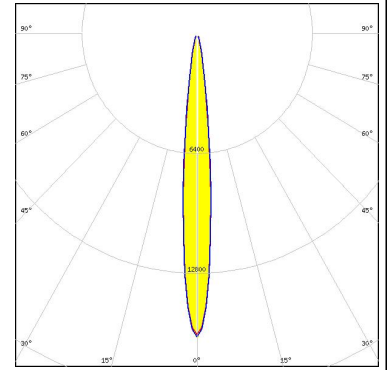


See also our general installation guide: www.ledil.com/installation_guide

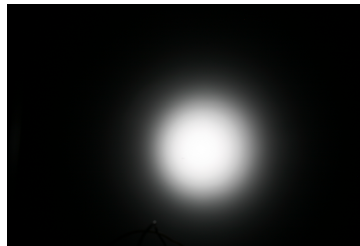
OPTICAL RESULTS (MEASURED):



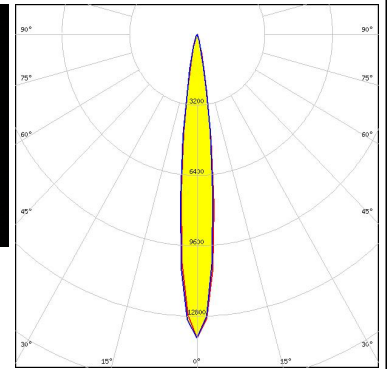
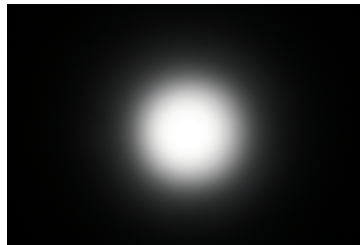
LED XP-E
 FWHM / FWTM 13.0°
 Efficiency 94 %
 LEDs/each optic 1
 Light colour White
 Required components:



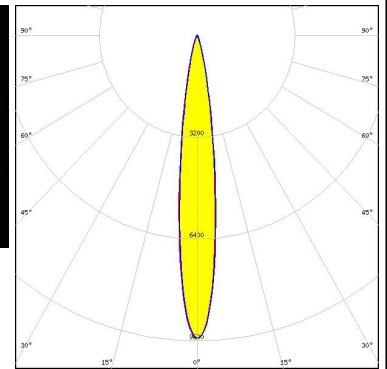
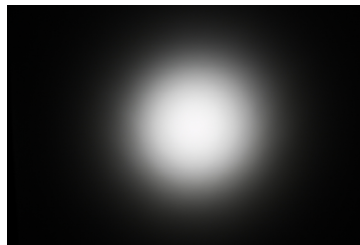
LED XP-G
 FWHM / FWTM 11.0° / 25.0°
 Efficiency 94 %
 Peak intensity 11 cd/lm
 LEDs/each optic 1
 Light colour White
 Required components:



LED XP-G2
 FWHM / FWTM 13.0° / 26.0°
 Efficiency 92 %
 Peak intensity 13.8 cd/lm
 LEDs/each optic 1
 Light colour White
 Required components:



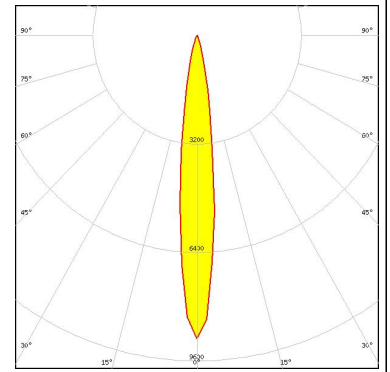
LED XP-L HI
 FWHM / FWTM 14.0° / 29.0°
 Efficiency 91 %
 Peak intensity 9.5 cd/lm
 LEDs/each optic 1
 Light colour White
 Required components:



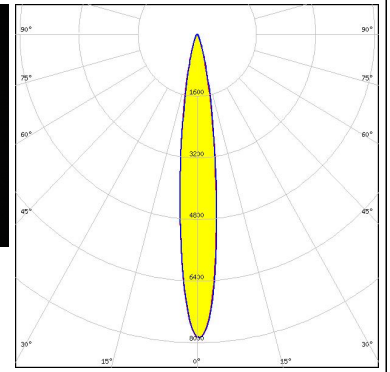
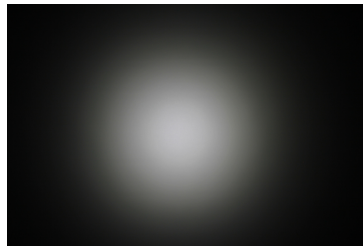
OPTICAL RESULTS (MEASURED):



LED XT-E
FWHM / FWTM 11.0° / 29.0°
Efficiency %
Peak intensity 9 cd/m
LEDs/each optic 1
Light colour White
Required components:



LED TL1L4
FWHM / FWTM 14.0° / 32.0°
Efficiency 92 %
Peak intensity 7.9 cd/m
LEDs/each optic 1
Light colour White
Required components:



OPTICAL RESULTS (SIMULATED):

	
SEOUL SEMICONDUCTOR	
LED	Z5
FWHM / FWTM	13.0°
Efficiency	%
LEDs/each optic	1
Light colour	White
Required components:	