

LOS-RS2

~8.5° spot beam optimized for Osram Oslon Square EC. 14.3 mm high assembly.

SPECIFICATION:

Dimensions	Ø 21.6 mm
Height	14.3 mm
Fastening	pin, glue
ROHS compliant	yes ⓘ

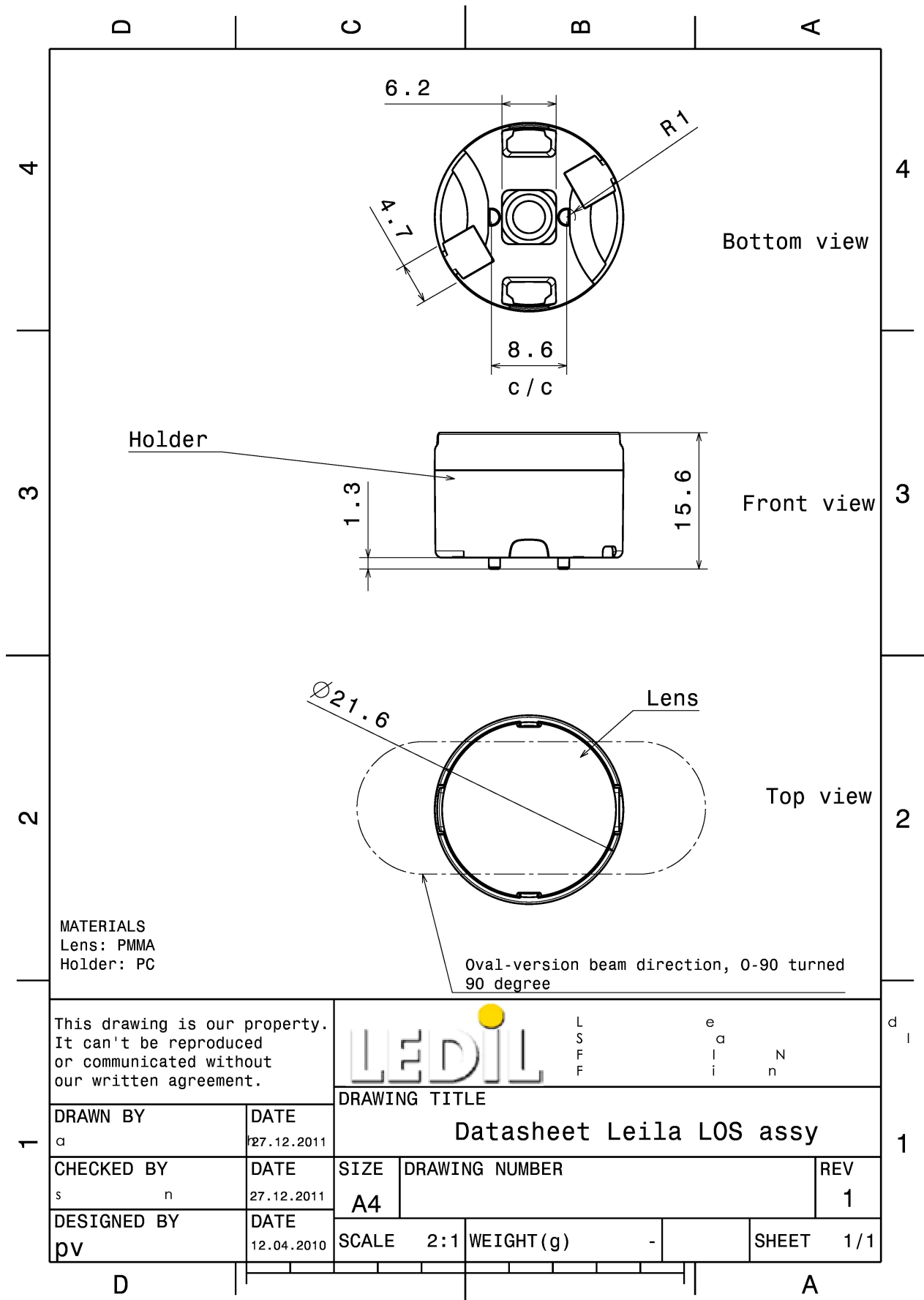



MATERIALS:

Component	Type	Material	Colour	Finish
LXP2-RS2	Single lens	PMMA		
LEILA-HLD-OSL	Holder	PC	white	

ORDERING INFORMATION:

Component	Type	Qty in box	MOQ	MPQ	Box weight (kg)
CP13059_LOS-RS2	Single lens	1680	336	112	10.0
» Box size: 480 x 280 x 300 mm					



This drawing is our property. It can't be reproduced or communicated without our written agreement.				L S F F		e i i n		d i	
DRAWN BY a		DATE 27.12.2011		DRAWING TITLE Datasheet Leila LOS assy					
CHECKED BY s n		DATE 27.12.2011		SIZE A4		DRAWING NUMBER		REV 1	
DESIGNED BY pv		DATE 12.04.2010		SCALE 2:1		WEIGHT (g) -		SHEET 1/1	

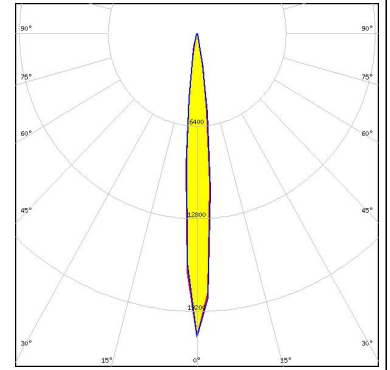
See also our general installation guide: www.ledil.com/installation_guide

OPTICAL RESULTS (MEASURED):

OSRAM

Opto Semiconductors

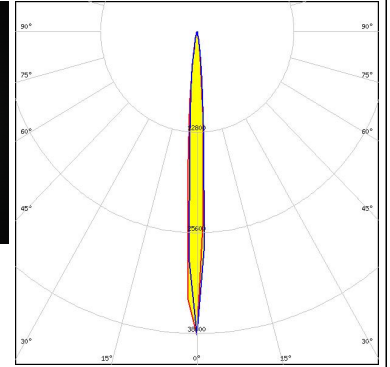
LED OSLON Square EC
FWHM / FWTM 10.0° / 21.0°
Efficiency 92 %
Peak intensity 21 cd/lm
LEDs/each optic 1
Light colour White
Required components:



OSRAM

Opto Semiconductors

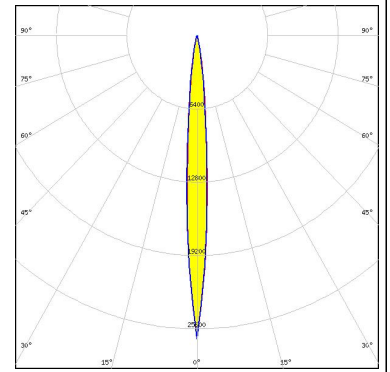
LED OSLON SSL 150
FWHM / FWTM 5.0° / 14.0°
Efficiency 93 %
Peak intensity 38.6 cd/lm
LEDs/each optic 1
Light colour White
Required components:



OPTICAL RESULTS (SIMULATED):

LUMILEDS

LED LUXEON C
FWHM / FWTM 8.0° / 20.0°
Efficiency 95 %
Peak intensity 26.5 cd/lm
LEDs/each optic 1
Light colour White
Required components:



LUMILEDS

LED LUXEON CZ
FWHM / FWTM 7.0° / 15.0°
Efficiency 95 %
Peak intensity 42.2 cd/lm
LEDs/each optic 1
Light colour Red
Required components:

