

IRENE-IR-8

~30° + 30° rectangular beam

SPECIFICATION:

Dimensions	Ø 21.6 mm
Height	14.3 mm
Fastening	glue, pin
ROHS compliant	yes ⓘ

MATERIALS:

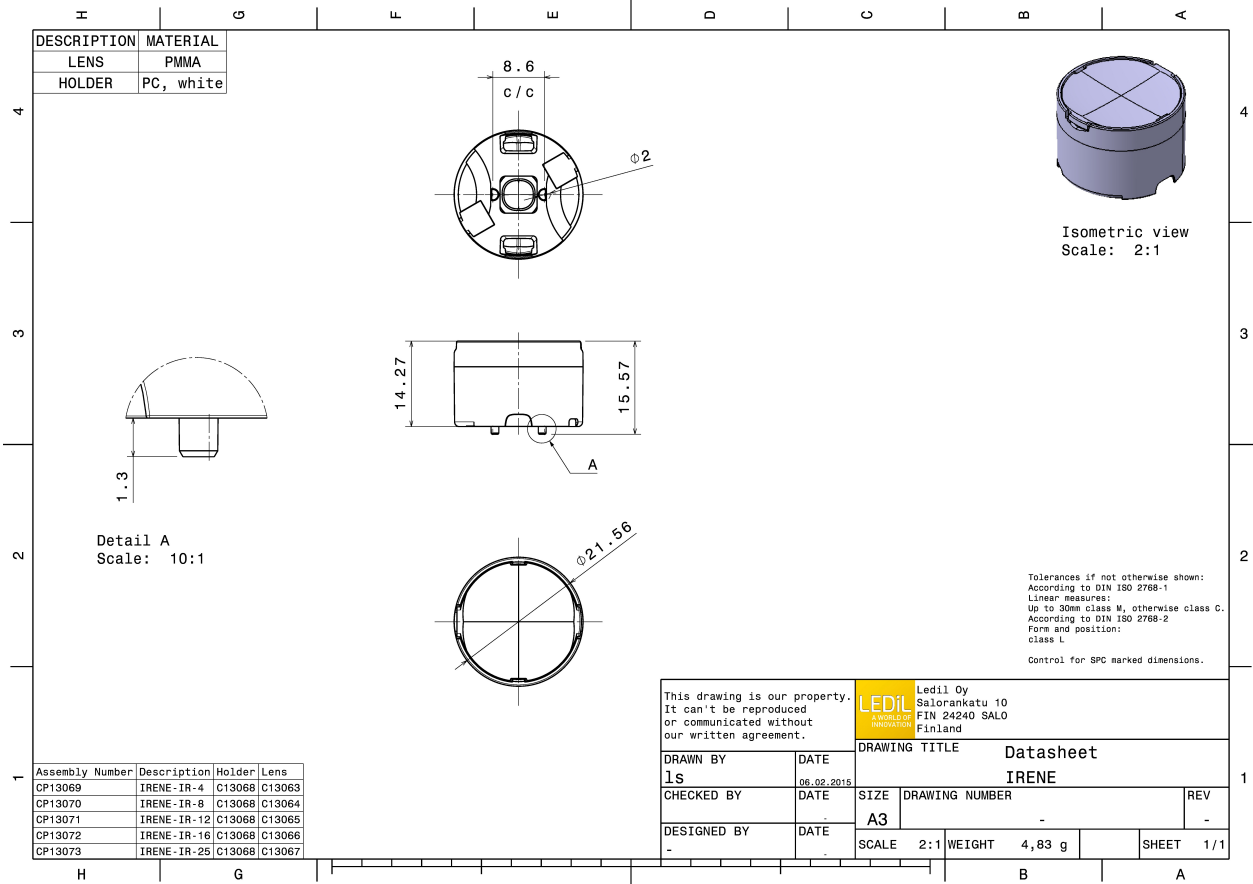
Component	Type	Material	Colour	Finish
IRENE-8	Multi-lens	PMMA	clear	
IRENE-HLD	Holder	PC	white	

ORDERING INFORMATION:

Component	Type	Qty in box	MOQ	MPQ	Box weight (kg)
CP13070_IRENE-IR-8	Multi-lens	1792	336	112	10.6
» Box size: 480 x 280 x 300 mm					



LEDiL



See also our general installation guide: www.ledil.com/installation_guide

OPTICAL RESULTS (MEASURED):

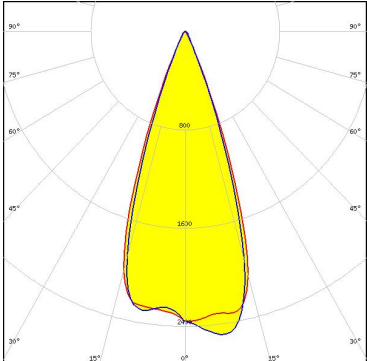
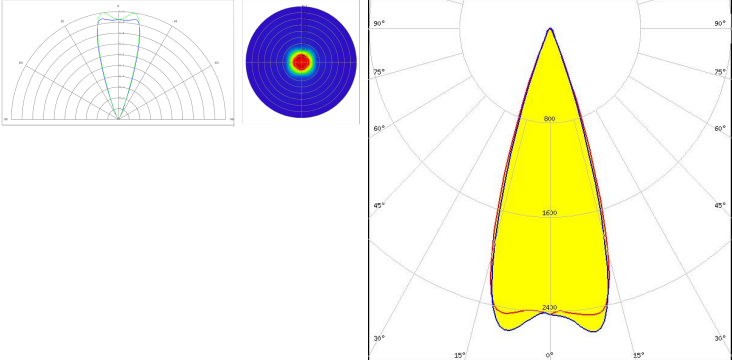
OSRAM
Opto Semiconductors

LED SFH 4715S
FWHM / FWTM 32.0°
Efficiency %
LEDs/each optic 1
Light colour White
Required components:

OSRAM
Opto Semiconductors

LED SFH 4725S
FWHM / FWTM 35.0° / 56.0°
Efficiency %
LEDs/each optic 1
Light colour White
Required components:

OPTICAL RESULTS (SIMULATED):

<p>LUMILEDS</p> <p>LED: LUXEON IR 2720 FWHM / FWTM: 38.0 + 36.0° / 51.0° Efficiency: 97 % LEDs/each optic: 1 Light colour: IR Required components:</p>	
<p>LUMILEDS</p> <p>LED: LUXEON IR Compact FWHM / FWTM: 40.0 + 38.0° / 50.0 + 49.0° Efficiency: 86 % LEDs/each optic: 1 Light colour: White Required components:</p>	
<p>OSRAM <small>Opto Semiconductors</small></p> <p>LED: SFH 4770S FWHM / FWTM: 32.0 + 31.0° / 48.0 + 47.0° Efficiency: 94 % LEDs/each optic: 1 Light colour: White Required components:</p>	
<p>STANLEY</p> <p>LED: FWR1107MS FWHM / FWTM: 36.0 + 34.0° / 48.0 + 47.0° Efficiency: 97 % LEDs/each optic: 1 Light colour: IR Required components:</p>	

OPTICAL RESULTS (SIMULATED):

	<p>LED FWR1108MS FWHM / FWTM 41.0 + 40.0° / 54.0 + 52.0° Efficiency 96 % LEDs/each optic 1 Light colour IR Required components:</p>			
	<p>LED MFN1107MS FWHM / FWTM 42.0° / 54.0° Efficiency 96 % Peak intensity 2.2 cd/lm LEDs/each optic 1 Light colour IR Required components:</p>			
	<p>LED MGN1107MS FWHM / FWTM 42.0° / 54.0° Efficiency 96 % Peak intensity 2.2 cd/lm LEDs/each optic 1 Light colour IR Required components:</p>			
	<p>LED MJN1107MS FWHM / FWTM 38.0 + 37.0° / 50.0 + 48.0° Efficiency 97 % LEDs/each optic 1 Light colour IR Required components:</p>			

OPTICAL RESULTS (SIMULATED):

