

IRENE-IR-12

~25° + 25° rectangular beam

SPECIFICATION:

Dimensions	Ø 21.6 mm
Height	14.3 mm
Fastening	glue, pin
ROHS compliant	yes ⓘ

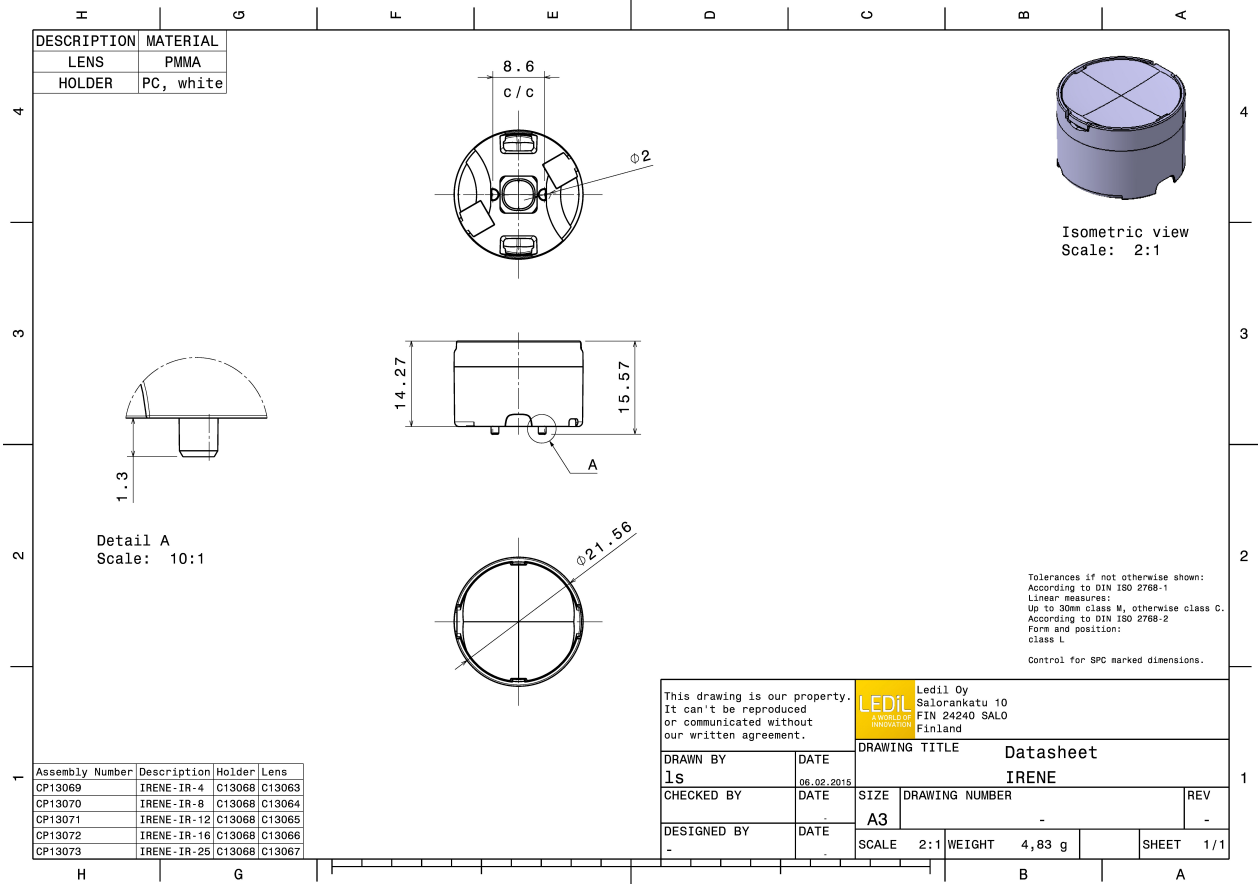
MATERIALS:

Component	Type	Material	Colour	Finish
IRENE-12	Multi-lens	PMMA	clear	
IRENE-HLD	Holder	PC	white	

ORDERING INFORMATION:

Component		Qty in box	MOQ	MPQ	Box weight (kg)
CP13071_IRENE-IR-12	Multi-lens	1792	336	112	10.2
» Box size: 480 x 280 x 300 mm					





See also our general installation guide: www.ledil.com/installation_guide

OPTICAL RESULTS (MEASURED):

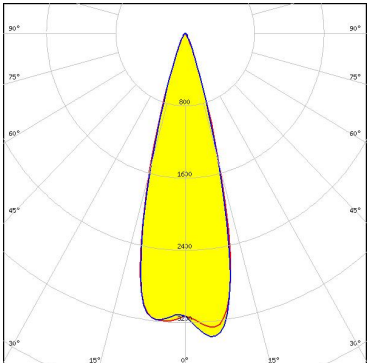
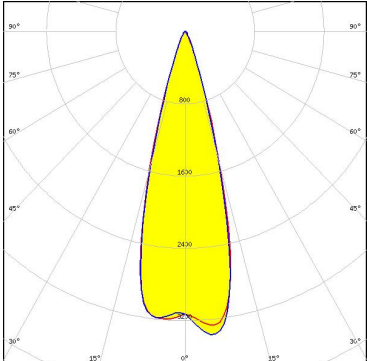
OSRAM
Opto Semiconductors

LED SFH 4715S
FWHM / FWTM 25.0°
Efficiency %
LEDs/each optic 1
Light colour White
Required components:

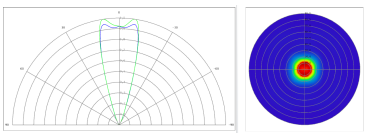
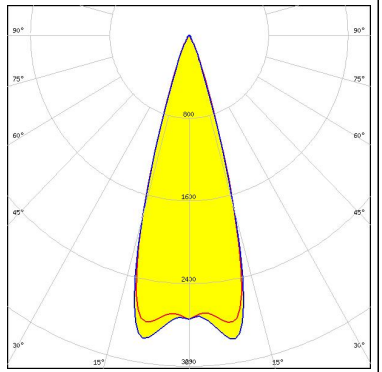
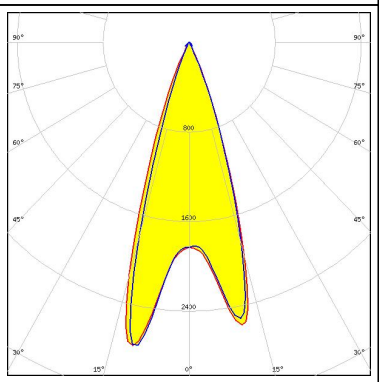
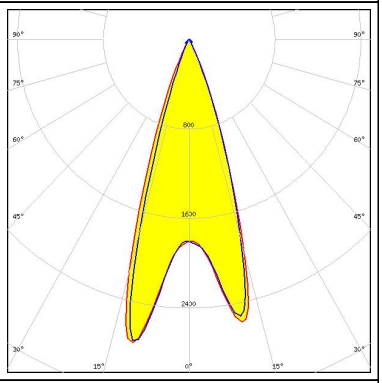
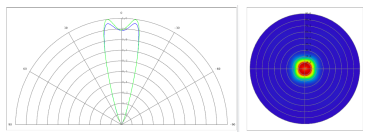
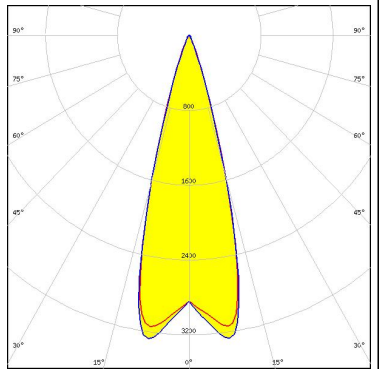
OSRAM
Opto Semiconductors

LED SFH 4725S
FWHM / FWTM 26.0° / 50.0°
Efficiency %
LEDs/each optic 1
Light colour White
Required components:

OPTICAL RESULTS (SIMULATED):

<p>LUMILEDS</p> <p>LED: LUXEON IR 2720 FWHM / FWTM: 29.0° / 44.0° Efficiency: 97 % LEDs/each optic: 1 Light colour: IR Required components:</p>	
<p>LUMILEDS</p> <p>LED: LUXEON IR Compact FWHM / FWTM: 30.0° / 44.0 + 42.0° Efficiency: 87 % LEDs/each optic: 1 Light colour: White Required components:</p>	
<p>OSRAM <small>Opto Semiconductors</small></p> <p>LED: SFH 4770S FWHM / FWTM: 24.0° / 40.0 + 39.0° Efficiency: 94 % LEDs/each optic: 1 Light colour: White Required components:</p>	
<p>STANLEY</p> <p>LED: FWR1107MS FWHM / FWTM: 28.0° / 44.0° Efficiency: 97 % LEDs/each optic: 1 Light colour: IR Required components:</p>	

OPTICAL RESULTS (SIMULATED):

<p>STANLEY</p> <p>LED: FWR1108MS FWHM / FWTM: 32.0° / 46.0° Efficiency: 97 % LEDs/each optic: 1 Light colour: IR Required components:</p>		
<p>STANLEY</p> <p>LED: MFN1107MS FWHM / FWTM: 35.0° / 50.0° Efficiency: 97 % Peak intensity: 2.8 cd/lm LEDs/each optic: 1 Light colour: IR Required components:</p>		
<p>STANLEY</p> <p>LED: MGN1107MS FWHM / FWTM: 35.0° / 49.0° Efficiency: 97 % Peak intensity: 2.8 cd/lm LEDs/each optic: 1 Light colour: IR Required components:</p>		
<p>STANLEY</p> <p>LED: MJN1107MS FWHM / FWTM: 29.0° / 44.0 + 43.0° Efficiency: 97 % LEDs/each optic: 1 Light colour: IR Required components:</p>		

OPTICAL RESULTS (SIMULATED):

