

## FLORENTINA-HLD-O-WAS

Oval beam for wall-washing

### SPECIFICATION:

Dimensions	19.4 x 286.8 mm
Height	9.7 mm
Fastening	screw
ROHS compliant	yes ⓘ

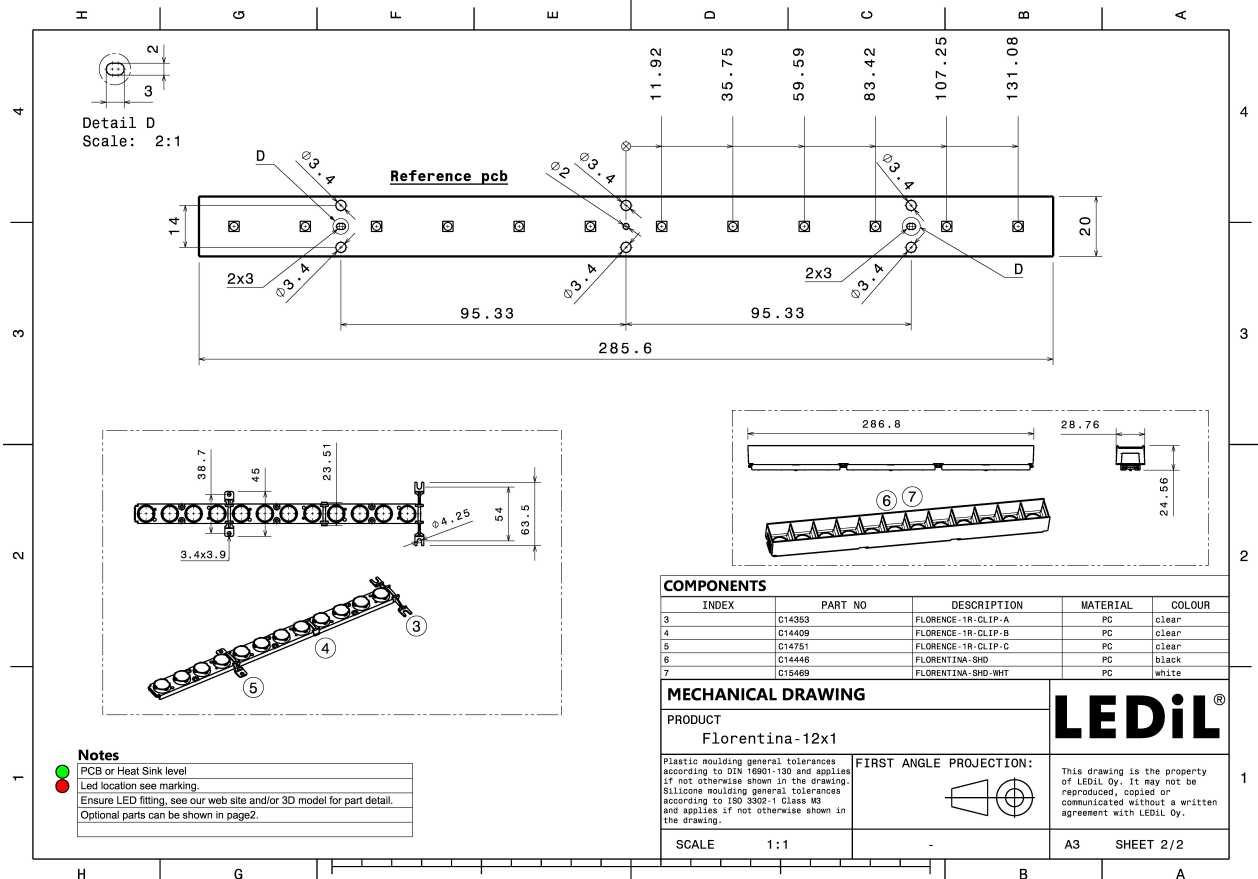
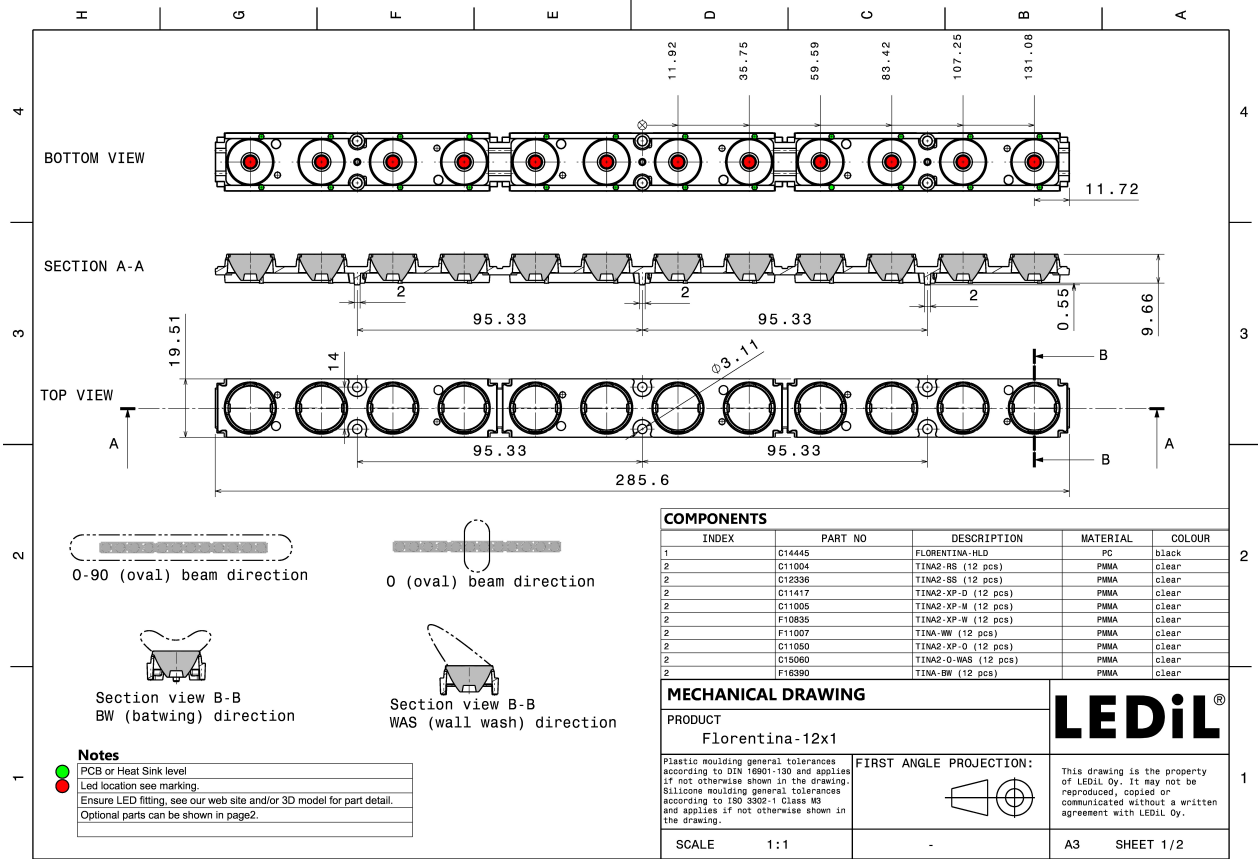
### MATERIALS:

Component	Type	Material	Colour	Finish
TINA2-O-WAS	Single lens	PMMA	clear	
FLORENTINA-HLD	Holder	PC	black	



### ORDERING INFORMATION:

Component	Type	Qty in box	MOQ	MPQ	Box weight (kg)
CP15341_FLORENTINA-HLD-O-WAS » Box size: 398 x 298 x 140 mm	Single lens	160	32	16	3.0

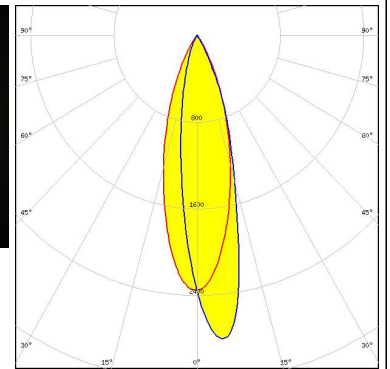
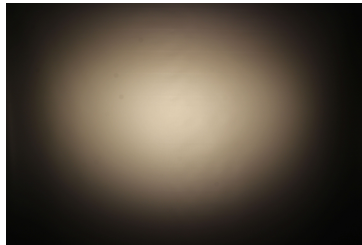


See also our general installation guide: [www.ledil.com/installation\\_guide](http://www.ledil.com/installation_guide)

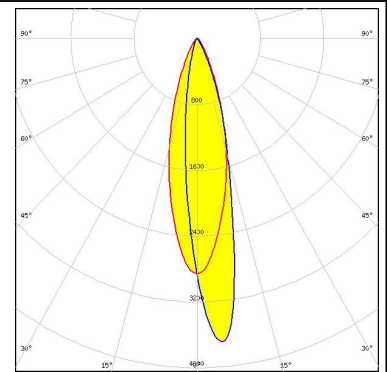
#### OPTICAL RESULTS (MEASURED):



**LED** QUICK FLUX LED FL-XG 1x12 xxx  
**FWHM / FWTM** Asymmetric  
**Efficiency** 74 %  
**Peak intensity** 2.8 cd/m  
**LEDs/each optic** 1  
**Light colour** White  
**Required components:**  
 C14446\_FLORENTINA-SHD



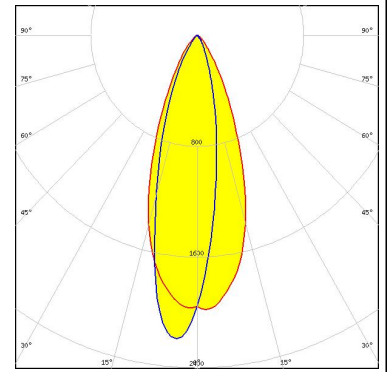
**LED** OSLON Square EC  
**FWHM / FWTM** Asymmetric  
**Efficiency** 84 %  
**Peak intensity** 3.7 cd/m  
**LEDs/each optic** 1  
**Light colour** White  
**Required components:**  
 C14446\_FLORENTINA-SHD



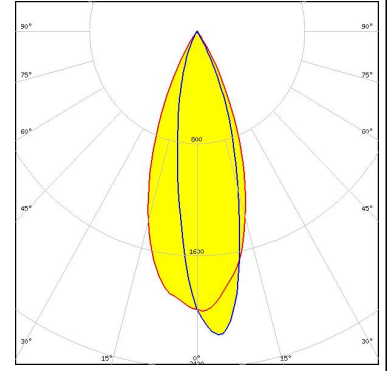
#### OPTICAL RESULTS (SIMULATED):



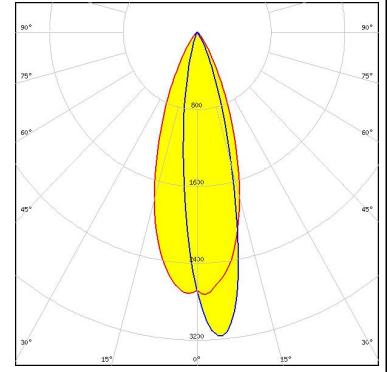
LED J Series 3030  
 FWHM / FWTM Asymmetric  
 Efficiency 84 %  
 Peak intensity 2.2 cd/lm  
 LEDs/each optic 1  
 Light colour White  
 Required components:



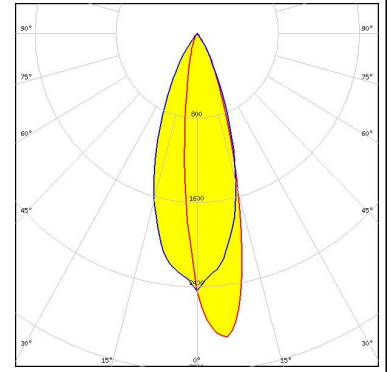
LED J Series 3030  
 FWHM / FWTM Asymmetric  
 Efficiency 72 %  
 Peak intensity 2.2 cd/lm  
 LEDs/each optic 1  
 Light colour White  
 Required components:  
 C14446\_FLORENTINA-SHD



LED LUXEON HL2X  
 FWHM / FWTM Asymmetric  
 Efficiency 90 %  
 Peak intensity 3.2 cd/lm  
 LEDs/each optic 1  
 Light colour White  
 Required components:



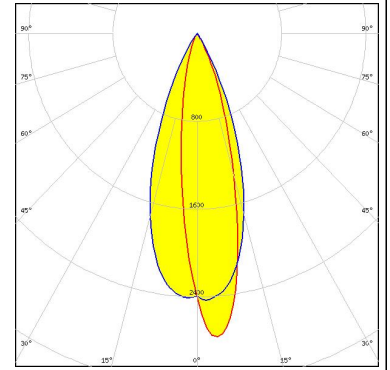
LED NF2W757G-MT (Tunable White)  
 FWHM / FWTM Asymmetric  
 Efficiency 82 %  
 Peak intensity 2.9 cd/lm  
 LEDs/each optic 1  
 Light colour White  
 Required components:  
 C14446\_FLORENTINA-SHD



#### OPTICAL RESULTS (SIMULATED):

##### OSRAM Opto Semiconductors

LED Duris E 2835  
FWHM / FWTM Asymmetric  
Efficiency 80 %  
Peak intensity 2.8 cd/lm  
LEDs/each optic 1  
Light colour White  
Required components:  
C14446\_FLORENTINA-SHD



##### OSRAM Opto Semiconductors

LED Duris S5 (2 chip)  
FWHM / FWTM Asymmetric  
Efficiency 80 %  
Peak intensity 2.8 cd/lm  
LEDs/each optic 1  
Light colour White  
Required components:  
C14446\_FLORENTINA-SHD

