

LEILA-SC-D

~14° diffused spot beam

SPECIFICATION:

Dimensions	Ø 21.6 mm
Height	14.8 mm
Fastening	clips
ROHS compliant	yes ⓘ

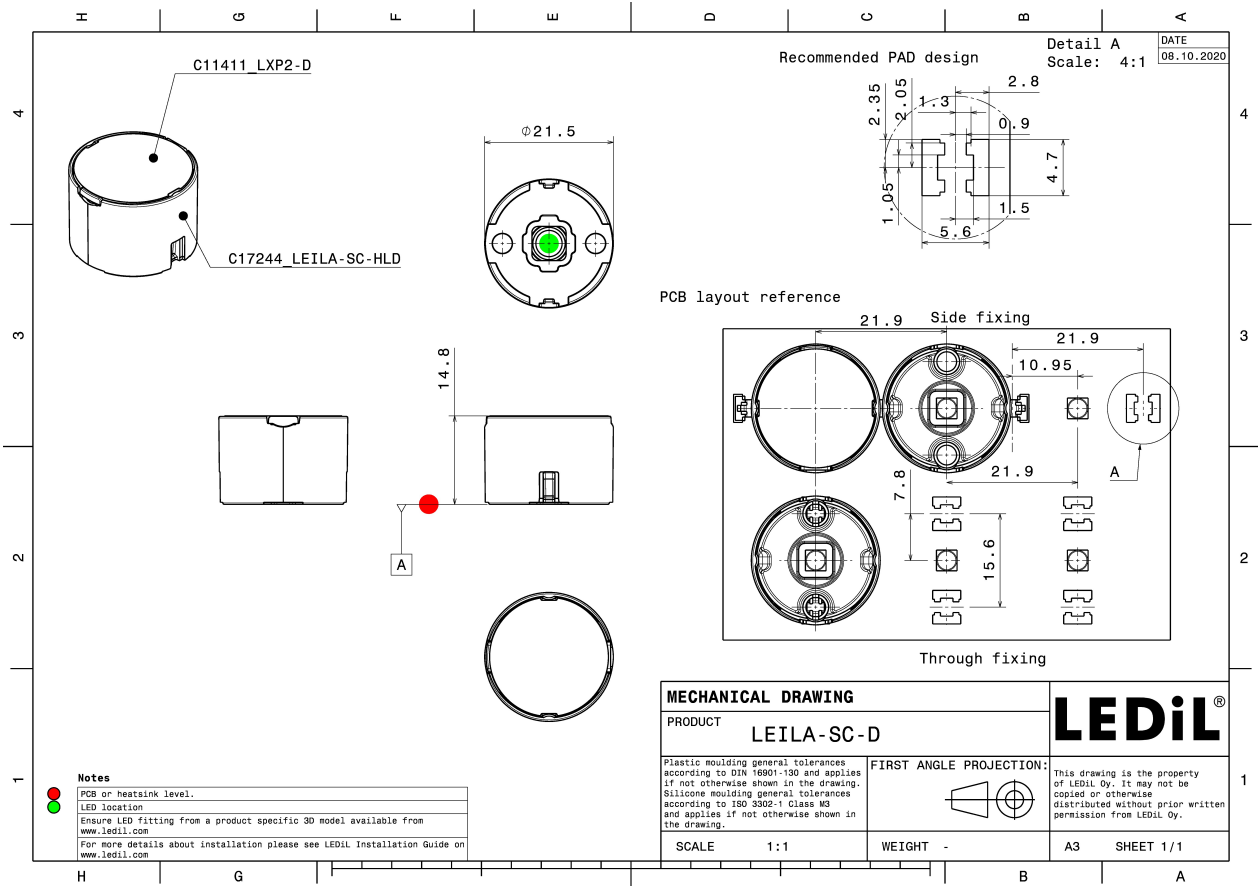
MATERIALS:

Component	Type	Material	Colour	Finish
LXP2-D	Single lens	PMMA	clear	
LEILA-SC-HLD	Holder	PC	black	

ORDERING INFORMATION:

Component		Qty in box	MOQ	MPQ	Box weight (kg)
CP17588_LEILA-SC-D	Single lens	1680	336	112	7.7
» Box size: 480 x 280 x 300 mm					





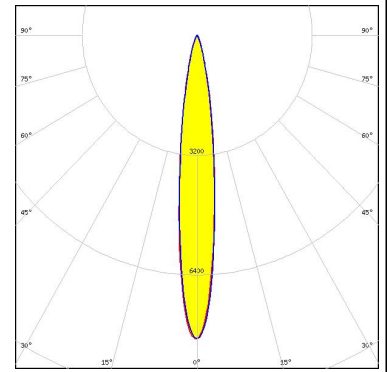
See also our general installation guide: www.ledil.com/installation_guide

OPTICAL RESULTS (MEASURED):

OSRAM

Opto Semiconductors

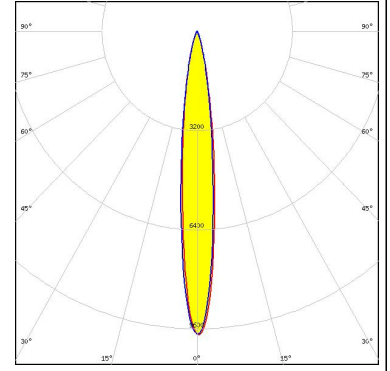
LED OSLON Square CSSRM2/CSSRM3
FWHM / FWTM 14.0° / 31.5°
Efficiency 87 %
Peak intensity 8.1 cd/m
LEDs/each optic 1
Light colour White
Required components:



OSRAM

Opto Semiconductors

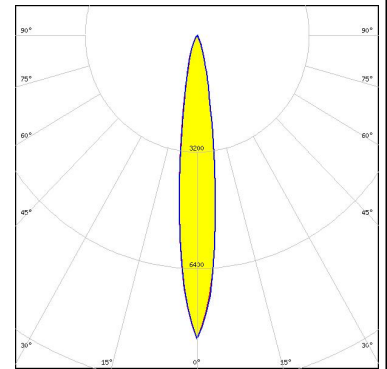
LED OSLON SSL 150
FWHM / FWTM 13.0° / 30.0°
Efficiency 89 %
Peak intensity 9.8 cd/m
LEDs/each optic 1
Light colour White
Required components:



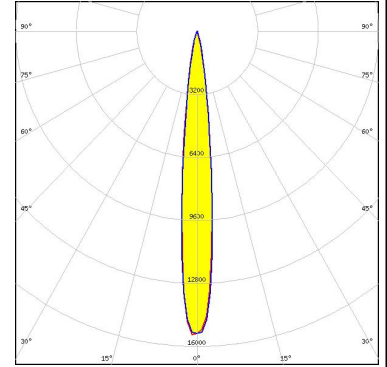
OPTICAL RESULTS (SIMULATED):



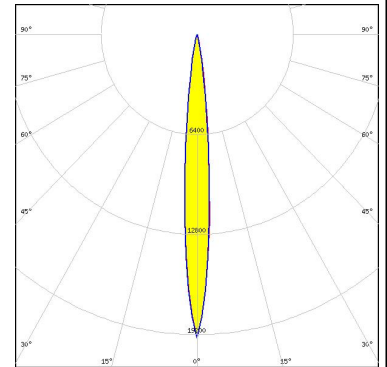
LED CLR6A-TKW
 FWHM / FWTM 14.0° / 34.0°
 Efficiency 93 %
 Peak intensity 8.3 cd/lm
 LEDs/each optic 1
 Light colour RGBW
 Required components:



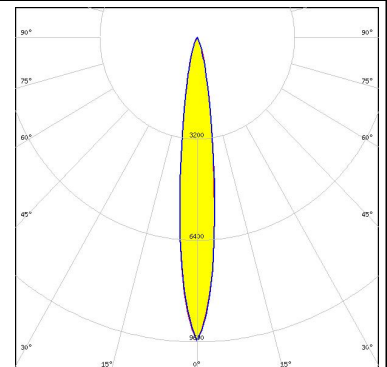
LED XP-G3
 FWHM / FWTM 12.0° / 24.0°
 Efficiency 95 %
 Peak intensity 15.4 cd/lm
 LEDs/each optic 1
 Light colour White
 Required components:



LED LUXEON C
 FWHM / FWTM 10.0° / 21.0°
 Efficiency 87 %
 Peak intensity 19.4 cd/lm
 LEDs/each optic 1
 Light colour White
 Required components:



LED OSCONIQ P 3737 (3W version)
 FWHM / FWTM 14.0° / 32.0°
 Efficiency 93 %
 Peak intensity 9.6 cd/lm
 LEDs/each optic 1
 Light colour White
 Required components:



OPTICAL RESULTS (SIMULATED):

