

### LEILA-SC-O-WAS

Asymmetric beam for wall-washing

#### SPECIFICATION:

Dimensions	Ø 21.6 mm
Height	14.8 mm
Fastening	clips
ROHS compliant	yes ⓘ

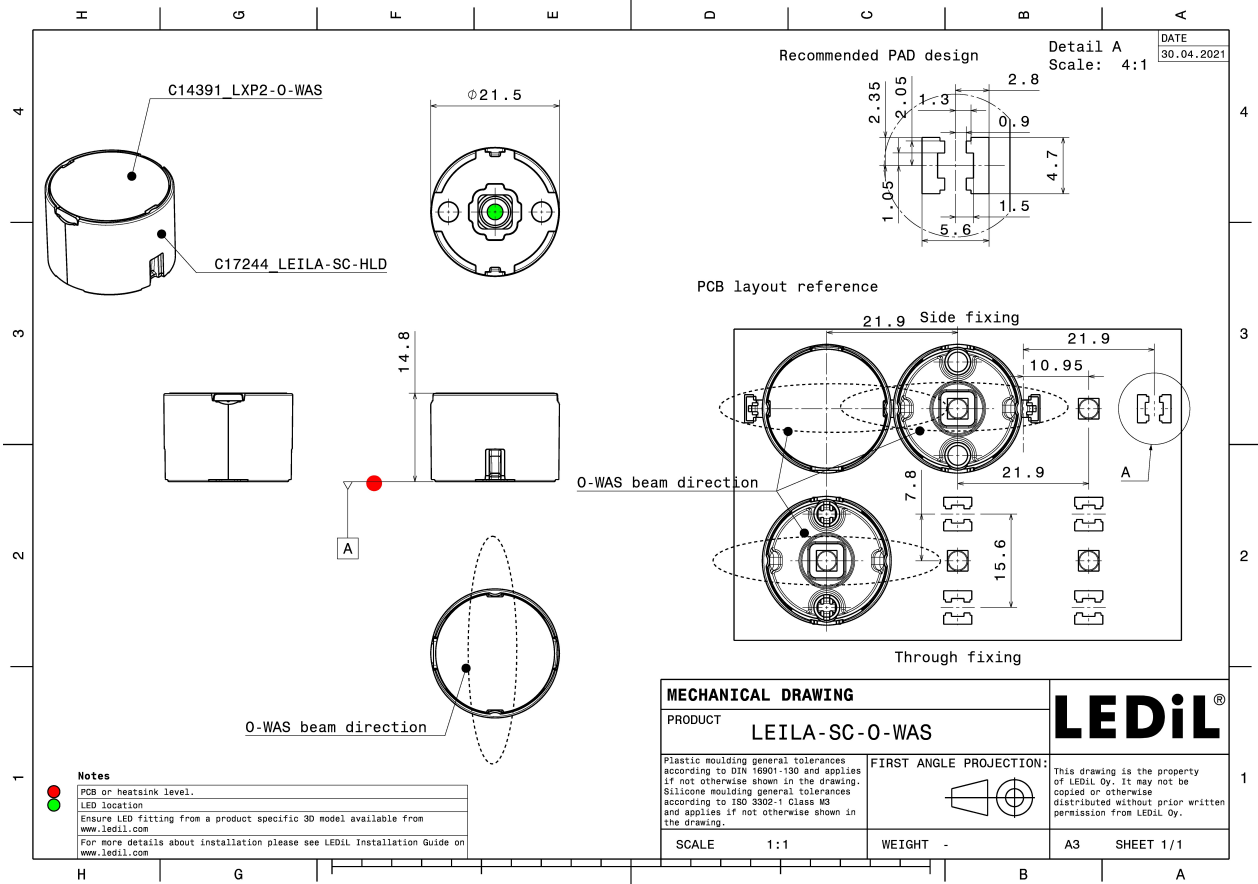
#### MATERIALS:

Component	Type	Material	Colour	Finish
LXP2-O-WAS	Single lens	PMMA	clear	
LEILA-SC-HLD	Holder	PC	black	

#### ORDERING INFORMATION:

Component		Qty in box	MOQ	MPQ	Box weight (kg)
CP17592_LEILA-SC-O-WAS	Single lens	1680	336	112	7.9
» Box size: 480 x 280 x 300 mm					



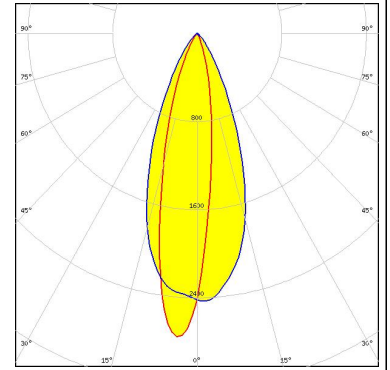


See also our general installation guide: [www.ledil.com/installation\\_guide](http://www.ledil.com/installation_guide)

#### OPTICAL RESULTS (SIMULATED):



LED CLR6A-TKW  
FWHM / FWTM Asymmetric  
Efficiency 88 %  
Peak intensity 2.8 cd/lm  
LEDs/each optic 1  
Light colour RGBW  
Required components:



LED Z5M4  
FWHM / FWTM Asymmetric  
Efficiency 88 %  
Peak intensity 2.8 cd/lm  
LEDs/each optic 1  
Light colour White  
Required components:

