

## TINA-SC-RS

~14° spot beam

### SPECIFICATION:

Dimensions	Ø 16.2 mm
Height	9.9 mm
Fastening	clips
ROHS compliant	yes ⓘ

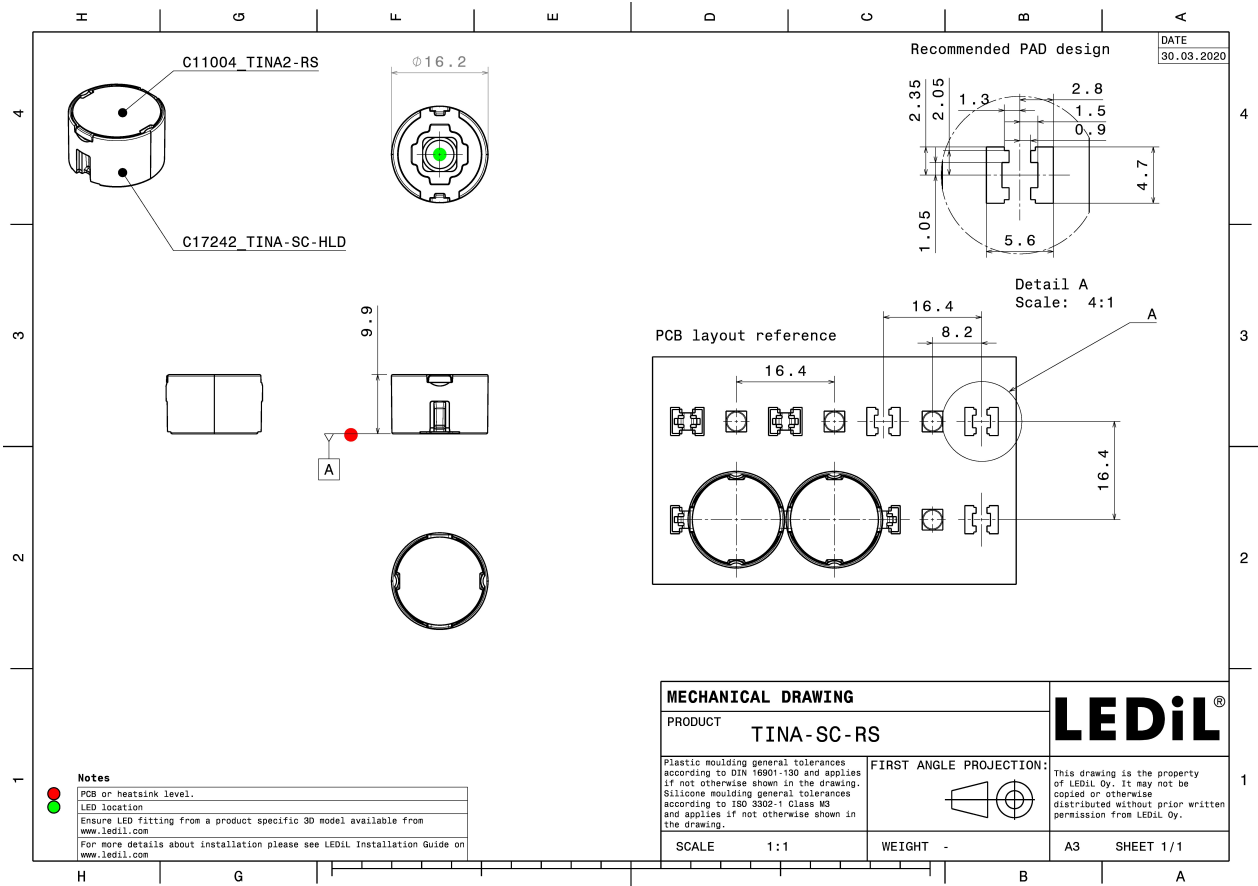
### MATERIALS:

Component	Type	Material	Colour	Finish
TINA2-RS	Single lens	PMMA	clear	
TINA-SC-HLD	Holder	PC	black	

### ORDERING INFORMATION:

Component		Qty in box	MOQ	MPQ	Box weight (kg)
CP17594_TINA-SC-RS	Single lens	2400	240	240	5.0
» Box size: 300 x 250 x 250 mm					




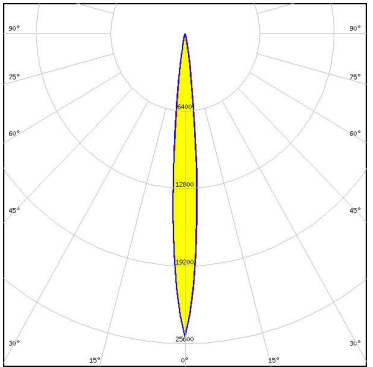

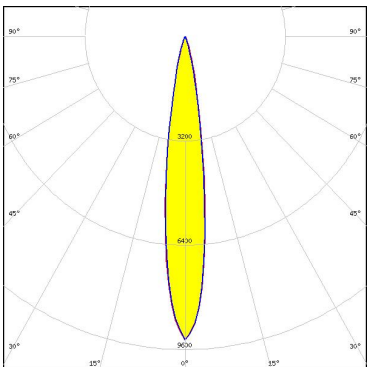

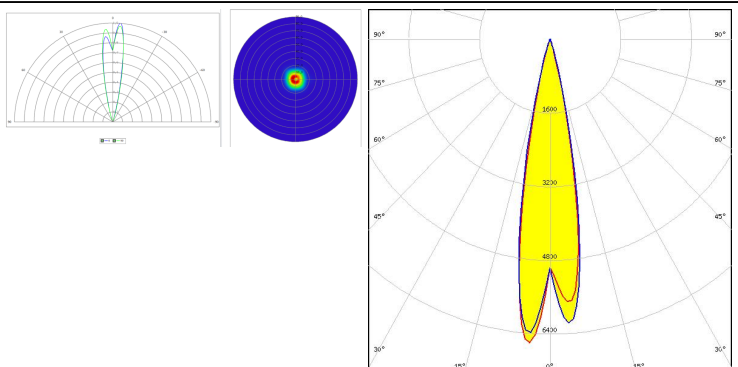

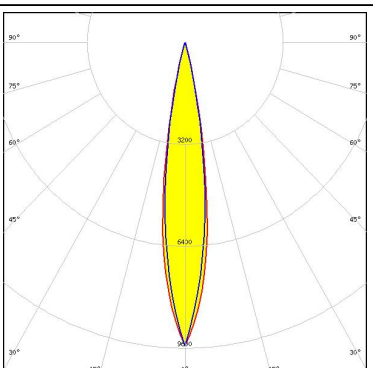


See also our general installation guide: [www.ledil.com/installation\\_guide](http://www.ledil.com/installation_guide)

#### OPTICAL RESULTS (SIMULATED):

<p><b>CREE</b> LEDs</p> <p>LED: CLR6A-TKW            FWHM / FWTM: 21.0° / 40.0°            Efficiency: 91 %            Peak intensity: 4.9 cd/lm            LEDs/each optic: 1            Light colour: RGBW            Required components:</p>	
<p><b>CREE</b> LEDs</p> <p>LED: XP-E2            FWHM / FWTM: 10.0° / 20.0°            Efficiency: 91 %            Peak intensity: 21 cd/lm            LEDs/each optic: 1            Light colour: White            Required components:</p>	
<p><b>CREE</b> LEDs</p> <p>LED: XP-L HI            FWHM / FWTM: 14.0° / 28.0°            Efficiency: 91 %            Peak intensity: 11.3 cd/lm            LEDs/each optic: 1            Light colour: White            Required components:</p>	
<p><b>CREE</b> LEDs</p> <p>LED: XP-L2            FWHM / FWTM: 22.0° / 42.0°            Efficiency: 86 %            Peak intensity: 4.2 cd/lm            LEDs/each optic: 1            Light colour: White            Required components:</p>	

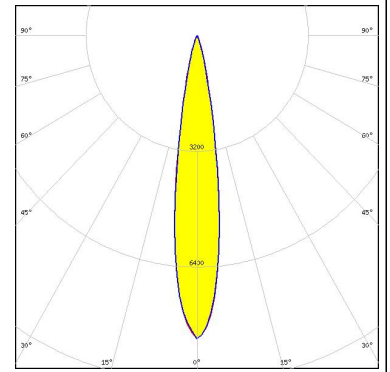
#### OPTICAL RESULTS (SIMULATED):

	<p>LED XQ-E HI            FWHM / FWTM 10.0° / 18.0°            Efficiency 89 %            Peak intensity 25.1 cd/lm            LEDs/each optic 1            Light colour White            Required components:</p>	
	<p>LED OSLOM Square CSSRM2/CSSRM3            FWHM / FWTM 16.0° / 31.0°            Efficiency 89 %            Peak intensity 9.3 cd/lm            LEDs/each optic 1            Light colour White            Required components:</p>	
	<p>LED SFH 4715AS            FWHM / FWTM 21.0° / 32.0°            Efficiency 88 %            LEDs/each optic 1            Light colour IR            Required components:</p>	
	<p>LED SFH 4715S            FWHM / FWTM 17.0° / 28.0°            Efficiency 89 %            Peak intensity 9.5 cd/lm            LEDs/each optic 1            Light colour IR            Required components:</p>	

### OPTICAL RESULTS (SIMULATED):

#### SAMSUNG

LED LH351B  
FWHM / FWTM 16.0° / 31.0°  
Efficiency 90 %  
Peak intensity 8.4 cd/lm  
LEDs/each optic 1  
Light colour White  
Required components:



SEOUL SEMICONDUCTOR

LED Z8Y22  
FWHM / FWTM 16.0° / 36.0°  
Efficiency 76 %  
Peak intensity 6 cd/lm  
LEDs/each optic 1  
Light colour White  
Required components:

