

TINA-SC-O

~35° + 15° oval beam

SPECIFICATION:

Dimensions	Ø 16.2 mm
Height	10.1 mm
Fastening	clips
ROHS compliant	yes ⓘ

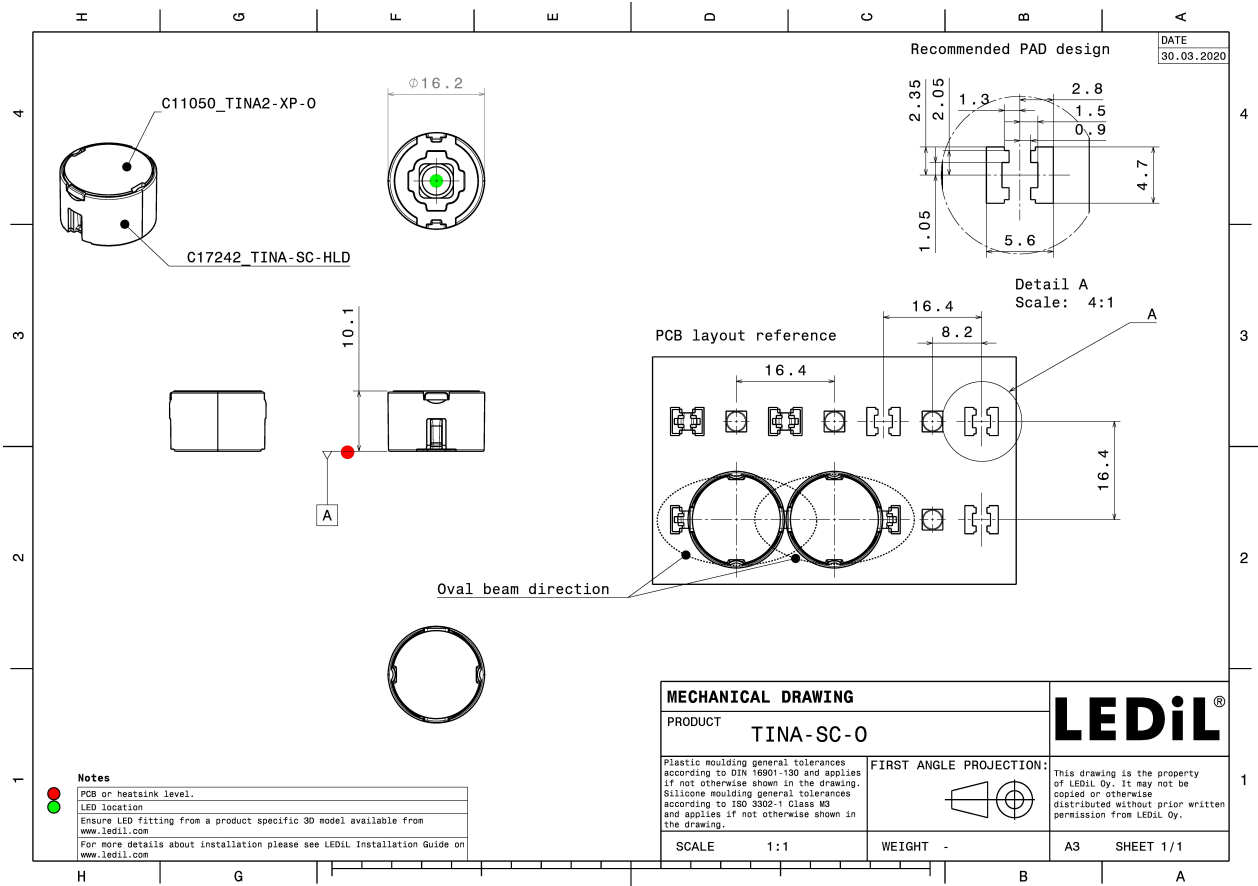
MATERIALS:

Component	Type	Material	Colour	Finish
TINA2-XP-O	Single lens	PMMA	clear	
TINA-SC-HLD	Holder	PC	black	

ORDERING INFORMATION:

Component		Qty in box	MOQ	MPQ	Box weight (kg)
CP17596_TINA-SC-O	Single lens	2400	240	240	5.2
» Box size: 300 x 250 x 250 mm					



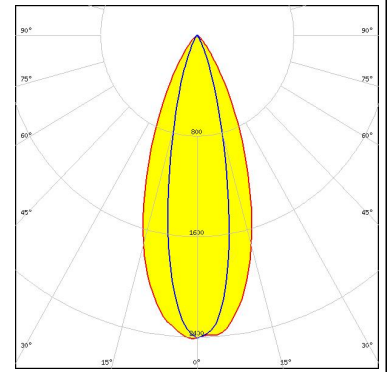


See also our general installation guide: www.ledil.com/installation_guide

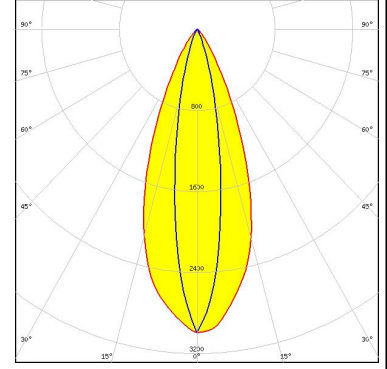
OPTICAL RESULTS (SIMULATED):



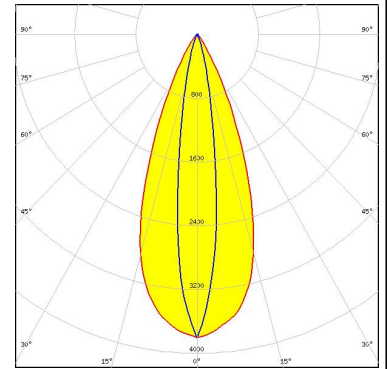
LED CLR6A-TKW
 FWHM / FWTM 41.0 + 23.0° / 72.0 + 45.0°
 Efficiency 87 %
 Peak intensity 2.4 cd/lm
 LEDs/each optic 1
 Light colour RGBW
 Required components:



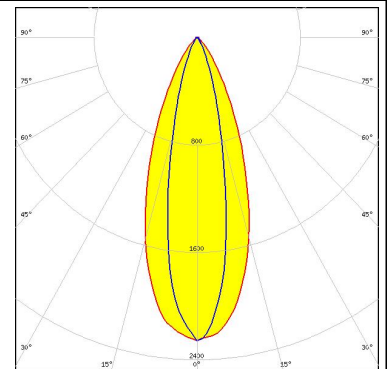
LED J Series 2835
 FWHM / FWTM 40.0 + 18.0° / 68.0 + 39.0°
 Efficiency 86 %
 Peak intensity 3 cd/lm
 LEDs/each optic 1
 Light colour White
 Required components:



LED XP-L HI
 FWHM / FWTM 40.0 + 16.0° / 64.0 + 32.0°
 Efficiency 89 %
 Peak intensity 3.8 cd/lm
 LEDs/each optic 1
 Light colour White
 Required components:



LED XP-L2
 FWHM / FWTM 40.0 + 22.0° / 72.0 + 47.0°
 Efficiency 81 %
 Peak intensity 2.3 cd/lm
 LEDs/each optic 1
 Light colour White
 Required components:



OPTICAL RESULTS (SIMULATED):

SAMSUNG

LED	LM302D
FWHM / FWTM	41.0 + 18.0° / 67.0 + 38.0°
Efficiency	85 %
Peak intensity	3 cd/lm
LEDs/each optic	1
Light colour	White
Required components:	

