

TINA-SC-W

~45° wide beam

SPECIFICATION:

Dimensions	Ø 16.2 mm
Height	9.9 mm
Fastening	clips
ROHS compliant	yes ⓘ

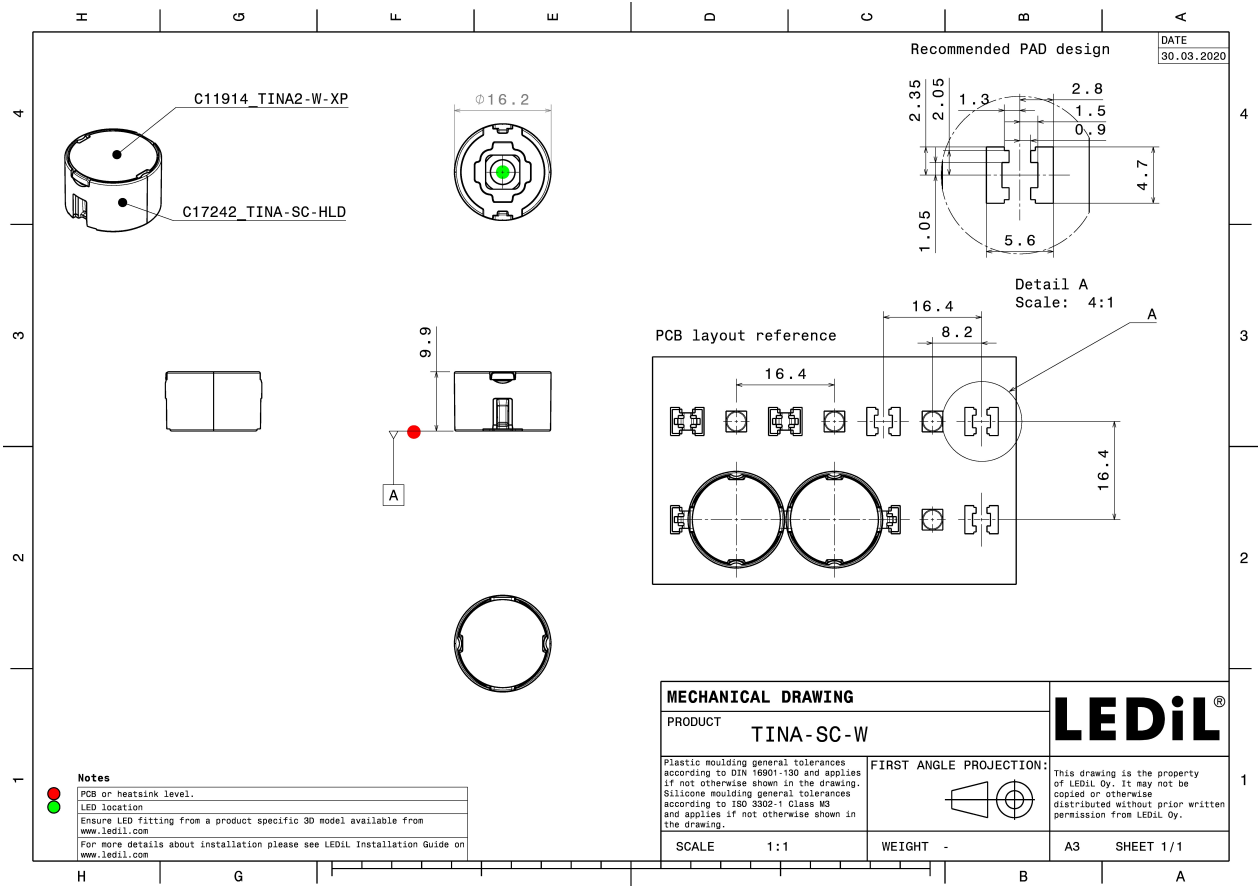
MATERIALS:

Component	Type	Material	Colour	Finish
TINA2-W-XP	Single lens	PMMA	clear	
TINA-SC-HLD	Holder	PC	black	



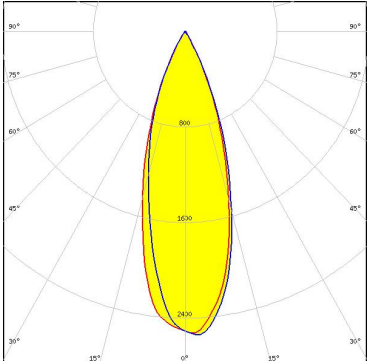
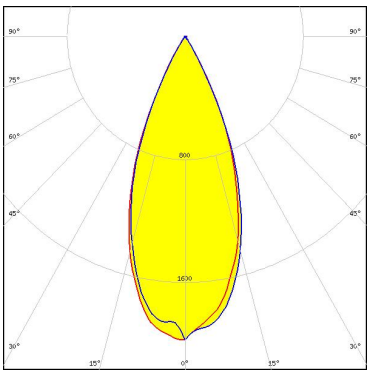
ORDERING INFORMATION:

Component	Type	Qty in box	MOQ	MPQ	Box weight (kg)
CP17597_TINA-SC-W » Box size: 300 x 250 x 250 mm	Single lens	2400	240	240	5.0



See also our general installation guide: www.ledil.com/installation_guide

OPTICAL RESULTS (SIMULATED):

<p>CREE LEDs</p> <p>LED J Series 2835 FWHM / FWTM 34.0° / 58.0° Efficiency 91 % Peak intensity 2.6 cd/lm LEDs/each optic 1 Light colour White Required components:</p>	
<p>CREE LEDs</p> <p>LED XP-L HI FWHM / FWTM 42.0° / 62.0° Efficiency 93 % Peak intensity 2 cd/lm LEDs/each optic 1 Light colour White Required components:</p>	
<p>OSRAM Opto Semiconductors</p> <p>LED OSOLON SSL 80 FWHM / FWTM 36.0° / 60.0° Efficiency 89 % Peak intensity 2.3 cd/lm LEDs/each optic 1 Light colour Far Red Required components:</p>	