



CPGS-9120-M12-C

3U CompactPCI EN50155 12-port managed Gigabit Ethernet switch with 8x10/100/1000Base-T(X)
in CompactPCI sockets, and 4x10/100/1000Base-T(X) in M12 connector

Features

- Leading EN50155 compliant Ethernet switch for rolling stock application
- Supports 3U and 8HP CompactPCI form factor and hot swapping
- PICMG 2.0 specification compatible
- Support 8x10/100/1000Base-T(X) ports on CompactPCI sockets and 4x10/100/1000Base-T(X) M12 connector ports
- Support Jumbo frame up to 9.6K Bytes
- Supports **O-Ring** (recovery time < 30ms over 250 units of connection), MSTP/RSTP/STP (IEEE 802.1s/w/D) for Ethernet Redundancy
- **Open-Ring** support the other vendor's ring technology in open architecture
- **O-Chain** allow multiple redundant network rings
- Support standard IEC 62439-2 **MRP** (Media Redundancy Protocol) function
- Supports IPV6 new internet protocol version
- Support Modbus TCP protocol
- Support IEEE 802.3az **Energy-Efficient Ethernet** technology
- Provided HTTPS/SSH protocol to enhance network security
- Supports SMTP client
- Supports IP-based bandwidth management
- Supports application-based QoS management
- Supports Device Binding security function
- Supports DOS/DDOS auto prevention
- Supports SSH/Https security function
- IGMP v2/v3 (IGMP snooping support) for filtering multicast traffic
- Supports SNMP v1/v2c/v3, RMON and 802.1Q VLAN Network Management
- Support ACL, TACACS+ and 802.1x User Authentication for security
- M12 connectors to guarantee reliable operation against environmental disturbances
- Multiple notification for warning of unexpected event
- Windows utility (**Open-Vision**) support centralized management and configurable by Web-based interface, Telnet and Console (CLI)
- Support LLDP Protocol
- Support hot-swappable technology

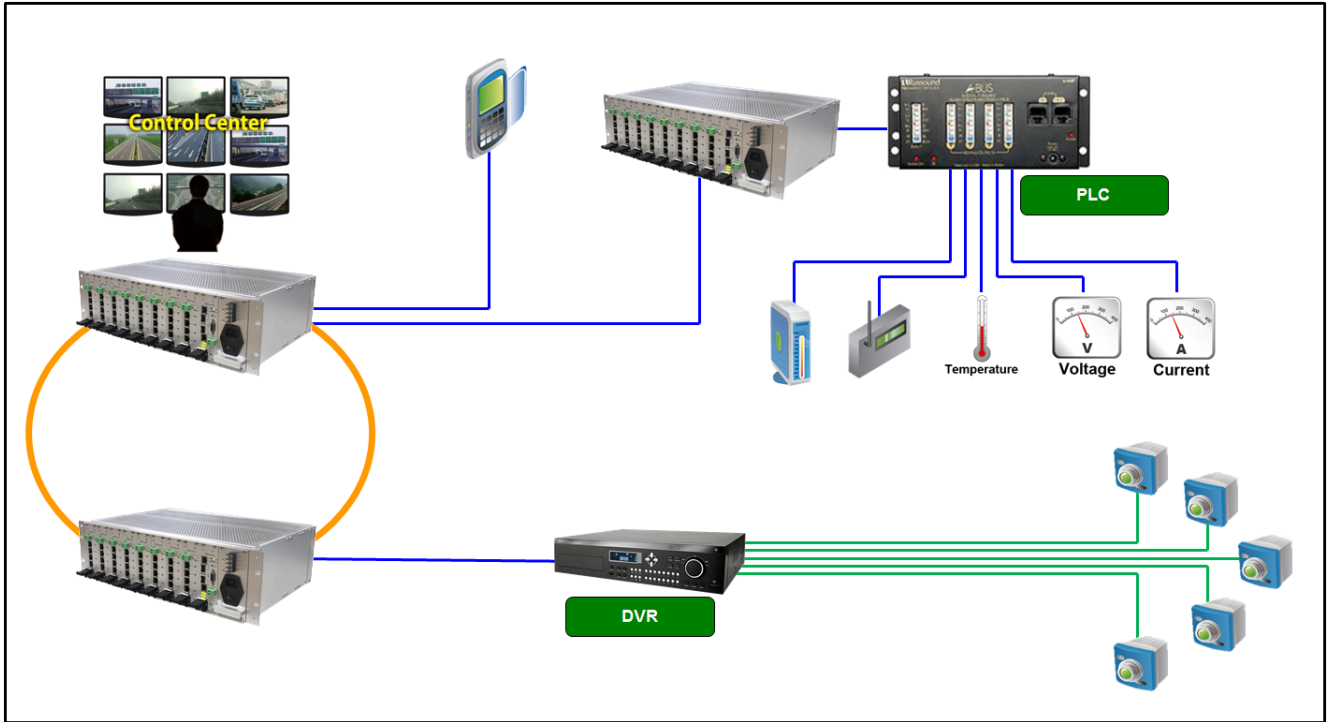


Introduction

ORing's CompactPCI series Ethernet switches are designed for industrial applications, such as factory automation, vehicle, and railway applications. CPGS-9120-M12-C is CompactPCI managed redundant ring Ethernet switch with 8x10/100/1000Base-T(X) ports in CompactPCI socket and 4x10/100/1000Base-T(X) M12 connector which is specifically designed for the toughest and fully compliant with EN50155 requirement. The switch support Ethernet Redundancy

protocol, **O-Ring** (recovery time < 30ms over 250 units of connection) and MSTP (RSTP/STP compatible) can protect your mission-critical applications from network interruptions or temporary malfunctions with its fast recovery technology. CPGS-9120-M12-C Ethernet switch provided 4-port M12 connectors to ensure tight, robust connections, and guarantee reliable operation against environmental disturbances, such as vibration and shock. CPGS-9120-M12-C supports wide operating temperature from -40°C to 70°C which can fulfill most of the requirement of operation environment. Except the Web-based interface, Telnet and console (CLI) configuration, CPGS-9120-M12-C can also be managed centralized and conveniently by Open-Vision. Therefore, the switch is one of the most reliable choices for rolling stock and highly-managed Ethernet application.

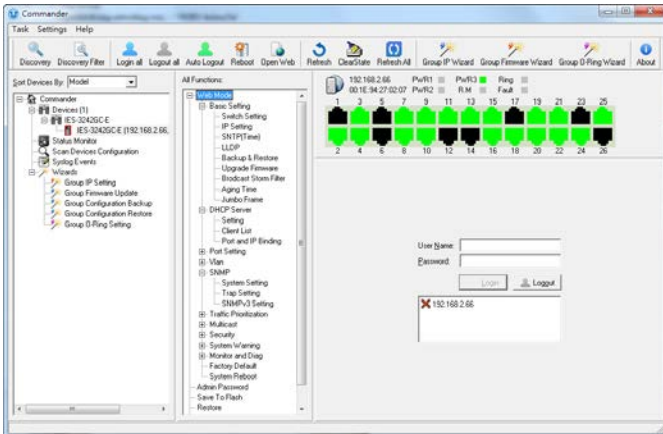
- **O-Ring :** O-Ring is ORing's proprietary redundant ring technology, with recovery time of less 30 milliseconds and up to 250 nodes. The O-Ring redundant ring technology can protect mission-critical application from network interruptions or temporary malfunction with its fast recover technology.
- **Open-Ring :** Open-Ring is an enhanced redundant technology that makes ORing's switches compatible with other vendor's proprietary redundant ring technologies. It enables ORing's switches to form a single ring with other vendor's switch. In cases where the ring is setup using proprietary technology, ORing offers a compatibility service where ORing can make its switches compatible with your particular network requirements.
- **O-Chain :** O-Chain is the revolutionary network redundancy technology that provides the add-on network redundancy topology for any backbone network, O-Chain allows multiple redundant network rings of different redundancy protocols to join and function together as a larger and more robust compound network topology. O-Chain providing ease-of-use while maximizing fault-recovery swiftness, flexibility, compatibility, and cost-effectiveness in one set of network redundancy topology.
- **MRP : Media Redundancy Protocol (MRP)** is a data network protocol standardized by the IEC 62439-2. It allows rings of Ethernet switches to overcome any single failure with recovery time much faster than achievable with Spanning Tree Protocol.
- **IP-based Bandwidth Management :** The switch provide advanced IP-based bandwidth management which can limit the maximum bandwidth for each IP device. User can configure IP camera and NVR with more bandwidth and limit other device bandwidth.
- **Application-Based QoS :** The switch also support application-based QoS. Application-based QoS can set highest priority for data stream according to TCP/UDP port number.
- **Device Binding Function :** ORing special Device Binding function can only permit allowed IP address with MAC address to access the network. Hacker cannot access the IP surveillance network without permission. It can avoid hacker from stealing video privacy data and attacking IP camera, NVR and controllers.
- **Advanced DOS/DDOS Auto Prevention :** The switch also provided advanced DOS/DDOS auto prevention. If there is any IP flow become big in short time, the switch will lock the source IP address for certain time to prevent the attack. It's hardware based prevention so it can prevent DOS/DDOS attack immediately and completely.
- **Modbus TCP :** This is a Modbus variant used for communications over TCP/IP networks.
- **IEEE 802.3az Energy-Efficient Ethernet :** This is a set of enhancements to the twisted-pair and backplane Ethernet family of networking standards that will allow for less power consumption during periods of low data activity. The intention was to reduce power consumption by 50% or more.



Network connection

Open-Vision

ORing's switches are intelligent switches. Different from other traditional redundant switches, ORing provides a set of Windows utility (Open-Vision) for user to manage and monitor all of industrial Ethernet switches on the industrial network.

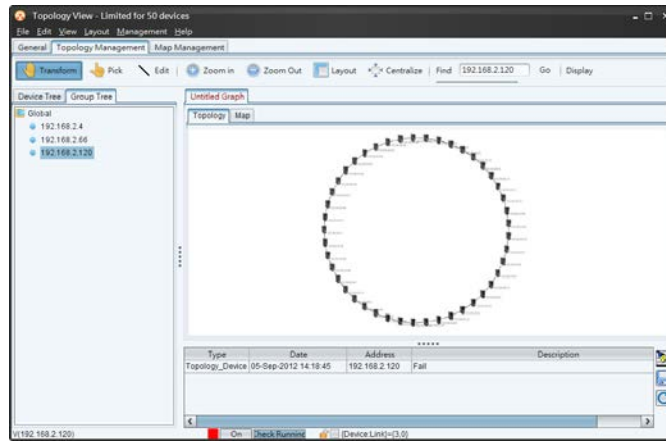


Commander

The screenshot shows the 'Host Monitor' software interface. It displays a table of monitored hosts with the following columns: Status, Name, Description, Success Times, Failure Times, Reference, and Last Test Time. The table lists 26 hosts with their respective IP addresses and monitoring data.

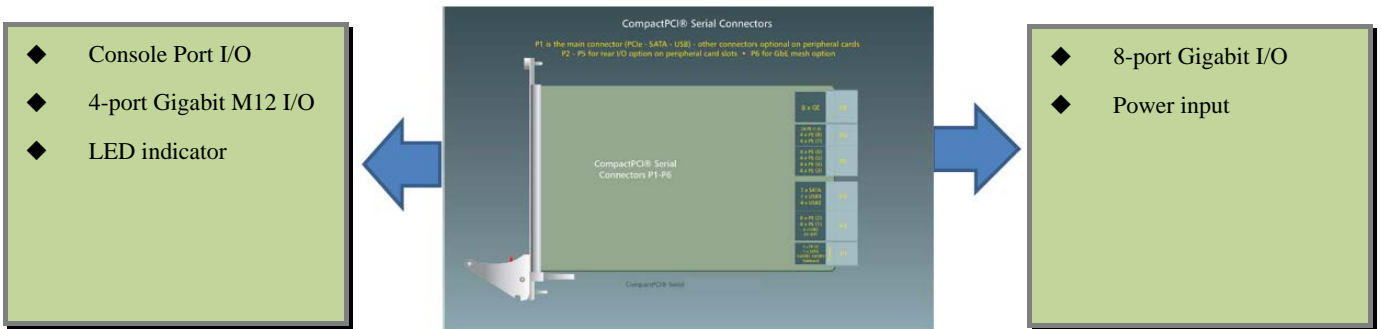
Status	Name	Description	Success Times	Failure Times	Reference	Last Test Time
Green	192.168.2.1		2	0	1	2012/09/05 14:30:09
Green	192.168.2.2		0	2	1	2012/09/05 14:30:09
Green	192.168.2.3		0	2	1	2012/09/05 14:30:09
Green	192.168.2.4		2	0	1	2012/09/05 14:30:09
Green	192.168.2.5		0	2	1	2012/09/05 14:30:13
Green	192.168.2.6		2	0	1	2012/09/05 14:30:13
Green	192.168.2.7		2	0	1	2012/09/05 14:30:13
Green	192.168.2.8		0	2	1	2012/09/05 14:30:14
Green	192.168.2.9		0	2	1	2012/09/05 14:30:14
Green	192.168.2.10		2	0	1	2012/09/05 14:30:14
Green	192.168.2.11		0	2	1	2012/09/05 14:30:14
Green	192.168.2.12		2	0	1	2012/09/05 14:30:14
Green	192.168.2.13		0	2	1	2012/09/05 14:30:18
Green	192.168.2.14		0	2	1	2012/09/05 14:30:18
Green	192.168.2.15		2	0	1	2012/09/05 14:30:18
Green	192.168.2.16		2	0	1	2012/09/05 14:30:19
Green	192.168.2.17		2	0	1	2012/09/05 14:30:19
Green	192.168.2.18		2	0	1	2012/09/05 14:30:19
Green	192.168.2.19		2	0	1	2012/09/05 14:30:19
Green	192.168.2.20		0	2	1	2012/09/05 14:30:20
Green	192.168.2.21		0	2	1	2012/09/05 14:30:24
Green	192.168.2.22		0	2	1	2012/09/05 14:30:24
Green	192.168.2.23		0	2	1	2012/09/05 14:30:24
Green	192.168.2.24		0	2	1	2012/09/05 14:30:24
Green	192.168.2.25		0	2	1	2012/09/05 14:30:24
Green	192.168.2.26		0	2	1	2012/09/05 14:30:24

Host Monitor



Topology View

I/O Functional

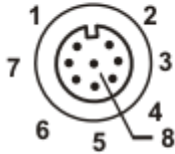


Console Port Pin Definition

PC (male) pin assignment	RS-232 with DB9 (female) pin assignment (RJ45 to DB9 cable)	RJ 45 pin assignment
Pin #2 RxD	Pin #2 TxD	Pin #2 TxD
Pin #3 TxD	Pin #3 RxD	Pin #3 RxD
Pin #5 GND	Pin #5 GND	Pin #5GND

M12/8P Pin Definition

● 10/100Base-T(X)



Pin No.	Description
#6	TD+
#4	TD-
#5	RD+
#8	RD-

● 1000Base-T

Pin No.	Description
#1	BI_DC+
#2	BI_DD+
#3	BI_DD-
#4	BI_DA-
#5	BI_DB+
#6	BI_DA+
#7	BI_DC-
#8	BI_DB-

Backplane Pin Definition

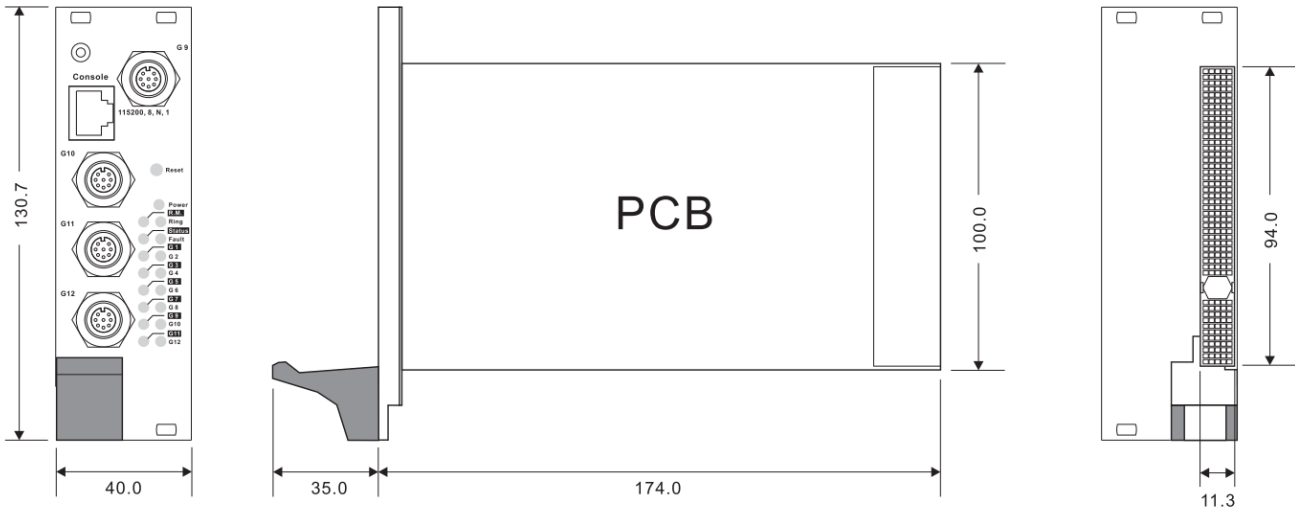
25	GND	5V			3.3V	5V	GND	
24	GND		5V				GND	
23	GND	3.3V			5V		GND	
22	GND		GND	3.3V			GND	
21	GND	3.3V			GND		GND	
20	GND		GND				GND	
19	GND	3.3V			GND		GND	
18	GND		GND	3.3V			GND	
17	GND	3.3V			GND		GND	
16	GND		GND				GND	
15	GND	3.3V			GND		GND	
14	KEY AREA							J1
13								
12								
11	GND				GND		GND	
10	GND		GND	3.3V			GND	
9	GND				GND		GND	
8	GND		GND				GND	
7	GND				GND		GND	
6	GND		GND	3.3V			GND	
5	GND				GND		GND	
4	GND		HEALTHY#				GND	
3	GND				5V		GND	

2	GND		5V				GND
1	GND	5V				5V	GND
Pin	Z	A	B	C	D	E	F

22	GND		STxD	GND		SRxD	GND	J2
21	GND			GND			GND	
20	GND			GND			GND	
19	GND			GND			GND	
18	GND			GND			GND	
17	GND			GND			GND	
16	GND			GND			GND	
15	GND			GND			GND	
14	GND			GND			GND	
13	GND			GND			GND	
12	GND			GND			GND	
11	GND			GND			GND	
10	GND			GND			GND	
9	GND			GND			GND	
8	GND			GND			GND	
7	GND			GND			GND	
6	GND			GND			GND	
5	GND			GND			GND	
4	GND			GND			GND	
3	GND			GND			GND	
2	GND			GND			GND	
1	GND			GND			GND	
Pin	Z	A	B	C	D	E	F	

Dimension

Dimension (Unit =mm)



Specifications

ORing Switch Model	CPGS-9120-M12-C
Physical Ports	
10/100/1000Base-T(X) Ports Auto MDI/MDIX	12-port (8-port with CompactPCI interface, 4-port with M12 A-coding connector) (PICMG 2.0 compatible)
Technology	
Ethernet Standards	IEEE 802.3 for 10Base-T IEEE 802.3u for 100Base-TX IEEE 802.3ab for 1000Base-T IEEE 802.3x for Flow control IEEE 802.3ad for LACP (Link Aggregation Control Protocol) IEEE 802.1D for STP (Spanning Tree Protocol) IEEE 802.1p for COS (Class of Service) IEEE 802.1Q for VLAN Tagging IEEE 802.1w for RSTP (Rapid Spanning Tree Protocol) IEEE 802.1s for MSTP (Multiple Spanning Tree Protocol) IEEE 802.1x for Authentication IEEE 802.1AB for LLDP (Link Layer Discovery Protocol)
MAC Table	8k
Priority Queues	8
Processing	Store-and-Forward
Switch Properties	Switching latency: 7 us Switching bandwidth: 24Gbps Max. Number of Available VLANs: 4096 IGMP multicast groups: 128 for each VLAN Port rate limiting: User Define
Jumbo frame	Up to 9.6K Bytes
Security Features	Device Binding security feature Enable/disable ports, MAC based port security Port based network access control (802.1x) VLAN (802.1Q) to segregate and secure network traffic Radius centralized password management

	SNMPv3 encrypted authentication and access security Https / SSH enhance network security
Software Features	STP/RSTP/MSTP (IEEE 802.1D/w/s) Redundant Ring (O-Ring) with recovery time less than 30ms over 250 units TOS/Diffserv supported Quality of Service (802.1p) for real-time traffic VLAN (802.1Q) with VLAN tagging IGMP Snooping IP-based bandwidth management Application-based QoS management DOS/DDOS auto prevention Port configuration, status, statistics, monitoring, security DHCP Server/Client/Relay SMTP Client Modbus TCP
Network Redundancy	O-Ring Open-Ring O-Chain MRP MSTP (STP / RSTP compatible)
RS-232 Serial Console Port	RS-232 in RJ45 connector with console cable. 115200bps, 8, N, 1
LED Indicators	
Power indicator (Power)	Green : Power LED x 1
Status Indicator (STA)	Green : Ethernet status indicator
R.M. indicator (R.M)	Green : indicate system operated in O-Ring Master mode
Ring indicator (Ring)	Green : indicate system operated in O-Ring mode
Fault indicator (Fault)	Amber : Indicate unexpected event occurred
10/100/1000Base-T(X) port indicator	Green for port Link/Act.
Power	
Power Input	CompactPCI bus powered (5VDC)
Power Consumption (Typ.)	7.5 Watts
Overload Current Protection	Present
Physical Characteristic	
Dimension (W x D x H)	40 (W) x 209 (D) x 130.7 (H)mm (1.58 x 8.23 x 5.15 inch)
Weight (g)	340 g
Environmental	
Storage Temperature	-40 to 85°C (-40 to 185°F)
Operating Temperature	-40 to 70°C (-40 to 158°F)
Operating Humidity	5% to 95% Non-condensing
Regulatory approvals	
EMI	FCC Part 15, CISPR (EN55022) class A, EN50155 (EN50121-3-2, EN55011, EN50121-4)
EMS	EN61000-4-2 (ESD), EN61000-4-3 (RS), EN61000-4-4 (EFT), EN61000-4-5 (Surge), EN61000-4-6 (CS), EN61000-4-8, EN61000-4-11
Shock	IEC60068-2-27
Free Fall	IEC60068-2-32
Vibration	IEC60068-2-6
Safety	EN60950-1
Warranty	5 years