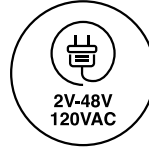
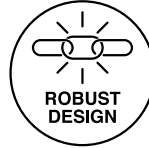


# CRLB Series Ø.319 (8.10mm) Watertight LED Indicator, Long Body and IP67 Sealed



Long-body robust LED metal indicator with recessed bezel which fit thick panels, especially designed for extreme, hard and outdoor environments

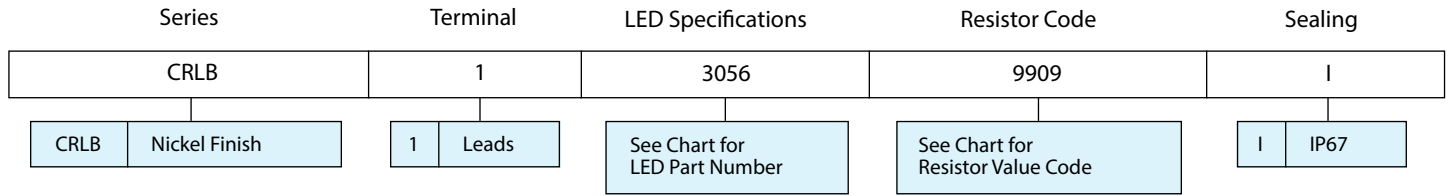


## Applications

- Industrial
- People Movers
- Automation and Control
- Safety and Emergency
- Pilot Instrumentation
- Status Maintenance
- Warning Indication
- Aircraft/Military Instrumentation
- Maritime, Oil and Gas Industry

## Key Features

# Ordering Data



Example:  
**CRLB-1-3056-9909-I**  
 CRLB Nickel Finish, Wire Leads, Red LED 12 Volt, IP67

## LED Specification Chart

Electrical and Optical Characteristics (TA = 25°C)

LED Part Numbers	Color	Luminous Intensity (mcd) Typ. @ IF (mA)	VF Typ. @ IF (mA)	Viewing Angle (2θ <sup>1/2</sup> )	Peak Wavelength (nm)
------------------	-------	---	-------------------	------------------------------------	----------------------

### SINGLE COLOR

3056	Red	400.0	20	1.9	20	30°	660
3055	Yellow	400.0	20	2.0	20	30°	590
3054	Green	300.0	20	3.2	20	30°	520
3060	Orange	600.0	20	2.1	20	30°	610

### SUPER ULTRA BRIGHT

3036	Red	2800.0	20	1.85	20	20°	660
3047	Green	13990	20	3.3	20	20°	515
3048	Amber	1300.0	20	2.02	20	30°	592
3057	Blue	640.0	20	3.3	20	20°	468
3061	White	27000.0	20	3.2	20	15°	N/A

## Resistor Chart

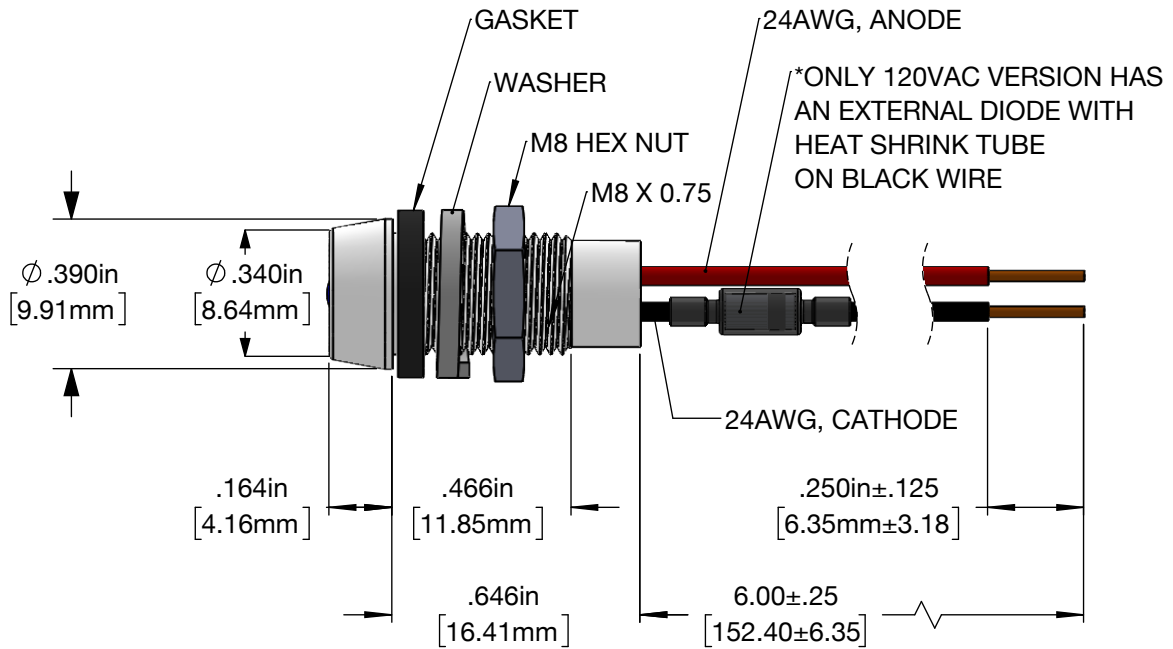
Operating Specification

Resistor Value Code	Voltage	Current (mA)	Resistor Value (Ohms) Green, Yellow Red, Bicolor LED	Resistor Value (Ohms) Blue, White LED
---------------------	---------	--------------	--	---------------------------------------

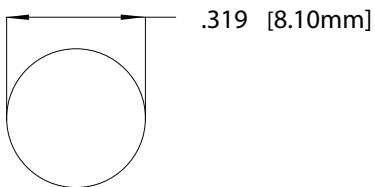
0000	2	20	None	Not Available
9907	5	20	150	
9922	5	20		65
9908	12	20	511	
9909	12	20		357
9910	24	20	1100	
9911	24	20		953
9923	28	20	1500	
9933	28	20		1300
9912	48	9	4870	
9913	48	9		4530
9920	120VAC	8	6490	Contact VCC

## Product Dimensions

### CRLB Series



### Recommended Mounting Hole



### Notes:

1. All dimensions are in inches [millimeters]
2. Tolerance is  $+.004/-0.000$  [ $+0.10/-0.00$ ] unless otherwise noted.
3. The specifications, characteristics and technical data described in the datasheet are subject to change without prior notice.