

DAHIA-TL110

~120° wide beam

TECHNICAL SPECIFICATIONS:

Dimensions	321.0 x 80.5 mm
Height	11 mm
Fastening	screw
Ingress protection classes	IP67
ROHS compliant	yes ⓘ

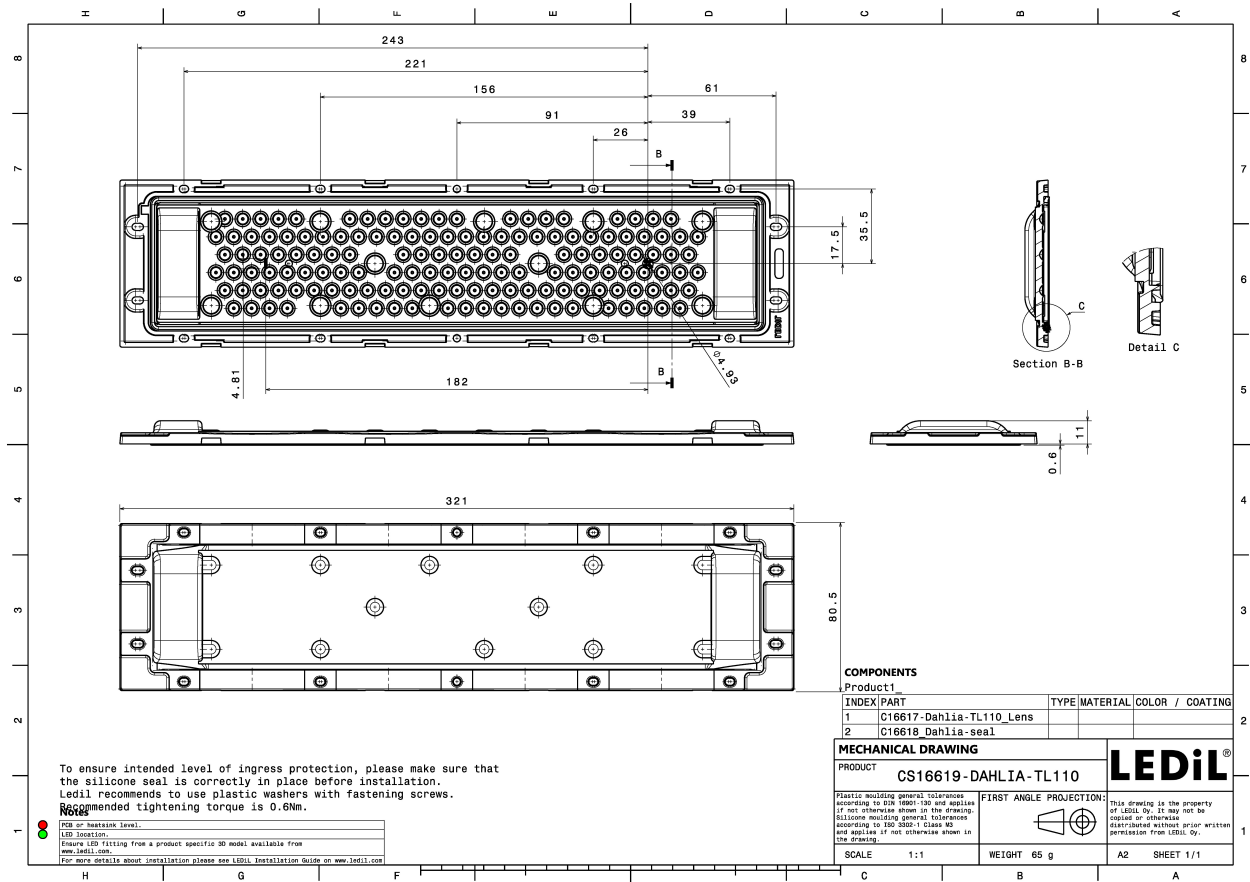
MATERIAL SPECIFICATIONS:

Component	Type	Material	Colour	Finish
DAHIA-TL110	Linear lens	PMMA	clear	
DAHIA-TL-SEAL	Seal	Silicone		

ORDERING INFORMATION:

Component		Qty in box	MOQ	MPQ	Box weight (kg)
CS16619_DAHIA-TL110	Linear lens	80	80	4	7.7
» Box size: 343 x 343 x 298 mm					



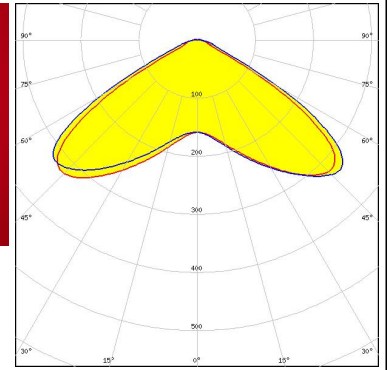


See also our general installation guide: www.ledil.com/installation_guide

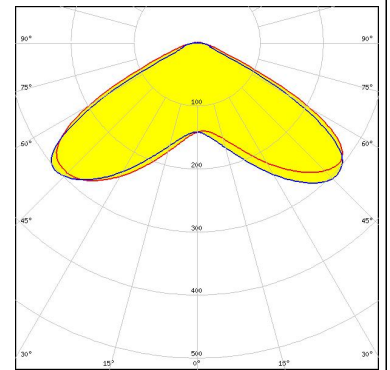
PHOTOMETRIC DATA (MEASURED):



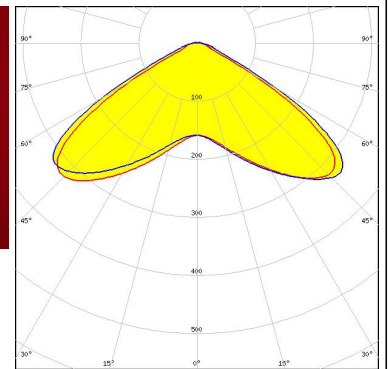
LED L0-278053-RRRR-C1000-K237
 FWHM / FWTM 122.0° / 142.0°
 Efficiency 94 %
 Peak intensity 0.3 cd/lm
 LEDs/each optic 1
 Light colour Red
 Required components:



LED SST-10-B130
 FWHM / FWTM 123.0° / 140.0°
 Efficiency 93 %
 Peak intensity 0.3 cd/lm
 LEDs/each optic 1
 Light colour Deep Red
 Required components:



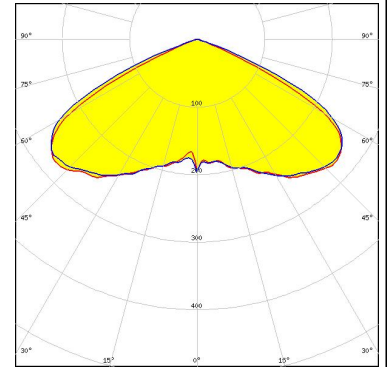
OSRAM Opto Semiconductors
 LED OSLON Square CSSRM2/CSSRM3
 FWHM / FWTM 122.0° / 142.0°
 Efficiency 94 %
 Peak intensity 0.3 cd/lm
 LEDs/each optic 1
 Light colour Hyper Red
 Required components:



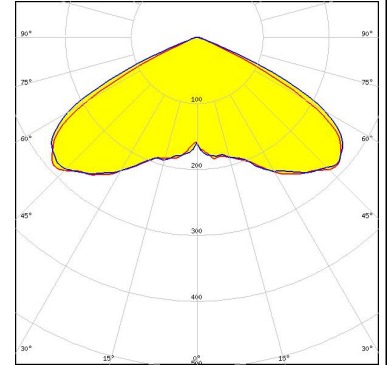
PHOTOMETRIC DATA (SIMULATED):



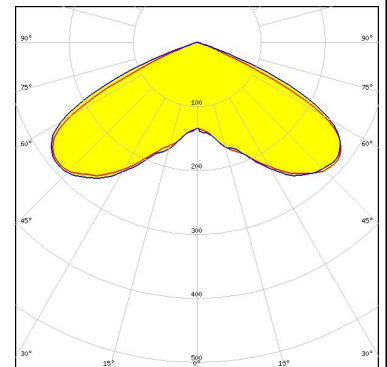
LED J Series 2835
 FWHM / FWTM 129.0° / 140.0°
 Efficiency 92 %
 Peak intensity 0.3 cd/lm
 LEDs/each optic 1
 Light colour White
 Required components:



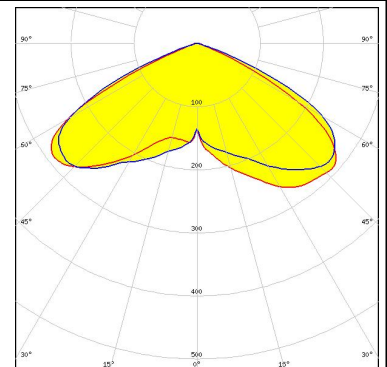
LED J Series 3030
 FWHM / FWTM 126.0° / 138.0°
 Efficiency 91 %
 Peak intensity 0.3 cd/lm
 LEDs/each optic 1
 Light colour White
 Required components:



LED LUXEON 2835 Line
 FWHM / FWTM 118.0° / 133.0°
 Efficiency 93 %
 Peak intensity 0.3 cd/lm
 LEDs/each optic 1
 Light colour White
 Required components:



LED NF2x757G
 FWHM / FWTM 127.0° / 140.0°
 Efficiency 92 %
 Peak intensity 0.3 cd/lm
 LEDs/each optic 1
 Light colour White
 Required components:



PHOTOMETRIC DATA (SIMULATED):

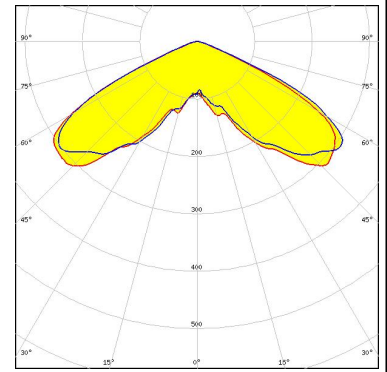
<p>NICHIA</p> <p>LED NFSx757G FWHM / FWTM 127.0° / 140.0° Efficiency 93 % Peak intensity 0.3 cd/lm LEDs/each optic 1 Light colour White Required components:</p>	
<p>NICHIA</p> <p>LED NVSxx19B/NVSxx19C FWHM / FWTM 132.0° / 144.0° Efficiency 93 % Peak intensity 0.3 cd/lm LEDs/each optic 1 Light colour White Required components:</p>	
<p>OSRAM <small>Opto Semiconductors</small></p> <p>LED Duris S5 (Single chip) FWHM / FWTM 128.0° / 141.0° Efficiency 94 % Peak intensity 0.3 cd/lm LEDs/each optic 1 Light colour White Required components:</p>	
<p>OSRAM <small>Opto Semiconductors</small></p> <p>LED OSCONIQ P 3030 FWHM / FWTM 129.0° / 142.0° Efficiency 93 % Peak intensity 0.3 cd/lm LEDs/each optic 1 Light colour White Required components:</p>	

PHOTOMETRIC DATA (SIMULATED):

OSRAM

Opto Semiconductors

LED OSCONIQ P 3030
 FWHM / FWTM 128.0° / 142.0°
 Efficiency 94 %
 Peak intensity 0.3 cd/lm
 LEDs/each optic 1
 Light colour Hyper Red
 Required components:



OSRAM

Opto Semiconductors

LED OSLON SSL 120
 FWHM / FWTM 128.0° / 137.0°
 Efficiency 94 %
 Peak intensity 0.3 cd/lm
 LEDs/each optic 1
 Light colour Blue
 Required components:

OSRAM

Opto Semiconductors

LED OSLON SSL 120
 FWHM / FWTM 127.0° / 137.0°
 Efficiency 95 %
 Peak intensity 0.3 cd/lm
 LEDs/each optic 1
 Light colour Red
 Required components:

OSRAM

Opto Semiconductors

LED OSLON SSL 120
 FWHM / FWTM 127.0° / 135.0°
 Efficiency 95 %
 Peak intensity 0.4 cd/lm
 LEDs/each optic 1
 Light colour Red
 Required components:

PHOTOMETRIC DATA (SIMULATED):

OSRAM

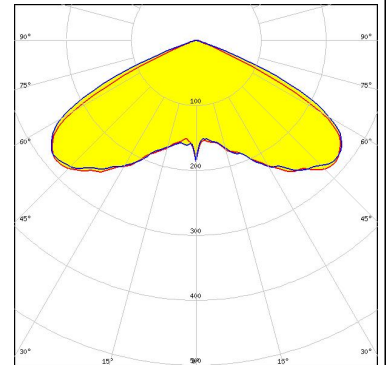
Opto Semiconductors

LED OSLON SSL 150
 FWHM / FWTM 137.0° / 146.0°
 Efficiency 94 %
 Peak intensity 0.3 cd/lm
 LEDs/each optic 1
 Light colour White
 Required components:



SEOUL SEMICONDUCTOR

LED SEOUL DC 3030
 FWHM / FWTM 129.0° / 140.0°
 Efficiency 92 %
 Peak intensity 0.3 cd/lm
 LEDs/each optic 1
 Light colour White
 Required components:



SEOUL SEMICONDUCTOR

LED Z5M
 FWHM / FWTM 134.0° / 146.0°
 Efficiency 92 %
 Peak intensity 0.3 cd/lm
 LEDs/each optic 1
 Light colour White
 Required components:

