

HB-IP-2X6-M-PC

~25° medium beam. Variant made from PC.

SPECIFICATION:

Dimensions	173.0 x 71.4 mm
Height	11.4 mm
Fastening	pin, screw
Ingress protection classes	IP67
ROHS compliant	yes ⓘ

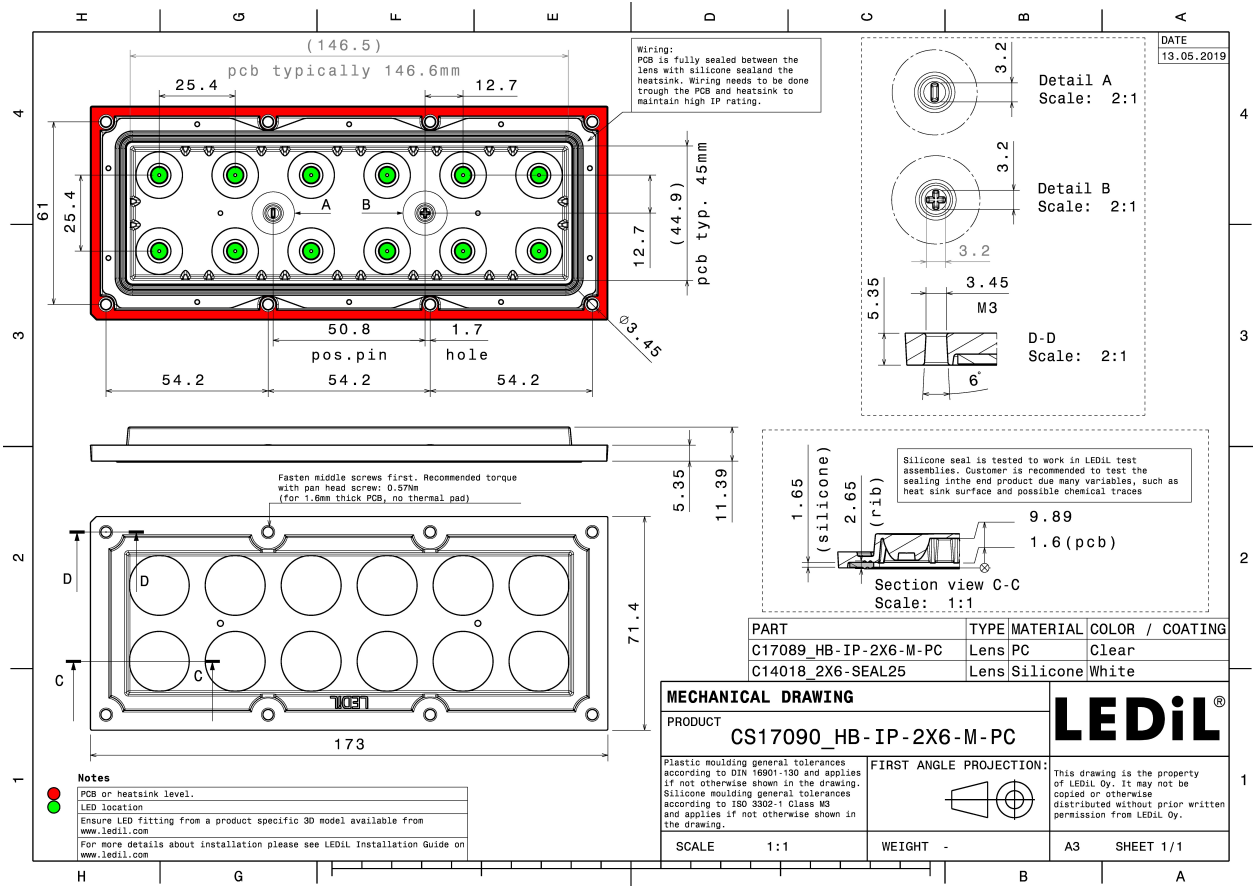
MATERIALS:

Component	Type	Material	Colour	Finish
HB-IP-2X6-M-PC	Multi-lens	PC	clear	
2X6-SEAL25	Seal	Silicone	white	

ORDERING INFORMATION:

Component	Type	Qty in box	MOQ	MPQ	Box weight (kg)
CS17090_HB-IP-2X6-M-PC » Box size: 476 x 273 x 247 mm	Multi-lens	120	40	40	8.3



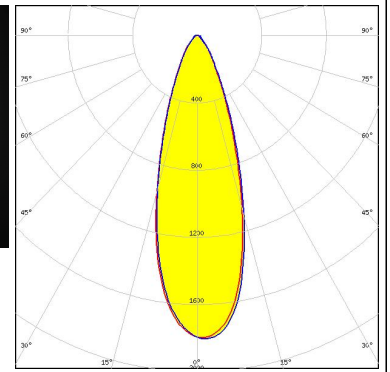


See also our general installation guide: www.ledil.com/installation_guide

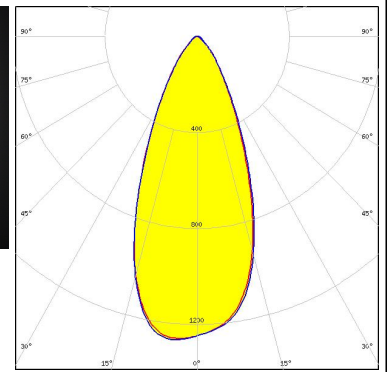
OPTICAL RESULTS (MEASURED):



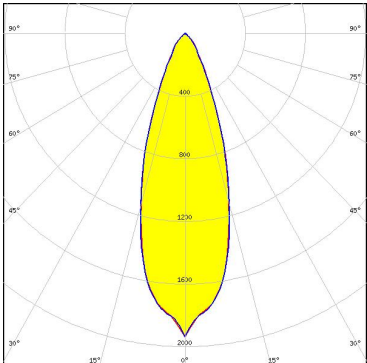
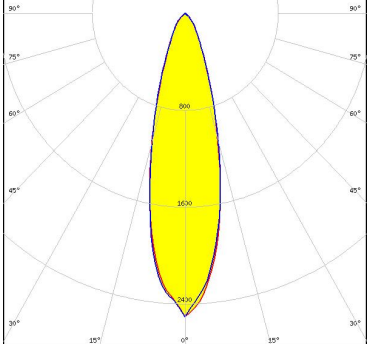
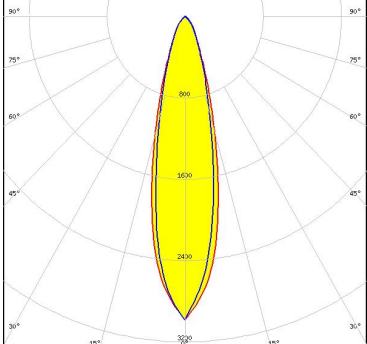
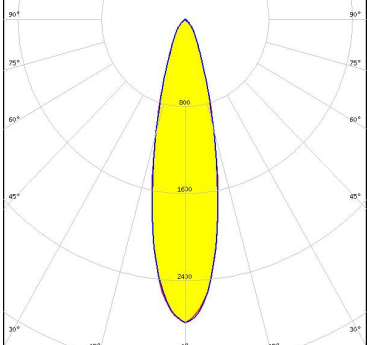
LED XP-G3
FWHM / FWTM 33.0° / 66.0°
Efficiency 86 %
Peak intensity 1.8 cd/lm
LEDs/each optic 1
Light colour White
Required components:



LED NVSW519A
FWHM / FWTM 44.0° / 81.0°
Efficiency 89 %
Peak intensity 1.3 cd/lm
LEDs/each optic 1
Light colour White
Required components:



OPTICAL RESULTS (SIMULATED):

<p>NICHIA</p> <p>LED: NV4WB35AM FWHM / FWTM: 34.0° / 64.0° Efficiency: 89 % Peak intensity: 1.9 cd/lm LEDs/each optic: 1 Light colour: White Required components:</p>	
<p>OSRAM</p> <p>LED: PrevaLED Brick HP IP 2x6 FWHM / FWTM: 28.0° / 58.0° Efficiency: 89 % Peak intensity: 2.5 cd/lm LEDs/each optic: 1 Light colour: White Required components:</p>	
<p>OSRAM <small>Opto Semiconductors</small></p> <p>LED: OSCONIQ P 3737 (2W version) FWHM / FWTM: 24.0° / 53.0° Efficiency: 89 % Peak intensity: 3 cd/lm LEDs/each optic: 1 Light colour: White Required components:</p>	
<p>OSRAM <small>Opto Semiconductors</small></p> <p>LED: OSOLON Square CSSRM2/CSSRM3 FWHM / FWTM: 26.0° / 54.0° Efficiency: 89 % Peak intensity: 2.8 cd/lm LEDs/each optic: 1 Light colour: White Required components:</p>	

OPTICAL RESULTS (SIMULATED):

