

HB-IP-2X6-G2-WWW-PC

~90° wide beam. Variant made from PC.

TECHNICAL SPECIFICATIONS:

Dimensions	172.0 x 71.0 mm
Height	8.2 mm
Fastening	pin, screw
Ingress protection classes	IP67
ROHS compliant	yes ⓘ

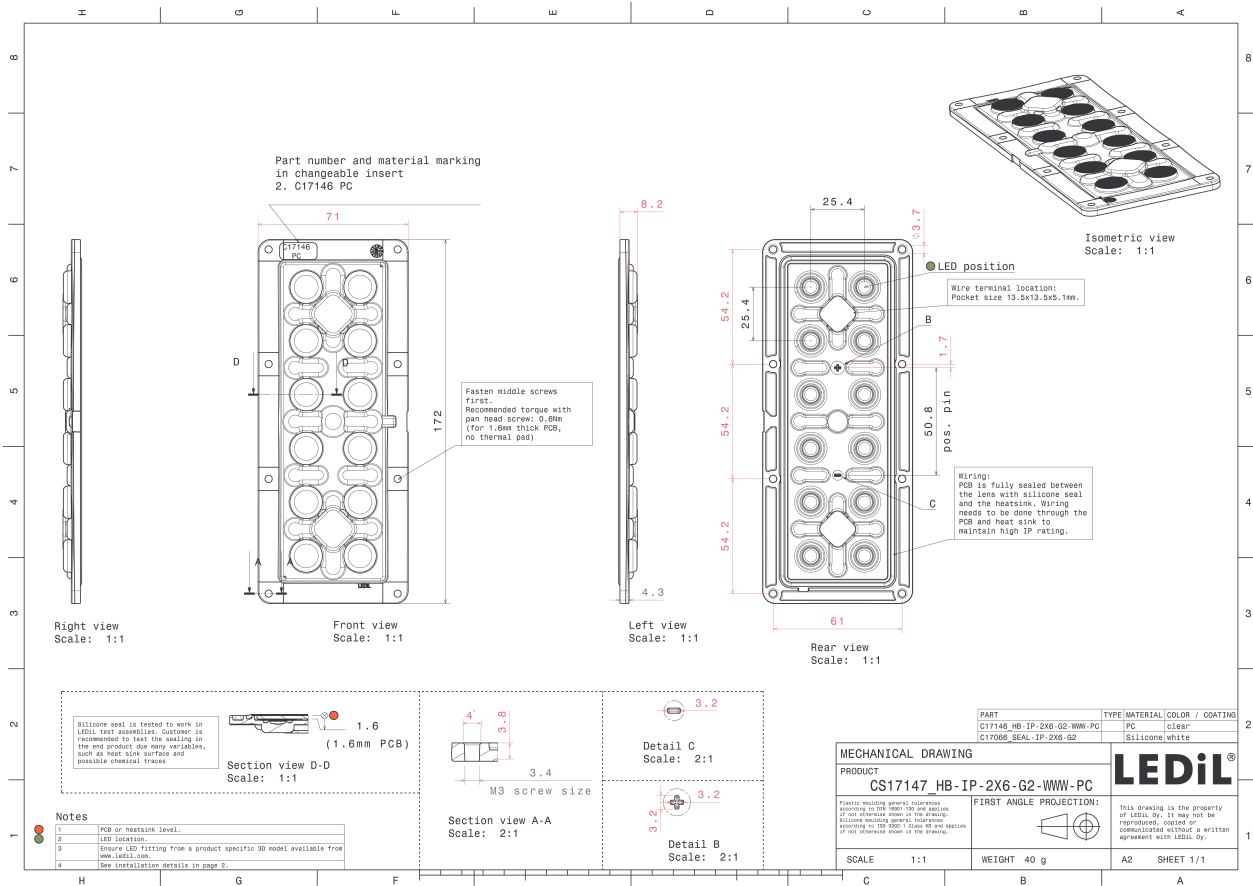
MATERIAL SPECIFICATIONS:

Component	Type	Material	Colour	Finish
HB-IP-2X6-G2-WWW-PC	Multi-lens	PC	clear	
SEAL-IP-2X6-G2	Seal	Silicone	white	

ORDERING INFORMATION:

Component	Type	Qty in box	MOQ	MPQ	Box weight (kg)
CS17147_HB-IP-2X6-G2-WWW-PC » Box size: 476 x 273 x 247 mm	Multi-lens	132	44	44	6.0



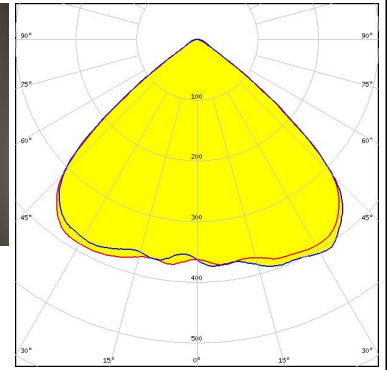


See also our general installation guide: www.ledil.com/installation_guide

PHOTOMETRIC DATA (MEASURED):

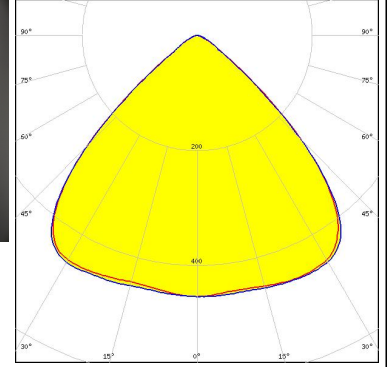


LED NVSW519A
FWHM / FWTM 100.0° / 116.0°
Efficiency 93 %
Peak intensity 0.4 cd/lm
LEDs/each optic 1
Light colour White
Required components:



SEOUL SEMICONDUCTOR

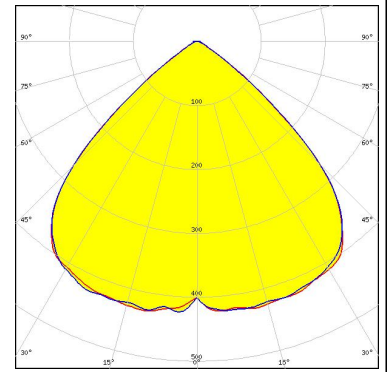
LED 2x6 5050 module - SMJD-3625012F-XX
FWHM / FWTM 93.0° / 113.0°
Efficiency 94 %
Peak intensity 0.5 cd/lm
LEDs/each optic 1
Light colour White
Required components:



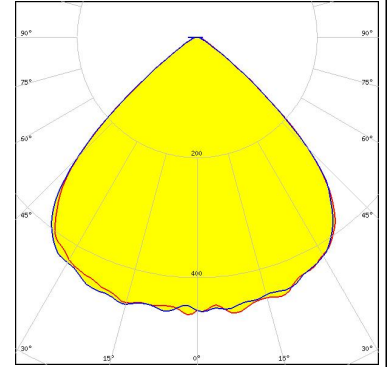
PHOTOMETRIC DATA (SIMULATED):



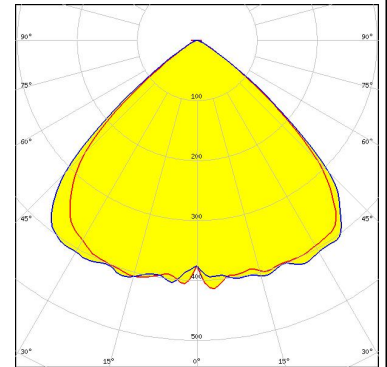
LED XP-G2 HE
 FWHM / FWTM 96.0° / 114.0°
 Efficiency 90 %
 Peak intensity 0.4 cd/lm
 LEDs/each optic 1
 Light colour White
 Required components:



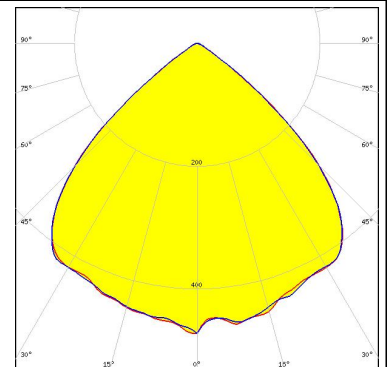
LED XP-G3
 FWHM / FWTM 93.0° / 113.0°
 Efficiency 92 %
 Peak intensity 0.5 cd/lm
 LEDs/each optic 1
 Light colour White
 Required components:



LED NF3W585AR
 FWHM / FWTM 97.0° / 115.0°
 Efficiency 90 %
 Peak intensity 0.4 cd/lm
 LEDs/each optic 1
 Light colour White
 Required components:



LED NV4WB35AM
 FWHM / FWTM 94.0° / 112.0°
 Efficiency 91 %
 Peak intensity 0.5 cd/lm
 LEDs/each optic 1
 Light colour White
 Required components:

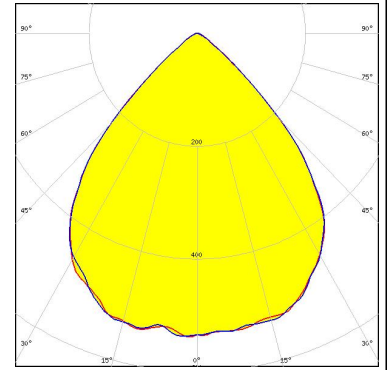


PHOTOMETRIC DATA (SIMULATED):

OSRAM

Opto Semiconductors

LED OSCONIQ P 3737 (2W version)
 FWHM / FWTM 86.0° / 108.0°
 Efficiency 91 %
 Peak intensity 0.6 cd/lm
 LEDs/each optic 1
 Light colour White
 Required components:



OSRAM

Opto Semiconductors

LED OSLON Square CSSRM2/CSSRM3
 FWHM / FWTM 90.0° / 108.0°
 Efficiency 91 %
 Peak intensity 0.5 cd/lm
 LEDs/each optic 1
 Light colour White
 Required components:

