

HB-IP-2X6-G2-W-PC

~60° wide beam. Variant made from PC.

TECHNICAL SPECIFICATIONS:

| | |
|----------------------------|-----------------|
| Dimensions | 172.0 x 71.0 mm |
| Height | 8.2 mm |
| Fastening | pin, screw |
| Ingress protection classes | IP67 |
| ROHS compliant | yes ⓘ |

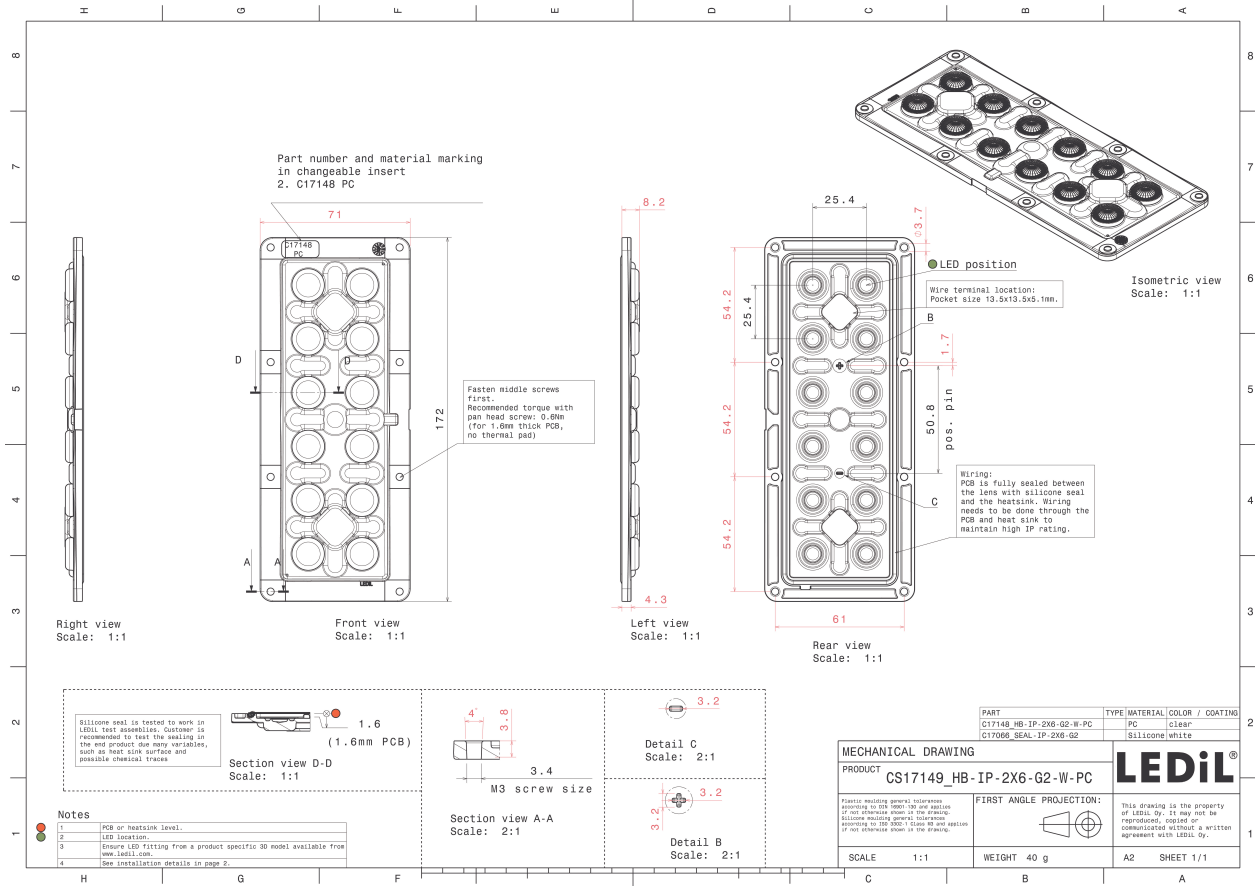
MATERIAL SPECIFICATIONS:

| Component | Type | Material | Colour | Finish |
|-------------------|------------|----------|--------|--------|
| HB-IP-2X6-G2-W-PC | Multi-lens | PC | clear | |
| SEAL-IP-2X6-G2 | Seal | Silicone | white | |



ORDERING INFORMATION:

| Component | Type | Qty in box | MOQ | MPQ | Box weight (kg) |
|---|------------|------------|-----|-----|-----------------|
| CS17149_HB-IP-2X6-G2-W-PC » Box size: 476 x 273 x 247 mm | Multi-lens | 132 | 44 | 44 | 6.2 |

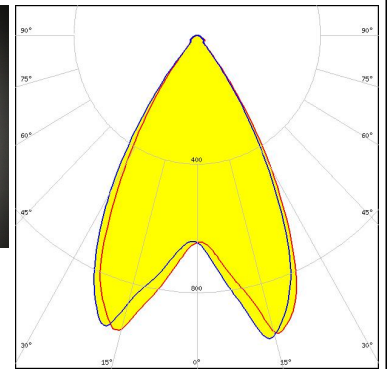
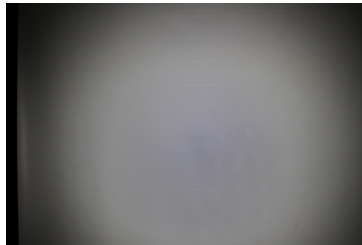


See also our general installation guide: www.ledil.com/installation_guide

PHOTOMETRIC DATA (MEASURED):



LED NVSW519A
FWHM / FWTM 60.0° / 78.0°
Efficiency 94 %
Peak intensity 1 cd/lm
LEDs/each optic 1
Light colour White
Required components:



LED Duris S8
FWHM / FWTM 62.0° / 81.0°
Efficiency 92 %
Peak intensity 0.9 cd/lm
LEDs/each optic 1
Light colour White
Required components:

