

STRADA-IP-24-T3-M-PC

IESNA Type III (medium) beam with excellent backlight control, illuminance uniformity and cutoff. Variant made from PC.

SPECIFICATION:

Dimensions	173.0 x 71.4 mm
Height	9 mm
Fastening	pin, screw
Ingress protection classes	IP66, IP67
ROHS compliant	yes ⓘ

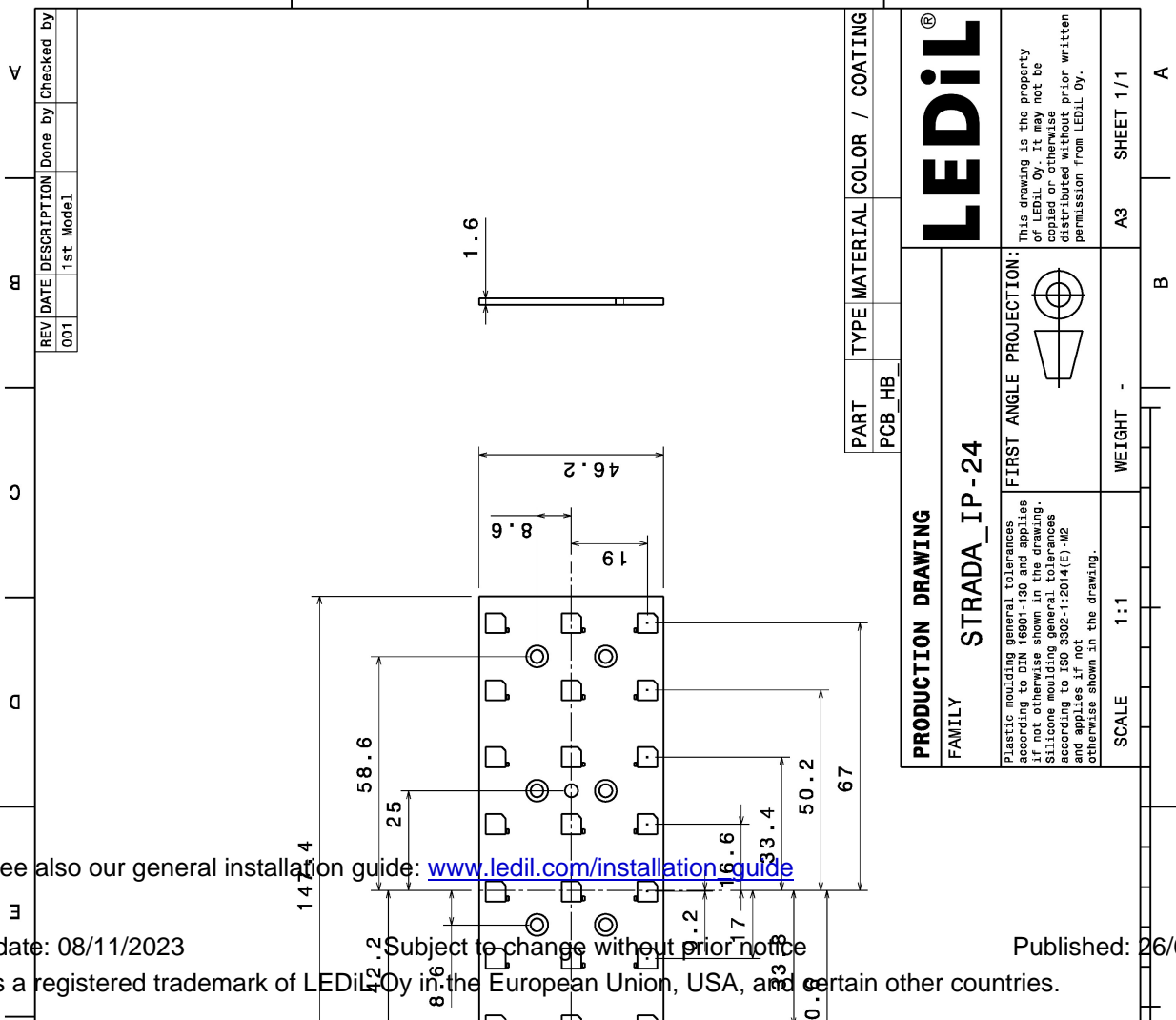
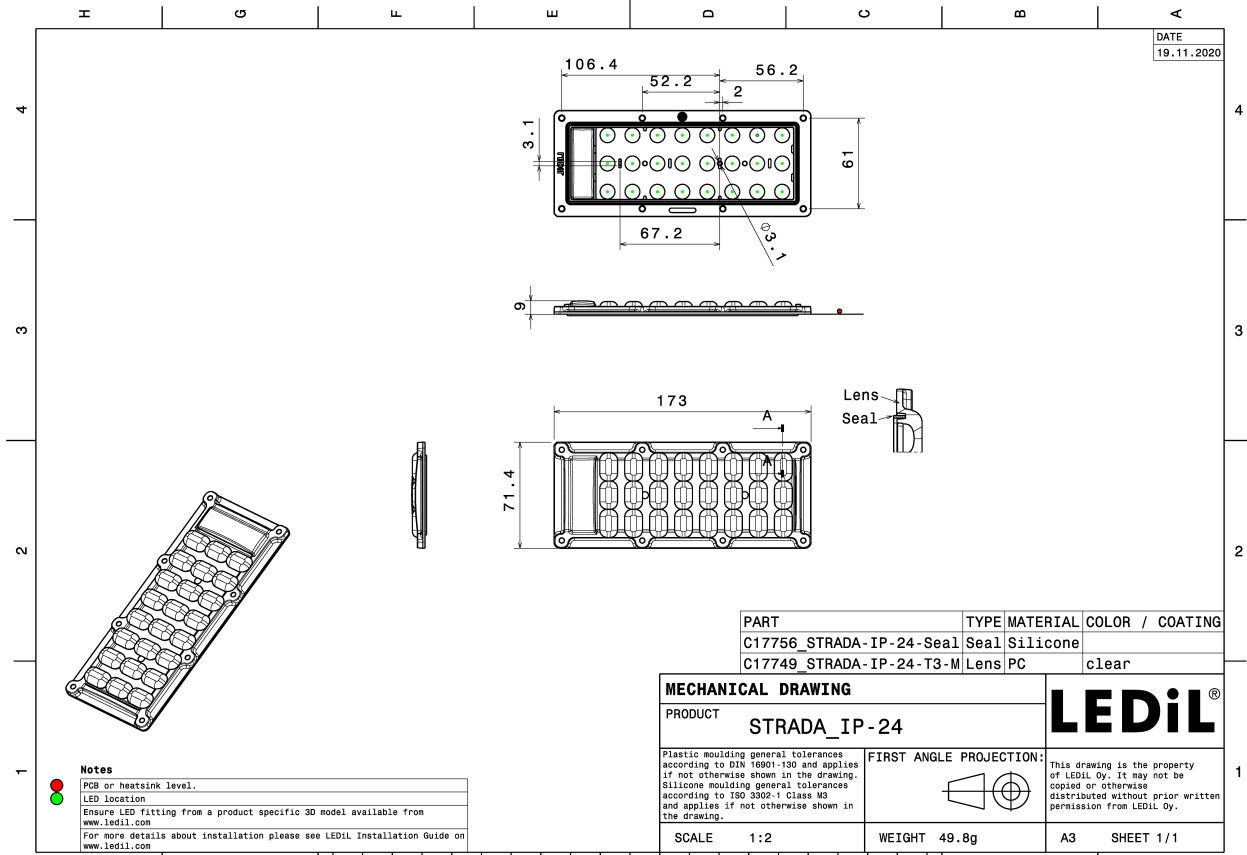


MATERIALS:

Component	Type	Material	Colour	Finish
STRADA-IP-24-T3-M-PC	Multi-lens	PC	clear	
STRADA-IP-24-SEAL	Seal	Silicone	white	

ORDERING INFORMATION:

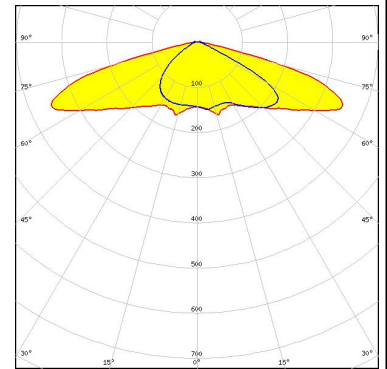
Component	Qty in box	MOQ	MPQ	Box weight (kg)
CS17758_STRADA-IP-24-T3-M-PC » Box size: 476 x 273 x 247 mm	120	120	40	7.0



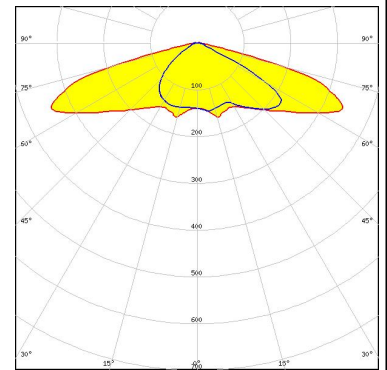
OPTICAL RESULTS (MEASURED):



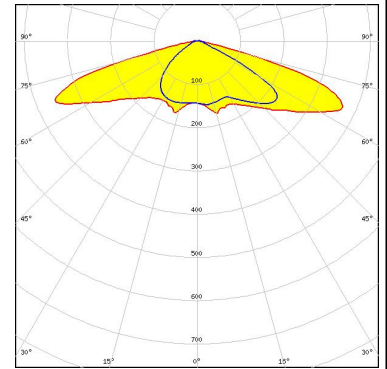
LED LIGHT ENGINE STRADA-IP 24 LEDs 147.4 x 46.2 x 1.5
 FWHM / FWTM Asymmetric
 Efficiency 84 %
 Peak intensity 0.5 cd/lm
 LEDs/each optic 1
 Light colour White
 Required components:



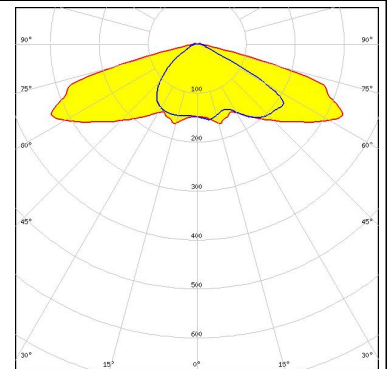
LED LUXEON 5050 Square LES
 FWHM / FWTM Asymmetric
 Efficiency 83 %
 Peak intensity 0.6 cd/lm
 LEDs/each optic 1
 Light colour White
 Required components:



LED LUXEON XR-5050 HE (L225-xxx024MLU010)
 FWHM / FWTM Asymmetric
 Efficiency 85 %
 Peak intensity 0.6 cd/lm
 LEDs/each optic 1
 Light colour White
 Required components:



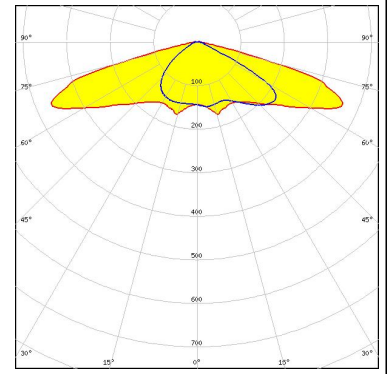
LED Duris S8
 FWHM / FWTM Asymmetric
 Efficiency 84 %
 Peak intensity 0.5 cd/lm
 LEDs/each optic 1
 Light colour White
 Required components:



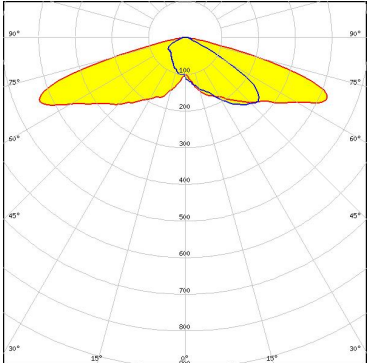
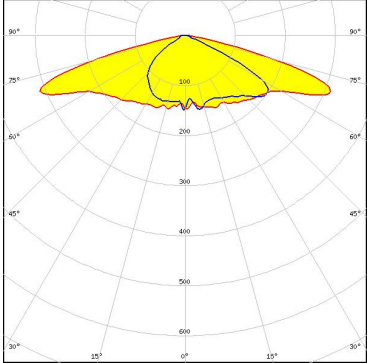
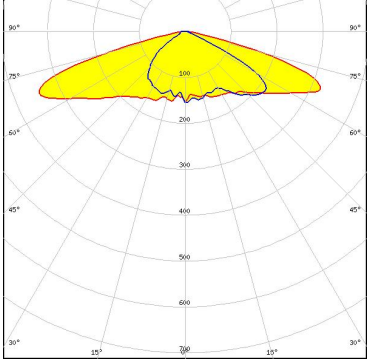
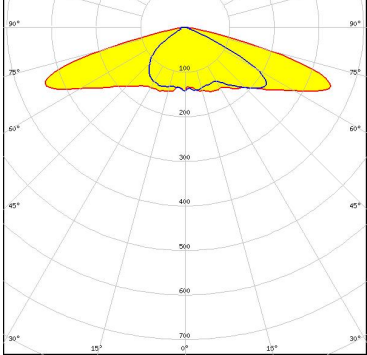
OPTICAL RESULTS (MEASURED):

SAMSUNG

LED	HiLOM RM24 ZP (LH502D)
FWHM / FWTM	Asymmetric
Efficiency	85 %
Peak intensity	0.6 cd/lm
LEDs/each optic	1
Light colour	White
Required components:	



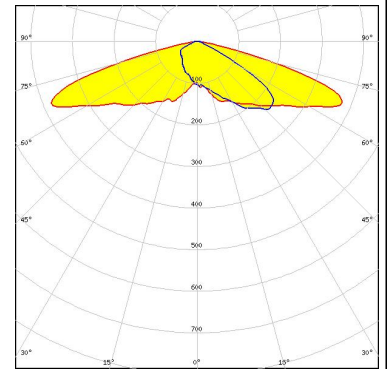
OPTICAL RESULTS (SIMULATED):

<p>bridgelux</p> <p>LED: Bridgelux SMD 5050 FWHM / FWTM: Asymmetric Efficiency: 88 % Peak intensity: 0.6 cd/lm LEDs/each optic: 1 Light colour: White Required components:</p>	
<p>CREE LEDs</p> <p>LED: J Series 5050B 30V K Class FWHM / FWTM: Asymmetric Efficiency: 76 % Peak intensity: 0.5 cd/lm LEDs/each optic: 1 Light colour: White Required components:</p>	
<p>CREE LEDs</p> <p>LED: J Series 5050B 6V K Class FWHM / FWTM: Asymmetric Efficiency: 81 % Peak intensity: 0.5 cd/lm LEDs/each optic: 1 Light colour: White Required components:</p>	
<p>CREE LEDs</p> <p>LED: J Series 5050C 6V E Class FWHM / FWTM: Asymmetric Efficiency: 81 % Peak intensity: 0.5 cd/lm LEDs/each optic: 1 Light colour: White Required components:</p>	

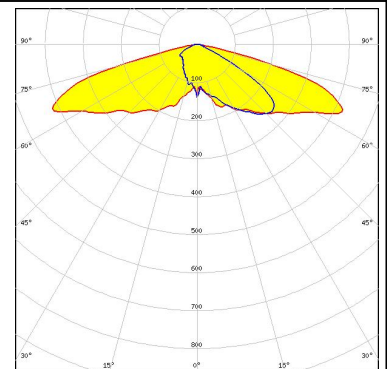
OPTICAL RESULTS (SIMULATED):



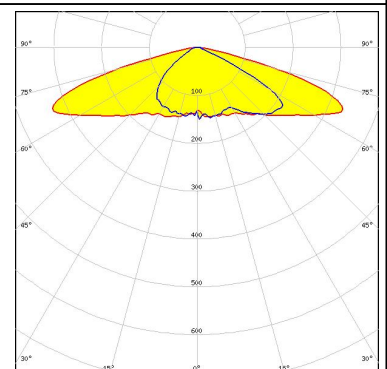
LED NFMW48xA
 FWHM / FWTM Asymmetric
 Efficiency 79 %
 Peak intensity 0.5 cd/lm
 LEDs/each optic 1
 Light colour White
 Required components:



LED OSCONIQ S 5050
 FWHM / FWTM Asymmetric
 Efficiency 89 %
 Peak intensity 0.6 cd/lm
 LEDs/each optic 1
 Light colour White
 Required components:



LED LH502C
 FWHM / FWTM Asymmetric
 Efficiency 82 %
 Peak intensity 0.5 cd/lm
 LEDs/each optic 1
 Light colour White
 Required components:



LED LH502D
 FWHM / FWTM Asymmetric
 Efficiency 81 %
 Peak intensity 0.5 cd/lm
 LEDs/each optic 1
 Light colour White
 Required components:

