

STRADA-IP-24-T4-B

Wide IESNA Type IV forward-throw beam for wide area lighting like car parks.

TECHNICAL SPECIFICATIONS:

Dimensions	173.0 x 71.4 mm
Height	9 mm
Fastening	pin, screw
Ingress protection classes	IP66, IP67
ROHS compliant	yes ⓘ

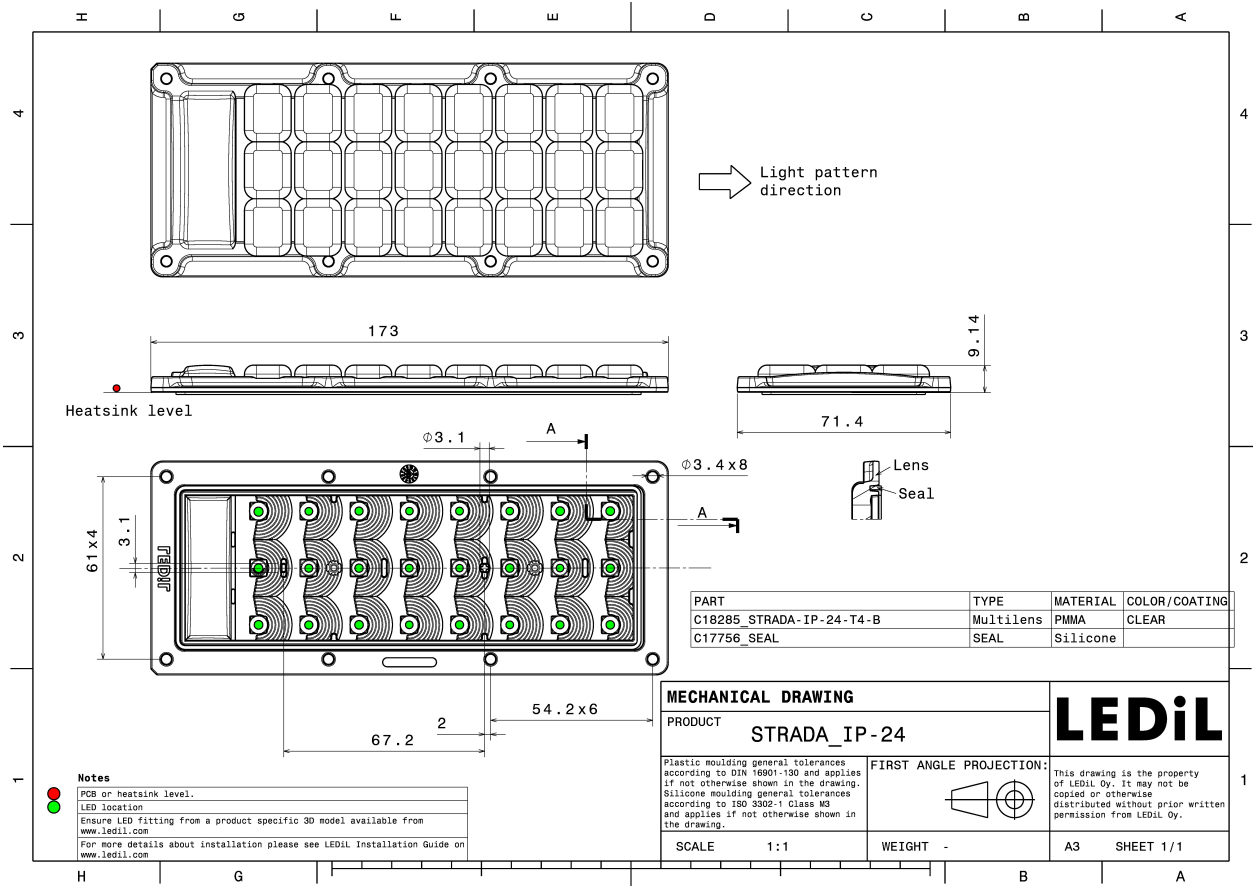


MATERIAL SPECIFICATIONS:

Component	Type	Material	Colour	Finish
STRADA-IP-24-T4-B	Multi-lens	PMMA	clear	
STRADA-IP-24-SEAL	Seal	Silicone	white	


ORDERING INFORMATION:

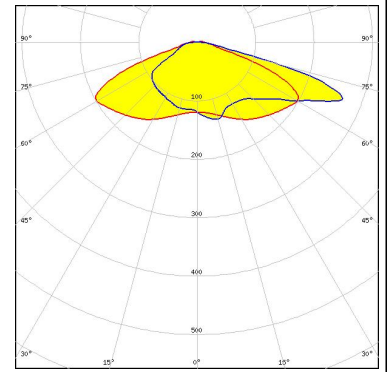
Component	Qty in box	MOQ	MPQ	Box weight (kg)
CS18286_STRADA-IP-24-T4-B » Box size: 476 x 273 x 247 mm	120	120	40	7.3



See also our general installation guide: www.ledil.com/installation_guide

PHOTOMETRIC DATA (MEASURED):

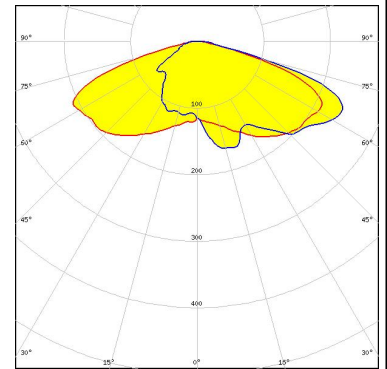
	
LED	LUXEON XR-5050 HE
FWHM / FWTM	Asymmetric
Efficiency	82 %
Peak intensity	0.5 cd/lm
LEDs/each optic	1
Light colour	White
Required components:	



PHOTOMETRIC DATA (SIMULATED):

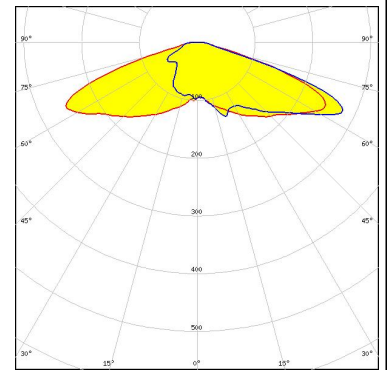
LUMILEDS

LED LUXEON 5050 HE
 FWHM / FWTM Asymmetric
 Efficiency 82 %
 Peak intensity 0.4 cd/lm
 LEDs/each optic 1
 Light colour White
 Required components:



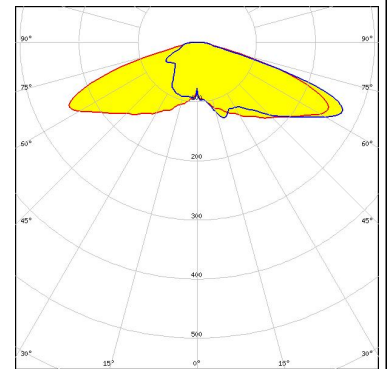
LUMILEDS

LED LUXEON 5050 Round LES
 FWHM / FWTM Asymmetric
 Efficiency 79 %
 Peak intensity 0.5 cd/lm
 LEDs/each optic 1
 Light colour White
 Required components:



LUMILEDS

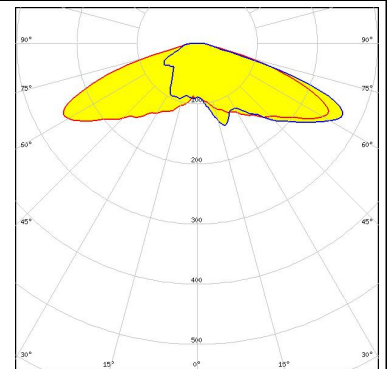
LED LUXEON 5050 Square LES
 FWHM / FWTM Asymmetric
 Efficiency 79 %
 Peak intensity 0.5 cd/lm
 LEDs/each optic 1
 Light colour White
 Required components:



OSRAM

Opto Semiconductors

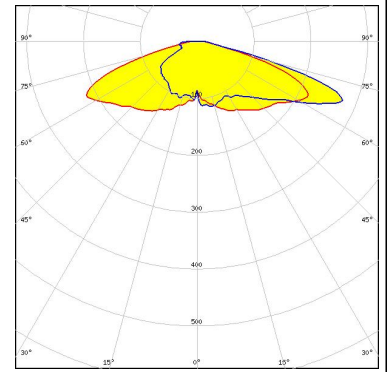
LED Duris S8
 FWHM / FWTM Asymmetric
 Efficiency 79 %
 Peak intensity 0.4 cd/lm
 LEDs/each optic 1
 Light colour White
 Required components:



PHOTOMETRIC DATA (SIMULATED):

SAMSUNG

LED LH502D
FWHM / FWTM Asymmetric
Efficiency 78 %
Peak intensity 0.4 cd/lm
LEDs/each optic 1
Light colour White
Required components:



SEOUL SEMICONDUCTOR

LED SEOUL DC 5050 6V
FWHM / FWTM Asymmetric
Efficiency 79 %
Peak intensity 0.4 cd/lm
LEDs/each optic 1
Light colour White
Required components:

