

HB-IP-24-O-PC

~40° + 75° oval beam for aisle lighting. Variant made from PC.

TECHNICAL SPECIFICATIONS:

| | |
|----------------------------|-----------------|
| Dimensions | 173.0 x 71.4 mm |
| Height | 0 mm |
| Fastening | pin, screw |
| Ingress protection classes | IP66, IP67 |
| ROHS compliant | yes ⓘ |

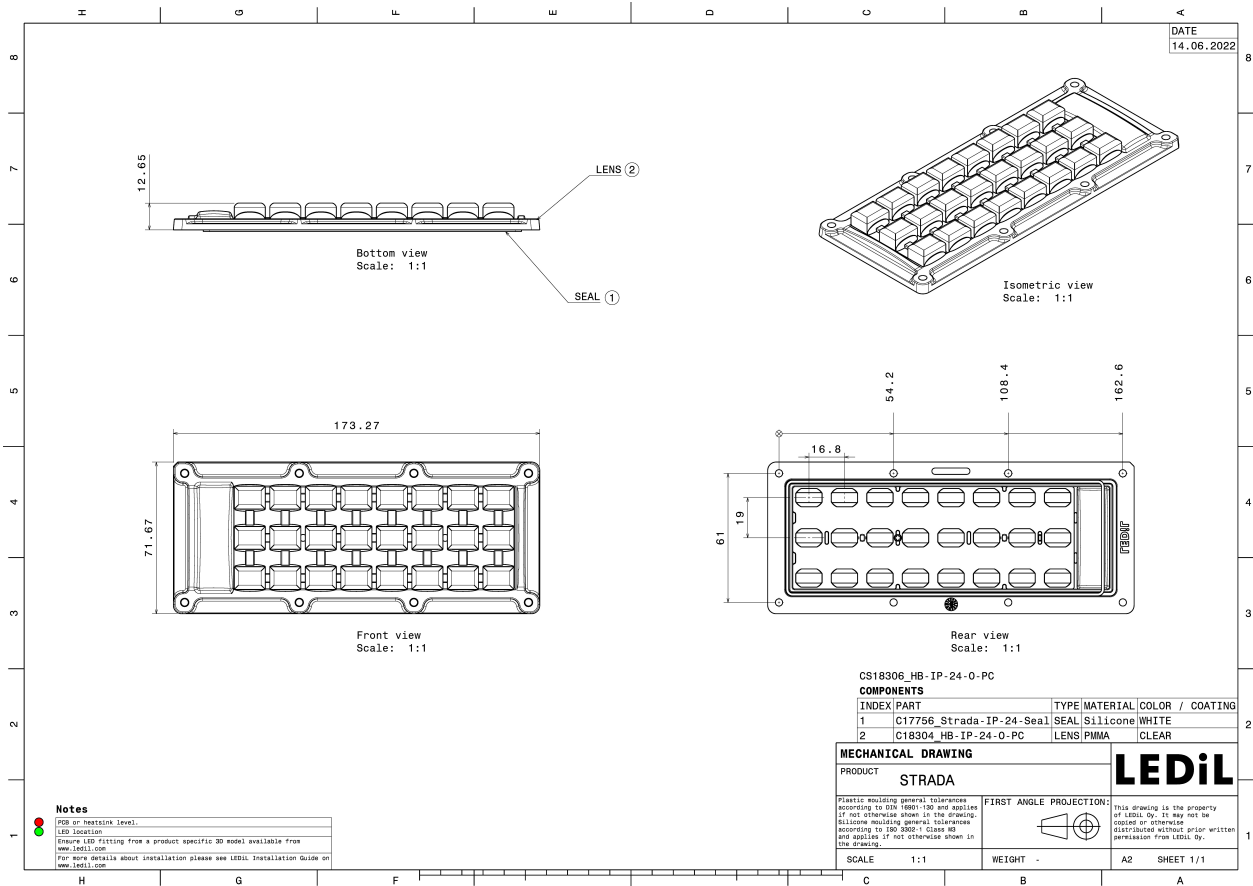


MATERIAL SPECIFICATIONS:

| Component | Type | Material | Colour | Finish |
|-------------------|------------|----------|--------|--------|
| HB-IP-24-O-PC | Multi-lens | PC | clear | |
| STRADA-IP-24-SEAL | Seal | Silicone | white | |

ORDERING INFORMATION:

| Component | Qty in box | MOQ | MPQ | Box weight (kg) |
|---|------------|-----|-----|-----------------|
| CS18306_HB-IP-24-O-PC » Box size: 476 x 273 x 247 mm | 108 | 108 | 36 | 8.5 |

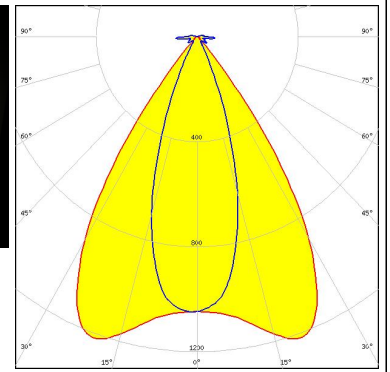


See also our general installation guide: www.ledil.com/installation_guide

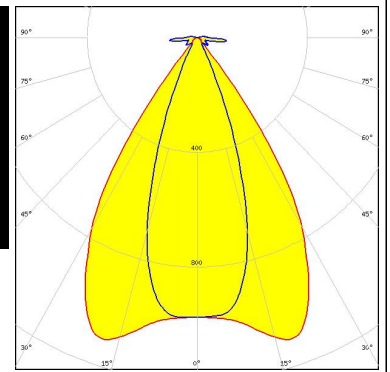
PHOTOMETRIC DATA (MEASURED):



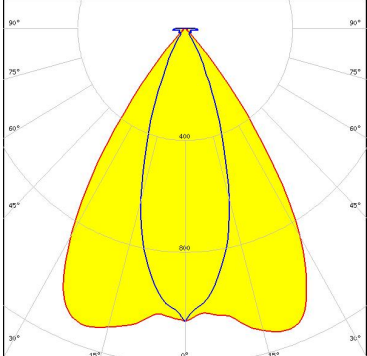
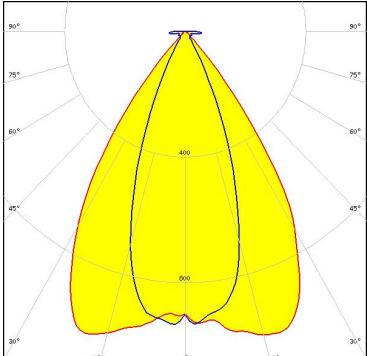
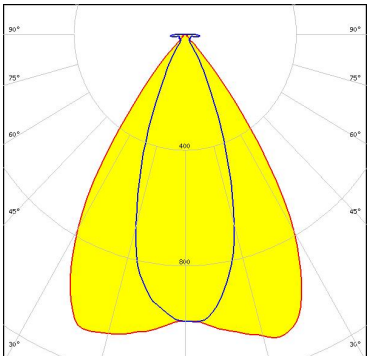
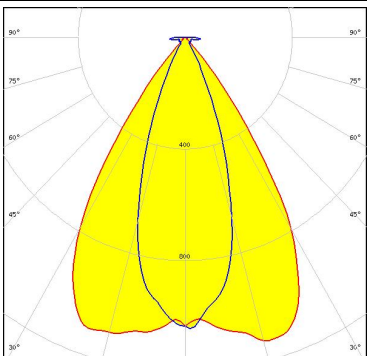
LED LUXEON 5050 Square LES
FWHM / FWTM 68.0 + 35.0° / 82.0 + 55.0°
Efficiency 82 %
Peak intensity 1.2 cd/lm
LEDs/each optic 1
Light colour White
Required components:



LED Duris S8
FWHM / FWTM 67.0 + 38.0° / 82.0 + 172.0°
Efficiency 83 %
Peak intensity 1.1 cd/lm
LEDs/each optic 1
Light colour White
Required components:



PHOTOMETRIC DATA (SIMULATED):

| | |
|---|---|
| <p>LUMILEDS</p> <p>LED LUXEON 5050 HE</p> <p>FWHM / FWTM 68.0 + 34.0° / 85.0 + 60.0°</p> <p>Efficiency 80 %</p> <p>Peak intensity 1.1 cd/lm</p> <p>LEDs/each optic 1</p> <p>Light colour White</p> <p>Required components:</p> |  |
| <p>MST <i>Your solutions</i></p> <p>LED RecLED 147x47mm 5800lm 730 5050 STRADA-IP-24 G2</p> <p>FWHM / FWTM 69.0 + 40.0° / 86.0 + 62.0°</p> <p>Efficiency 80 %</p> <p>Peak intensity 1 cd/lm</p> <p>LEDs/each optic 1</p> <p>Light colour White</p> <p>Required components:</p> |  |
| <p>SAMSUNG</p> <p>LED HiLOM RM24 ZP (LH502C)</p> <p>FWHM / FWTM 68.0 + 38.0° / 84.0 + 60.0°</p> <p>Efficiency 80 %</p> <p>Peak intensity 1.1 cd/lm</p> <p>LEDs/each optic 1</p> <p>Light colour White</p> <p>Required components:</p> |  |
| <p>SAMSUNG</p> <p>LED LH508C</p> <p>FWHM / FWTM 66.0 + 36.0° / 84.0 + 58.0°</p> <p>Efficiency 80 %</p> <p>Peak intensity 1.1 cd/lm</p> <p>LEDs/each optic 1</p> <p>Light colour White</p> <p>Required components:</p> |  |