

STRADA-IP-2X6-PXL

Fully asymmetric beam designed to highlight pedestrian crossings for left side traffic

TECHNICAL SPECIFICATIONS:

Dimensions	173.0 x 71.4 mm
Height	10.3 mm
Fastening	pin, screw
Ingress protection classes	IP67
ROHS compliant	yes ⓘ

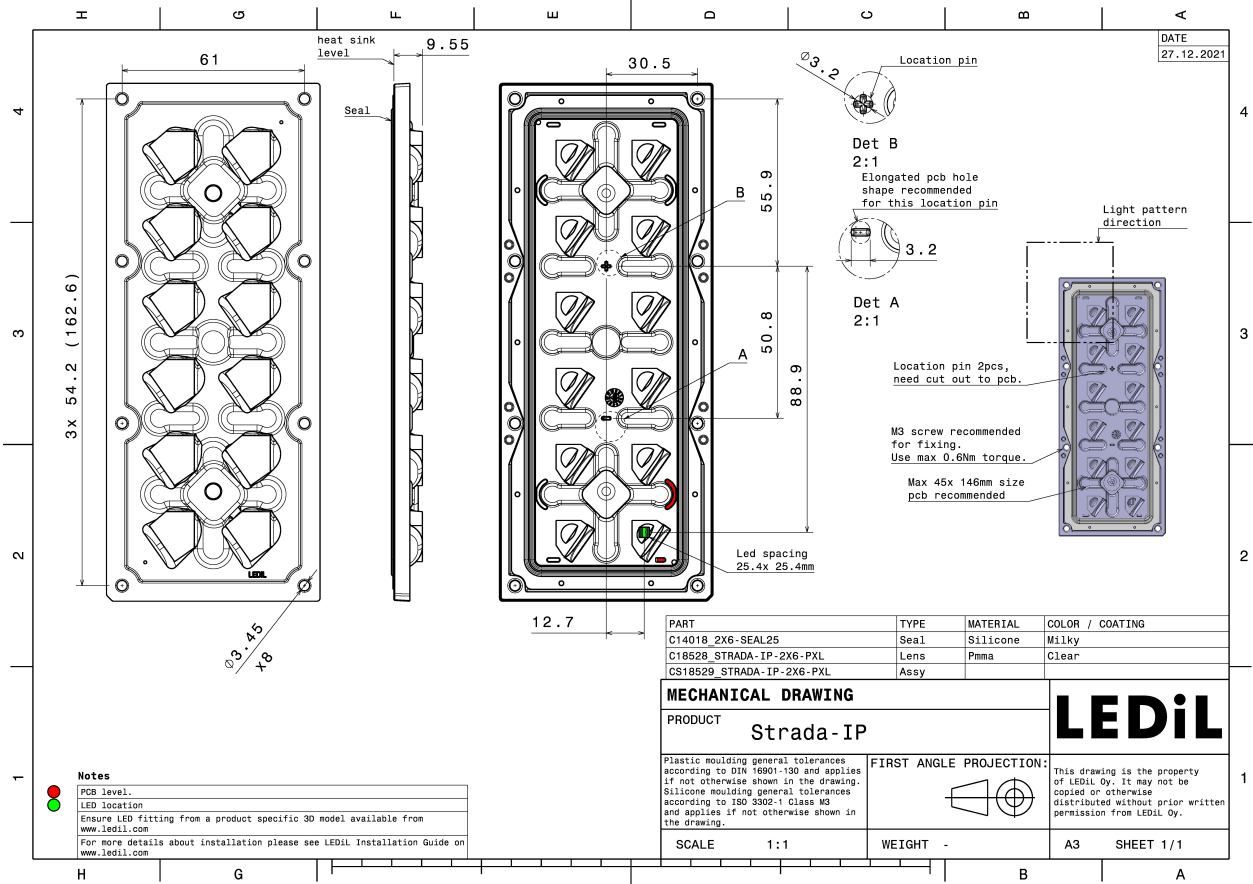


MATERIAL SPECIFICATIONS:

Component	Type	Material	Colour	Finish
STRADA-IP-2X6-PXL	Multi-lens	PMMA	clear	
2X6-SEAL25	Seal	Silicone	white	

ORDERING INFORMATION:

Component	Type	Qty in box	MOQ	MPQ	Box weight (kg)
CS18529_STRADA-IP-2X6-PXL » Box size: 476 x 273 x 247 mm	Multi-lens	120	40	40	7.6



See also our general installation guide: www.ledil.com/installation_guide

PHOTOMETRIC DATA (MEASURED):



LED XP-G3
FWHM / FWMT Asymmetric
Efficiency 96 %
Peak intensity 1 cd/lm
LEDs/each optic 1
Light colour White
Required components:

