

CST306-1T

Description:

Designed for switching power supply applications, Triad current sense transformers are used to detect the current passing through a conductor. These transformers are very reliable and operate over the frequency range of 20 kHz-200 kHz.

Electrical Specifications (@25C)

| ET VμSEC REF 20kHz | Turns Count | Min. Ind. mH | DCR Max. Ω | Pri. Amps |
|-----------------------|----------------|-----------------|------------|-----------|
| 500 | 50 CT | 3.5 | .340 | 35.0 RMS |

Safety:

These current sense transformers are constructed of UL rated 130°C materials.

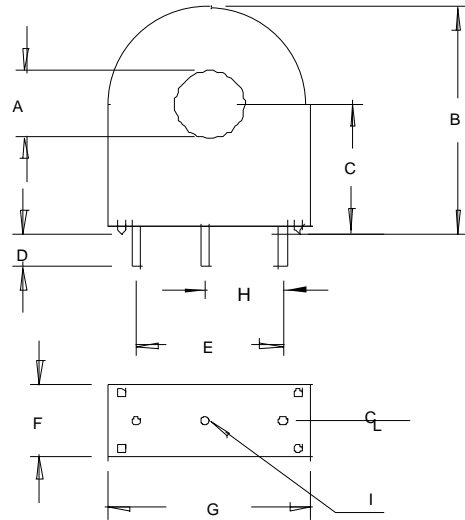
Dimensions:

| A Min | B Max | C Ref | D Ref | E Ref | F Max | G Max | H Ref | I Dia. Pins |
|----------|----------|----------|----------|----------|----------|----------|----------|----------------|
| .180 | .915 | .528 | .127 | .500 | .385 | .690 | .250 | .032 |

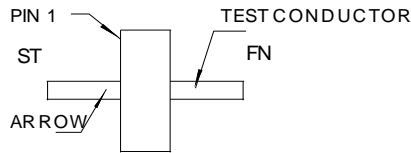
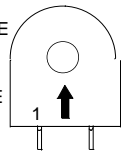
Units: In inches

Technical Notes:

1. Derate ET product by 32% for 50 kHz, 52% for 100 kHz and 50% for unidirectional operation.
2. Rated primary current renders approximately 40°C temp. rise.
3. Maximum recommended terminating resistance of 1 ohm per turn.
4. Primary is inserted through hole in casting.



1. START OF TEST CONDUCTOR TO HAVE THE SAME POLARITY AS PIN 1
2. DECAL ARROW ON CASE TO INDICATE POLARITY



POLARITY DETAIL TOP VIEW

RoHS Compliance: As of manufacturing date February 2016, all standard products meet the requirements of 2015/863/EU, known as the RoHS 3 initiative.

*Upon printing, this document is considered "uncontrolled". Please contact Triad Magnetics website for the most current version. For soldering and washing information please see <http://www.triadmagnetics.com/faq.html>