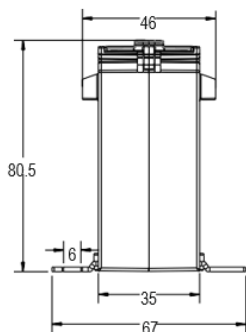
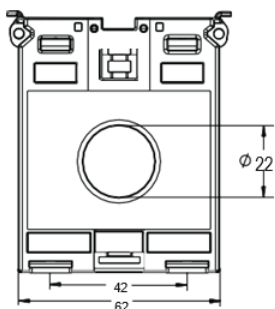


**DIMENSIONS (MM)**

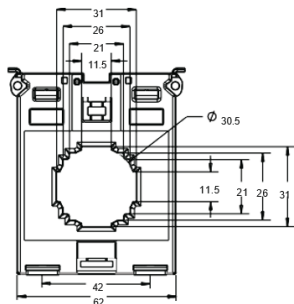
CT-30/5, 50/5, 100/5, 200/5



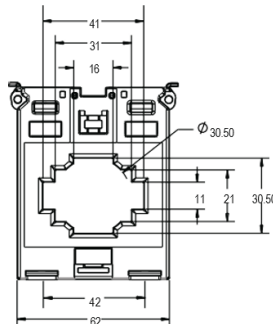
CT-30/5



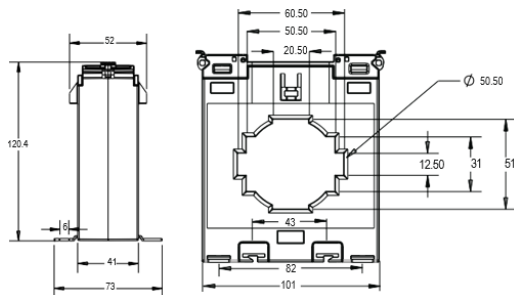
CT-50/5, 100/5



CT-200/5



CT-500/5, 1000/5



**ORDERING INFORMATION**

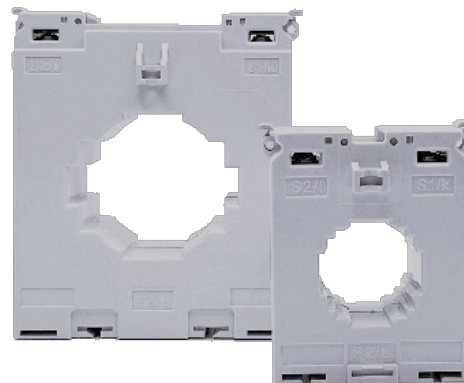
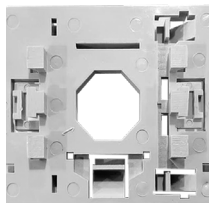
MODEL	CURRENT RATIO	BURDEN	ACCURACY CLASS
CT-30/5	30/5 A	1 VA	5
CT-50/5	50/5 A	1.5 VA	3
CT-100/5	100/5 A	3 VA	1
CT-200/5	200/5 A	2.5 VA	0.5
CT-500/5	500/5 A	5 VA	1
CT-1000/5	1000/5 A	15 VA	0.5

**ACCESSORIES**

DIN Rail Clamp

CTDRC

CTDRC - DIN Rail Clamp



**Current Transformers**

The **CT Current Transformers** are available in a wide range of bus bar sizes and a current measuring range of 30A to 1000A. The transformers are CE and UL cURus listed.

- Use with different bus bar
- Accuracy: Class 0.5 to 5
- 30/5 to 1000/5 Amperes
- Panel Mount/ DIN Rail Mount (Optional Accessory)

**SPECIFICATIONS**

<b>INPUT/OUTPUT</b>	Rated primary rating	30A to 1000A
	Rated secondary output	5A
<b>TECHNICAL SPECIFICATIONS</b>	Rated burden (VA)	1VA to 15VA
	Class of accuracy	0.5 to 5
	Thermal Nominal Continuous	120% of In Rated Current (I <sub>cth</sub> )
	Thermal short circuit current (I <sub>th</sub> )	I <sub>th</sub> = 60 X I <sub>n</sub> for 1 sec
	Instrument security factor	FS <5
	Insulation class	E (120°C max)
<b>ENVIRONMENTAL SPECIFICATIONS</b>	Max operating voltage (U <sub>m</sub> )	720V maximum
	Isolation test voltage	3kV AC 1 min
	Nominal rated frequency	AC 50Hz - 60Hz
<b>MOUNTING</b>	Mounting modes	Panel Mount / DIN rail Mount
	<b>STANDARD</b>	Applicable standard