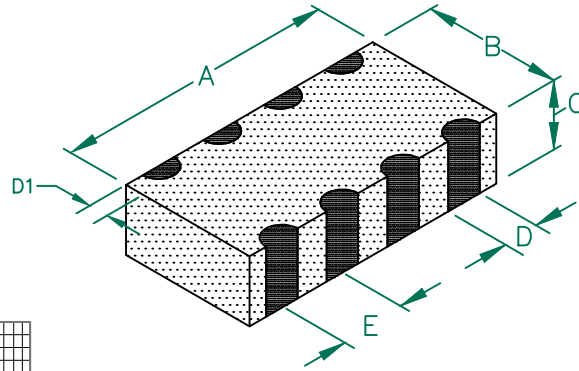


DA1206C121R-10

PHYSICAL DIMENSIONS:

A	3.20 [.126]	+ 0.200 [.008]
B	1.60 [.063]	+ 0.200 [.008]
C	0.80 [.031]	+ 0.200 [.008]
D	0.40 [.016]	+ 0.150 [.006]
D1	0.30 [.012]	+ 0.200 [.008]
E	0.80 [.031]	+ 0.100 [.004]



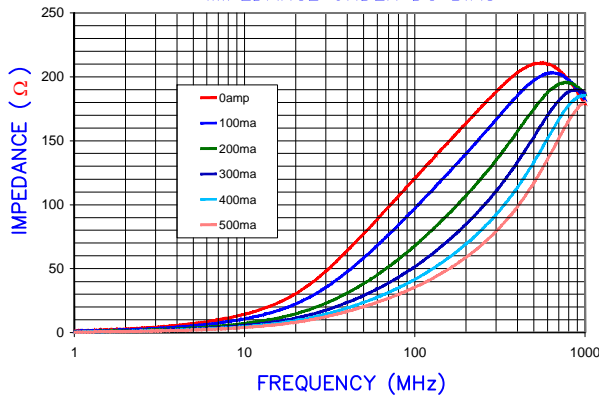
ELECTRICAL CHARACTERISTICS:

Z @ 100MHz (Ω)	DCR (Ω)	Rated Current
Nominal	120	
Minimum	90	
Maximum	150	0.2
300 mA		
LINE TO LINE INSULATION RESISTANCE >100 MΩ AT 75 VOLTS.		

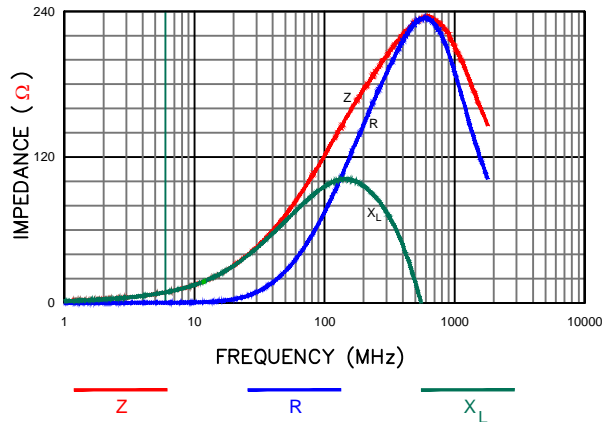
NOTES: UNLESS OTHERWISE SPECIFIED

1. TAPED AND REELED per CURRENT EIA SPECIFICATIONS 7" REELS, 3000 PCS/REEL.
2. TERMINATION FINISH IS 100% TIN.
3. COMPONENTS SHOULD BE ADEQUATELY PREHEATED BEFORE SOLDERING.
4. OPERATING TEMPERATURE TEMP: -40°C~+125°C (INCLUDING SELF-HEATING)

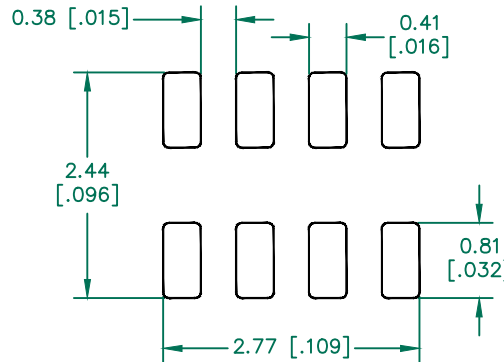
Z vs FREQUENCY
IMPEDANCE UNDER DC BIAS



|Z|, R, AND X vs. FREQUENCY

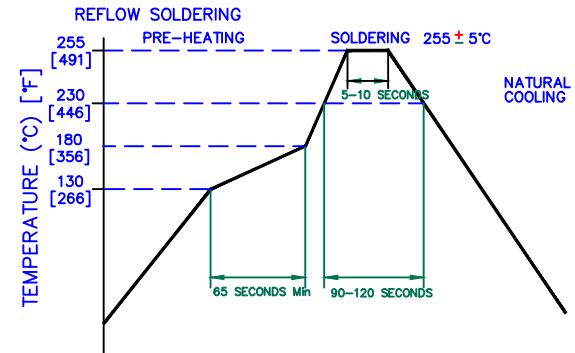


LAND PATTERNS FOR REFLOW SOLDERING



(For wave soldering, add 0.762 (0.030) to this dimension)

RECOMMENDED SOLDERING CONDITIONS



RoHS

DIMENSIONS ARE IN mm [INCHES].				This print is the property of Laird Tech. and is loaned in confidence subject to return upon request and with the understanding that no copies shall be made without the written consent of Laird Tech. All rights to design or invention are reserved.			
D	OPERATING TEMPERATURE UPDATE LAIRD LOGO AND REFLOW CURVE	08/05/13	QU	PROJECT/PART NUMBER: DA1206C121R-10	REV	PART TYPE:	DRAWN BY:
C	UPDATE COMPANY LOGO ADD ROHS	05/20/09	JRK		D	CO-FIRE	TMB
B	D1 dim chgd from 0.008 ±0.004 to 0.012 ± 0.008. UPDATE COMPANY LOGO	10/30/07	JRK		SCALE:	NTS	SHEET:
A	ORIGINAL DRAFT	03/30/04	TMB		DATE:	03/30/04	TOOL #
REV	DESCRIPTION	DATE	INT	CAD #	DA1206C121R-10-D		1 of 1

Laird