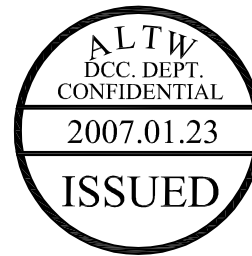
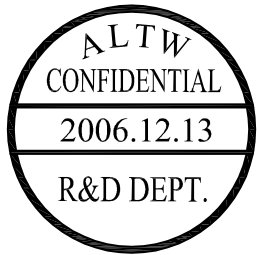
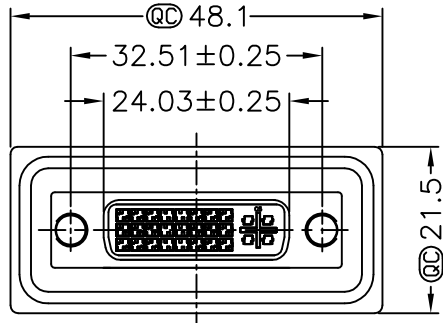
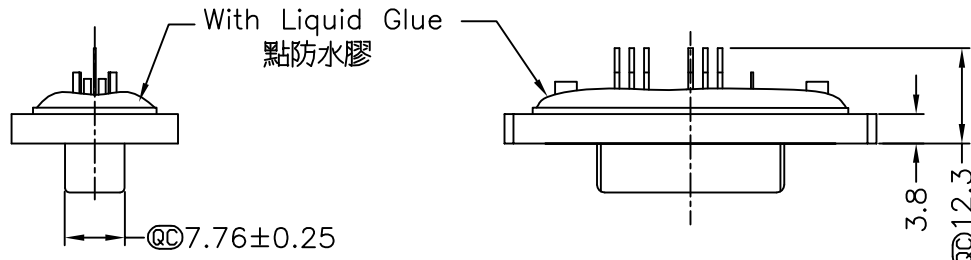
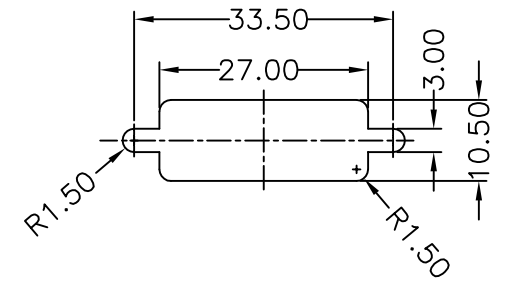


REV.	ECN NO.	DATE	SIGN	DESCRIPTION
A		2006/03/22	DAVID	Released Rev.A
B	LE3-710145	2006/12/13	Gao Ling	Move 0-ring to ZSE00100841



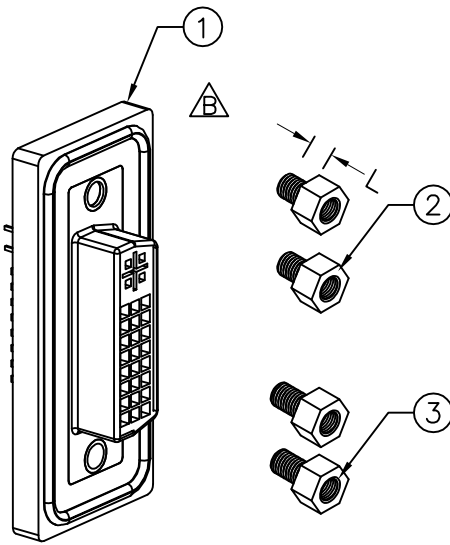
Screw L=5.0 For Panel Thickness Under 1.2mm
適用板厚為 1.2mm 以下

Screw L=6.0 For Panel Thickness Between 1.2~2.0mm
適用板厚為 1.2~2.0mm



Recommended Panel Cut-Out
建議挖孔尺寸

- Note:
- * QC Important Dimension.
 - * Waterproof Rate : IP68
IP68:1M of depth of water 24 hours
(防水等級 IP68)
(IP68:1米水深 24小時)
 - * Do Mating Test After Glued
點膠後, 須作對插測試
 - * Add glue can't highly exceed pin
(點膠高度不得蓋過 pin 針)
 - $\triangle A$ * DVI Conn. : Black Core , Nylon66
 - * Plastic Jacket : Black , Nylon+GF
 - $\triangle B$ * Pin : Copper Alloy , Gold Plated
 - * Ring : Light Blue, Silicone
 - $\triangle B$ * Screw : Copper Alloy, Nickel Plated, #4-40 UNC



UNIT:mm	
TOLERANCE	
.X	± 0.25
.XX	± 0.1
.XXX	± 0.05
ANGLES	$\pm 1^\circ$

TITLE	
Female DVI Connector(18+1)	
SCALE	Free
SHEET	1 OF 1
REV.	B
SIZE	A4
QC : Inspection Item	

Amphenol LTW
安費諾亮泰企業股份有限公司

ITEM NO	DDS-19PFFS-SL8001
DWG NO	DDS-19PFFS-SL8001
CUSTOMER	ALTW

DRAWN BY	Gao Ling	DATE	2006/12/13
CHECKED BY	Simon	DATE	2006/12/13
APPROVED BY	Max	DATE	2006/12/13

THIS DOCUMENT IS SUBJECT TO CHANGE WITHOUT NOTICE. IT IS CONFIDENTIAL AND A PROPERTY OF Amphenol LTW. DISCLOSURE TO THIRD PARTY HAS TO BE AUTHORIZED BY Amphenol LTW.