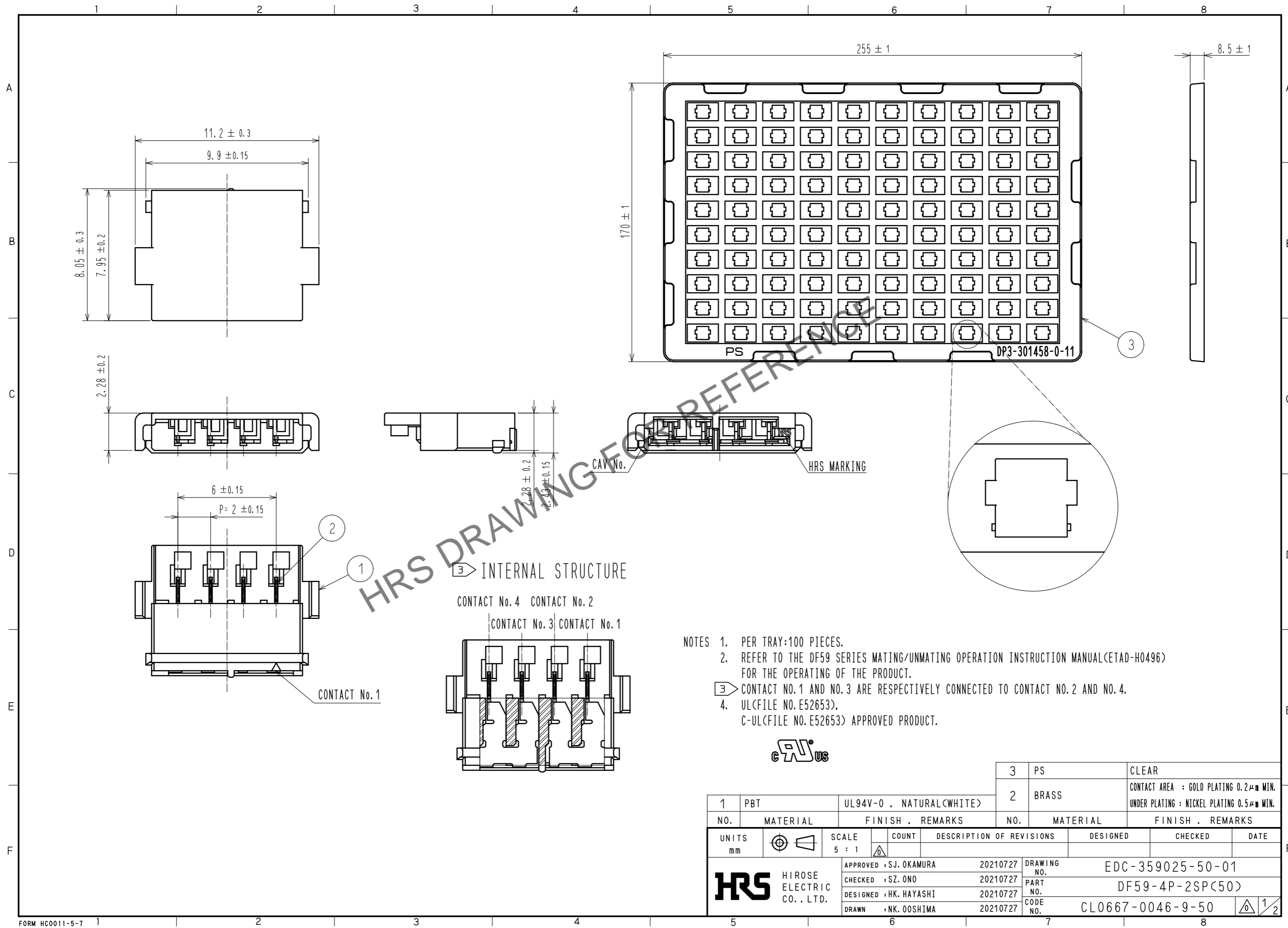


Dec.1.2023 Copyright 2023 HIROSE ELECTRIC CO., LTD. All Rights Reserved.  
In case of consideration for using Automotive equipment / device which demand high reliability, kindly contact our sales window correspondents.



- NOTES
1. PER TRAY:100 PIECES.
  2. REFER TO THE DF59 SERIES MATING/UNMATING OPERATION INSTRUCTION MANUAL(ETAD-H0496) FOR THE OPERATING OF THE PRODUCT.
  3. CONTACT NO.1 AND NO.3 ARE RESPECTIVELY CONNECTED TO CONTACT NO.2 AND NO.4.
  4. UL(FILE NO.E52653).  
C-UL(FILE NO.E52653) APPROVED PRODUCT.



1	PBT	UL94V-0 , NATURAL(WHITE)	3	PS	CLEAR
2	BRASS		2	BRASS	CONTACT AREA : GOLD PLATING 0.2μm MIN. UNDER PLATING : NICKEL PLATING 0.5μm MIN.
NO.	MATERIAL	FINISH . REMARKS	NO.	MATERIAL	FINISH . REMARKS
UNITS		SCALE	COUNT	DESCRIPTION OF REVISIONS	
mm		5 : 1		DESIGNED	CHECKED
<b>HRS</b> HIROSE ELECTRIC CO., LTD.		APPROVED : SJ. OKAMURA 20210727	DRAWING NO. EDC-359025-50-01		
		CHECKED : SZ. ONO 20210727	PART NO. DF59-4P-2SP(50)		
		DESIGNED : HK. HAYASHI 20210727	CODE NO. CL0667-0046-9-50		
		DRAWN : NK. OOSHIMA 20210727	1/2		

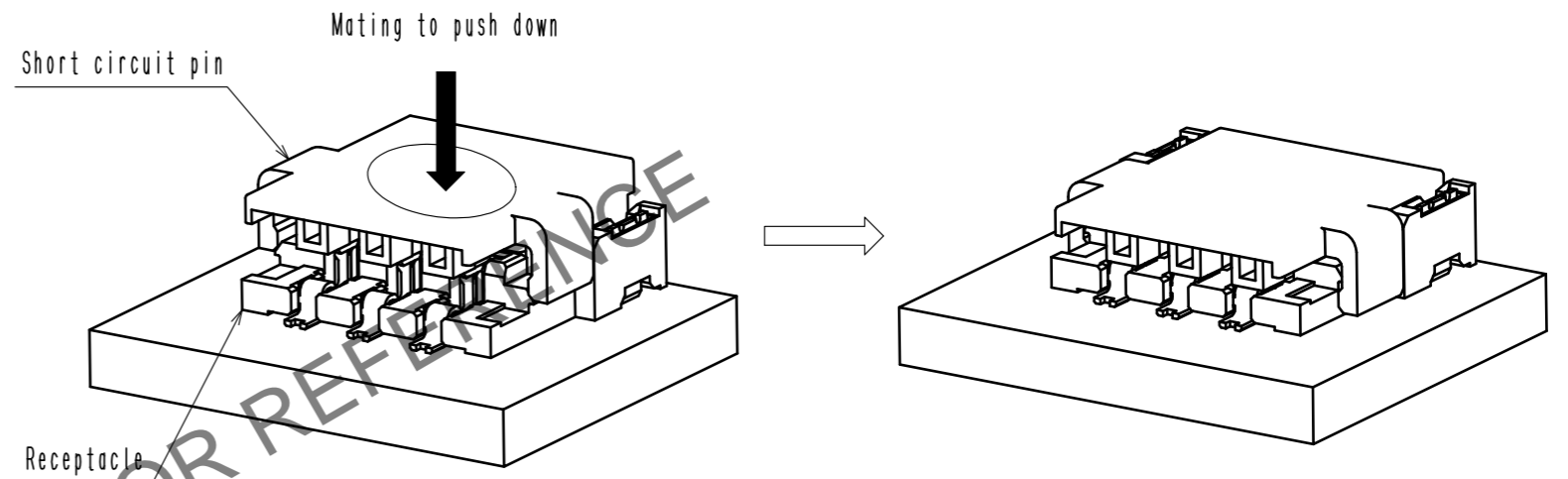
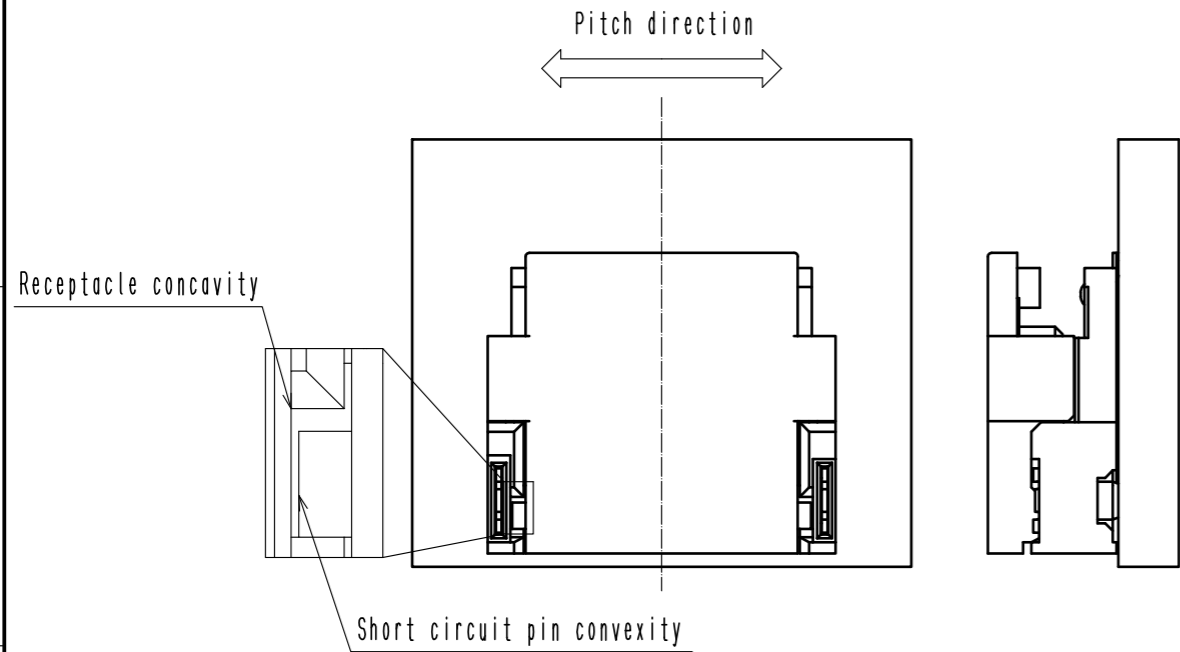
Dec.1.2023 Copyright 2023 HIROSE ELECTRIC CO., LTD. All Rights Reserved.  
In case of consideration for using Automotive equipment / device which demand high reliability, kindly contact our sales window correspondents.

# Operation Procedures for Crimp Socket

## 【 Mating 】

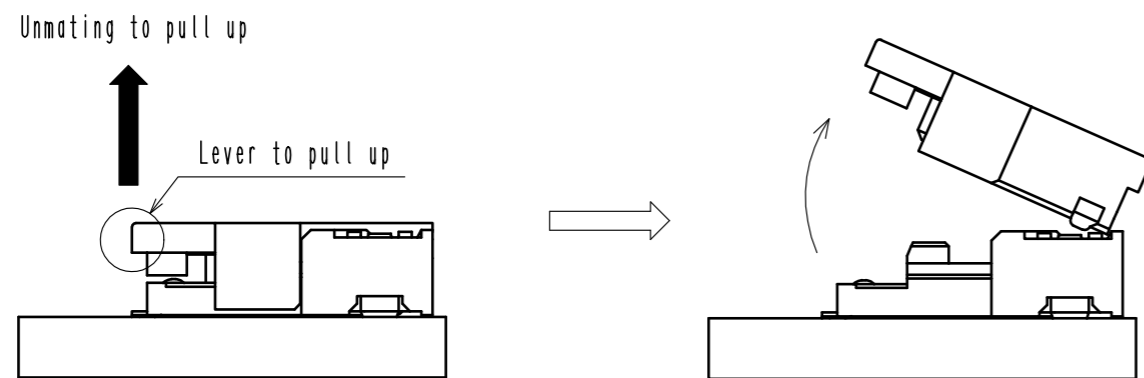
1. By positioning the convexity of the short circuit pin sides to the receptacle concavity, align the centers of the short circuit pin and the receptacle in pitch direction.

2. Press down at the center surface of short circuit pin.  
Note) Press down until the short circuit pin touches to the receptacle.



## 【 Unmating 】

1. Hook the lever with finger and lift up to the upper direction for unlock.



<b>HRS</b>	DRAWING NO.	EDC-359025-50-01
	PART NO.	DF59-4P-2SP(50)
	CODE NO.	CL0667-0046-9-50
		2/2