

# Industrial SLC SD Card



Standard Grade: Blue  
Industrial Grade: Red.



## Features

- Support static and global wear leveling
- S.M.A.R.T Supported
- Intelligent system for error recovery
- Excellent data transfer speed
- Enhanced power cycling
- Golden finger 30u"

R: 20MB  
W: 16MB

S.M.A.R.T

Wear  
Leveling

SPI Mode  
Support

ECC  
Engine

Enhanced  
Power Cycling

## Specifications

Interface	9 pin SD standard
Flash Type	SLC (Single Level Cell)
Density	128MB~32GB
Transfer Mode	SD and SPI mode
Sustained R/W Performance	Read : 20 MB/sec (max.) Write : 16 MB/sec (max.)

## Environmental

DC Input	2.7V to 3.6V
Power consumption (Max.)	Read: 40 mA Write: 60 mA Idle: 180 $\mu$ A
Operating Temperature	0°C~+70°C (Standard Grade) -40°C~+85°C (Industrial Grade)
Storage Temperature	-55°C~+95°C
Humidity	Relative Humidity: 10-95%, non-condensing
Flash	60,000 program/erase cycles
Endurance	
MTBF	> 3,000,000 hours
Certification	CE, FCC, RoHS
Warranty	5 years

## Mechanicals

Dimension (W x L x H)	24mm x 32mm x 2.1mm
Weight	7.5g $\pm$ 1g
Vibration	7 Hz to 2K Hz, , 3 axes
Shock	Duration: 0.5ms, 1500G, 3 axes

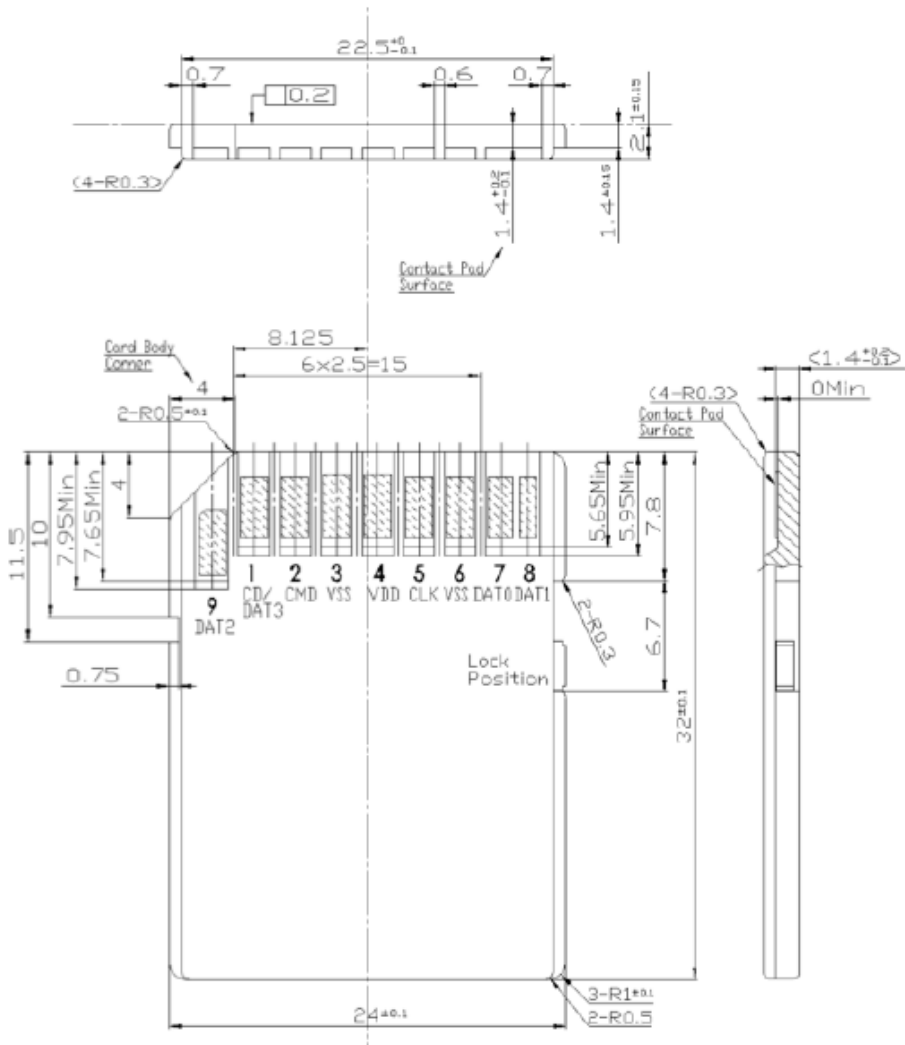
## Health monitoring Tool

S.M.A.R.T.	Supported
------------	-----------

## Ordering Information

Capacity	Standard Grade	Industrial Grade
128MB(24nm)	DS2A- <a href="#">128I81C1B</a>	DS2A- <a href="#">128I81W1B</a>
256MB(24nm)	DS2A- <a href="#">256I81C1B</a>	DS2A- <a href="#">256I81W1B</a>
512MB(32nm)	DS2A- <a href="#">512I81C1B</a>	DS2A- <a href="#">512I81W1B</a>
512MB(24nm)	DESDC- <a href="#">512I81AC1SB</a>	DESDC- <a href="#">512I81AW1SB</a>
1GB(32nm)	DS2A- <a href="#">01GI81C1B</a>	DS2A- <a href="#">01GI81W1B</a>
1GB(24nm)	DESDC- <a href="#">01GI81AC1SB</a>	DESDC- <a href="#">01GI81AW1SB</a>
2GB(32nm)	DS2A- <a href="#">02GI81C1B</a>	DS2A- <a href="#">02GI81W1B</a>
2GB(24nm)	DESDC- <a href="#">02GI81AC1SB</a>	DESDC- <a href="#">02GI81AW1SB</a>
4GB(24nm)	DS2A- <a href="#">04GI81C1B</a>	DS2A- <a href="#">04GI81W1B</a>
8GB(24nm)	DS2A- <a href="#">08GI81C1B</a>	DS2A- <a href="#">08GI81W1B</a>
16GB(24nm)	DS2A- <a href="#">16GI81C1B</a>	DS2A- <a href="#">16GI81W1B</a>
32GB(24nm)	DS2A- <a href="#">32GI81C1B</a>	DS2A- <a href="#">32GI81W1B</a>

# Mechanical Dimension



**Tolerance  $\pm 0.15$**

DESIGN • SERVICE • QUALITY • DELIVERY