

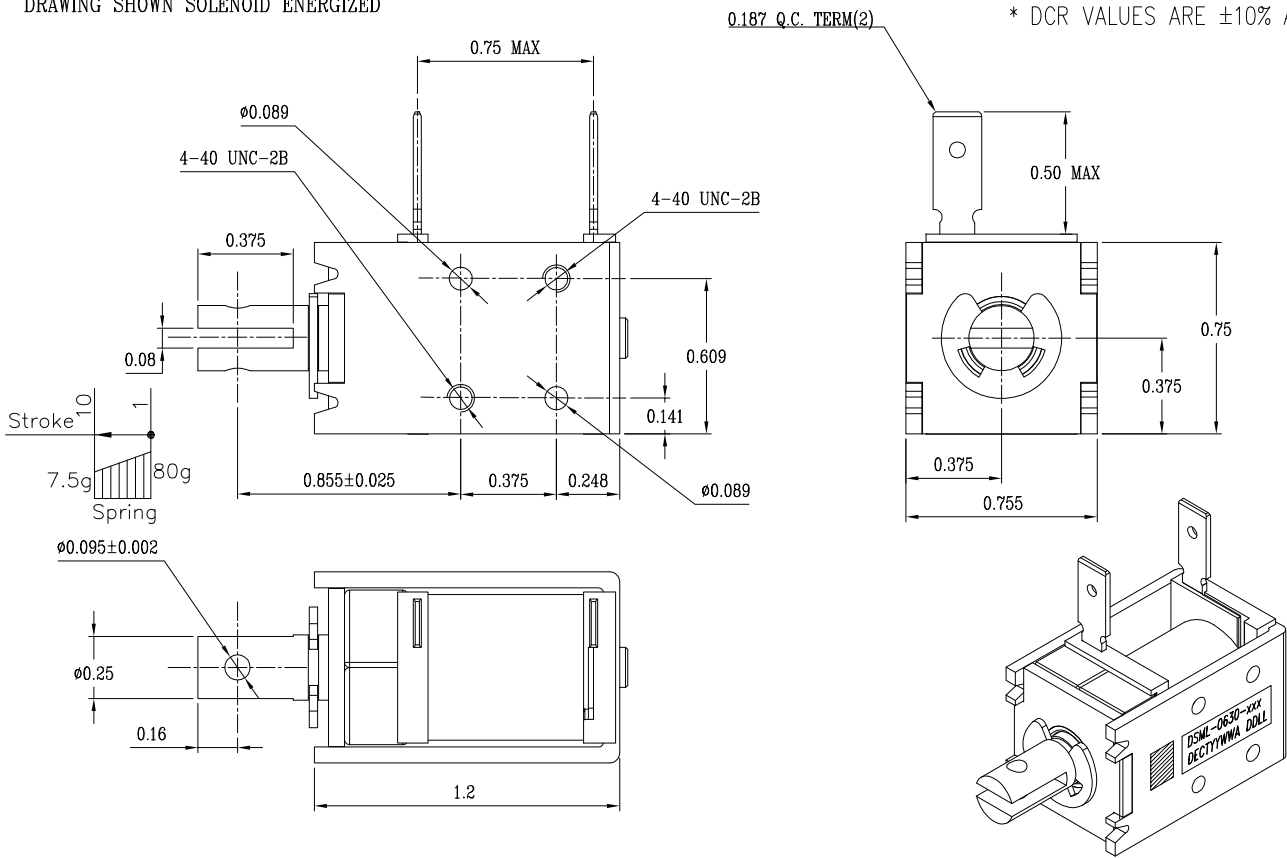
SOLENOID PRODUCT SPECIFICATION

| PART No. | VOLTAGE | DUTY CYCLE | POWER (W) | CURRENT (A) | DCR (Ω) * | Release Volts |
|---------------|---------|----------------|-----------|-------------|-----------|---------------|
| DSML-0630-12C | 12 VDC | 100% | 4 | 0.4 | 38 | 6.7-9.0 |
| DSML-0630-12E | 12 VDC | 25%, 60sec On | 9 | 0.8 | 16 | 4.0-9.0 |
| DSML-0630-12P | 12 VDC | 10%, 0.1sec On | 40 | 3.4 | 3.6 | 2.0-9.0 |
| DSML-0630-18C | 18 VDC | 100% | 4 | 0.3 | 82 | 10.0-18.0 |
| DSML-0630-18E | 18 VDC | 25%, 60sec On | 9 | 0.6 | 38 | 6.5-20.0 |
| DSML-0630-18P | 18 VDC | 10%, 0.1sec On | 40 | 2.6 | 8 | 3.0-8.5 |
| DSML-0630-24C | 24 VDC | 100% | 4 | 0.2 | 144 | 15.0-28.0 |
| DSML-0630-24E | 24 VDC | 25%, 60sec On | 9 | 0.4 | 64 | 8.5-25.0 |
| DSML-0630-24P | 24 VDC | 10%, 0.1sec On | 40 | 1.8 | 14 | 4.0-12.0 |

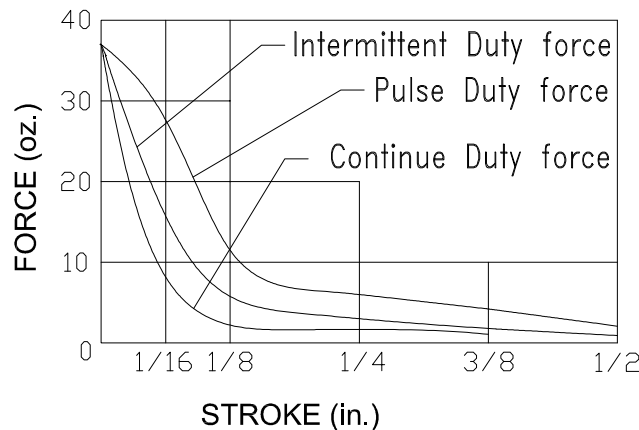
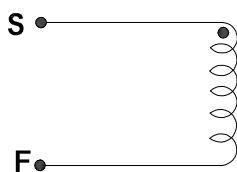
1. MECHANICAL DIMENSIONS :

DRAWING SHOWN SOLENOID ENERGIZED

* Release value are ±10% at 25°C.
 * DCR VALUES ARE ±10% AT 25°C



2. SCHEMATIC AND CONSTRUCTION :



UNIT : inch.

UNLESS TOLERANCES.

XX = ±0.02
 XX = ±0.01
 ANGLES = ±1°

INSULATION MATERIALS: UL CONSTRUCTION, CLASS B 130°C
 LIFE EXPECTANCY: 100K CYCLES OPERATIONS

| LAYER TEST | IR. @500 Vdc. | HI-POT |
|-------------------|---------------|---------------|
| (S-F) 500Vp. MIN. | COIL TO FRAME | @50/60Hz.,2mA |
| TEST ONLY COIL | 50 MOHM MIN. | COIL TO FRAME |
| | | 600Vac.,1s |