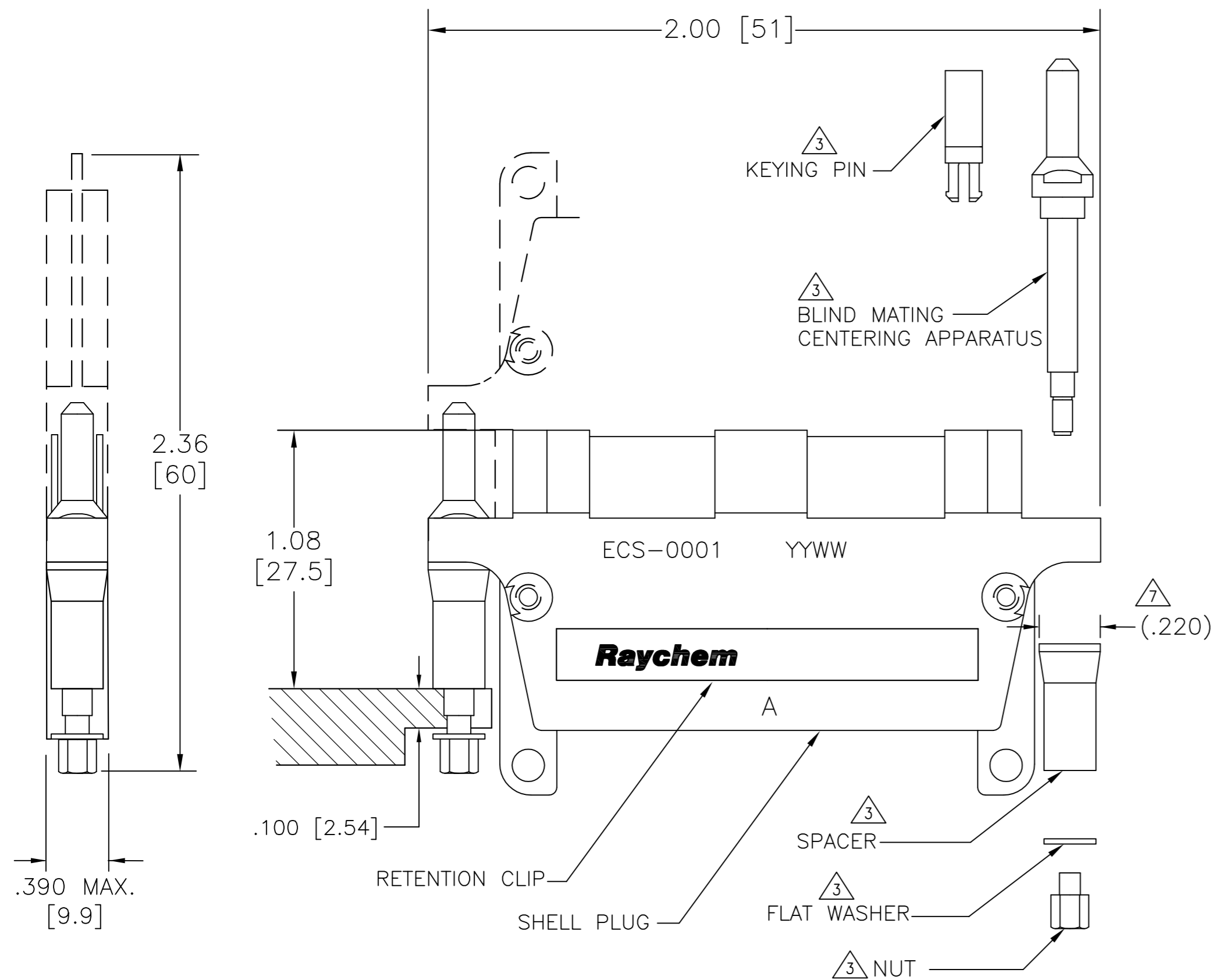


THIS DRAWING IS UNPUBLISHED. RELEASED FOR PUBLICATION  
 © COPYRIGHT - By - ALL RIGHTS RESERVED.

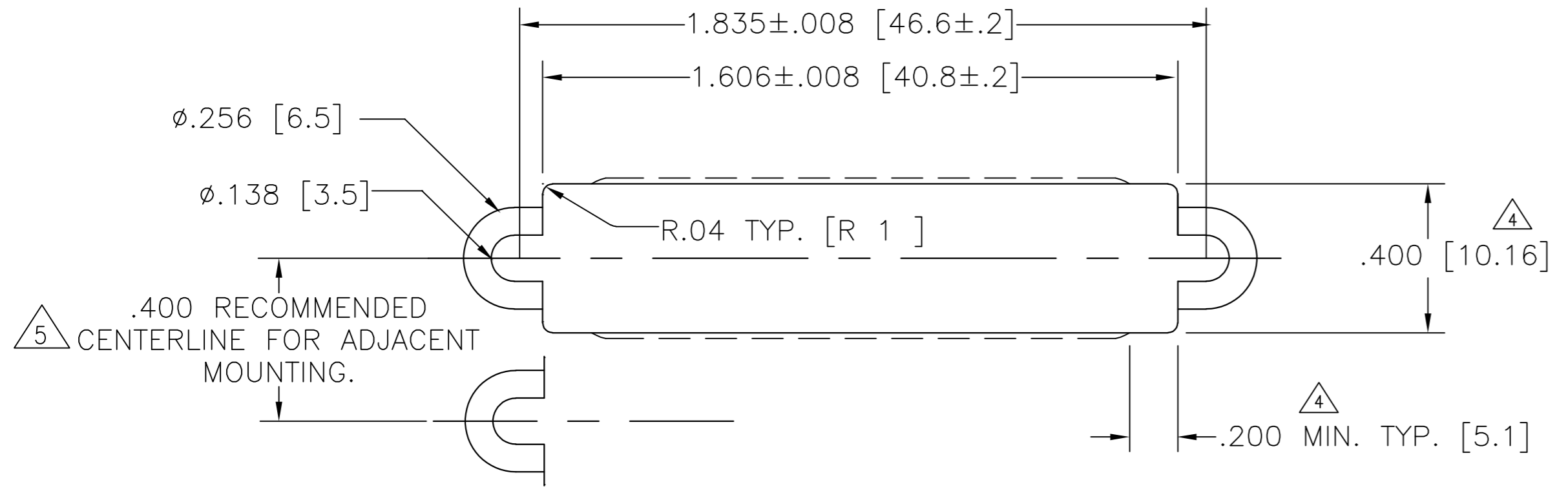
LOC		DIST		REVISIONS			
P	LTR	DESCRIPTION	DATE	DWN	APVD		
	H	ECO-13-012568	14AUG13	KG	MS		



NOTES:

- MATERIAL:
  - A) SHELL PLUG ALUMINUM ALLOY PER QQ-A-591
  - B) RETENTION CLIP COPPER ALLOY 172 PER QQ-C-533
  - C) BLIND MATING CENTERING APPARATUS STAINLESS STEEL PER QQ-S-763, 300 SERIES
  - D) NUT STAINLESS STEEL PER QQ-S-763, 300 SERIES
  - E) SPACER STAINLESS STEEL PER QQ-S-763, 300 SERIES
  - F) FLAT WASHER STAINLESS STEEL PER QQ-S-763 OR QQ-S-766, 300 SERIES
  - G) KEYING PIN HIGH GRADE POLYARYLENE THERMOPLASTIC, MOLDED
- FINISH:
  - A) SHELL PLUG CADMIUM PLATED PER QQ-P-416 OVER NICKEL UNDERPLATE
  - B) RETENTION CLIP CADMIUM PLATED PER QQ-P-416
  - C) BLIND MATING CENTERING APPARATUS CADMIUM PLATED PER QQ-P-416
  - D) NUT CADMIUM PLATED PER QQ-P-416
  - E) SPACER CADMIUM PLATED PER QQ-P-416
  - F) FLAT WASHER CADMIUM PLATED PER QQ-P-416

- 3 THESE ITEMS ARE SUPPLIED UNASSEMBLED.
- 4 THE DIMENSION OF .400 WIDTH MUST BE MAINTAINED FOR .200 MINIMUM LENGTH EACH SIDE FOR PROPER ALIGNMENT. AFTER THAT VARIATION IN .400 DIMENSION IS PERMISSIBLE.
- 5 PANEL CUT OUT FOR STACKING CONDITION MAY VARIES, DEPENDING ON THE APPLICATION.
- 6 MATING CONNECTOR: ECS-0005
- 7 LARGER DIAMETER END (.220) REF OF TAPERED SPACER TO BE ORIENTED TOWARDS SHELL FLANGE DURING ASSEMBLY AT 2 PLACES.



5 PANEL CUT OUT

THIS DRAWING IS A CONTROLLED DOCUMENT.		DWN K.GLATFELTER 13AUG2013		
DIMENSIONS: INCHES [mm]		CHK M.SPICER 13AUG2013		
TOLERANCES UNLESS OTHERWISE SPECIFIED:		APVD M.SPICER 13AUG2013	NAME 1 - INCH PLUG, BLIND MATING MTC SERIES	
0 PLC ± -		PRODUCT SPEC	SIZE A2	
1 PLC ± -		APPLICATION SPEC	CAGE CODE 00779	
2 PLC ± .02 [0.5]			DRAWING NO ECS-0001	
3 PLC ± .005 [0.13]			RESTRICTED TO	
4 PLC ± -			SCALE NTS	
ANGLES ± -			SHEET 1 of 1	
FINISH		WEIGHT .044 LB [20.0] GRAMS	REV H	
MATERIAL		CUSTOMER DRAWING		