



# EDS3000PR

Device Server: Serial to Ethernet



## REMOTELY CONNECT AND MANAGE YOUR SERIAL DEVICES

The EDS3000PR is the next generation of enterprise-grade, rack-mountable hybrid Ethernet terminal/multi serial port device servers (8, 16, 32) for easy remote access and management of virtually any IT/networking equipment or edge devices like medical equipment, POS terminals, or security equipment.

### Comprehensive Device Security Framework

EDS3000PR device server delivers an unprecedented level of intelligence and safety with SSL/TLS, AES, and SSH built-in. EDS provides enterprise-level security, allowing safe remote access and management from practically anywhere.

Lantronix core software carries 30 years of 'data-center grade' protection, so each networked device has the same level of security as corporate data center equipment and provides robust defenses to hostile Internet attacks.

### Easy Configuration

Setup is a breeze with Windows-based Lantronix Provisioning Manager, which can be used locally or remotely with the Lantronix ConsoleFlow™ device management platform. A "Cisco-like" command-line interface (CLI) simplifies configuration and control, making it easier to integrate edge devices or data center equipment into the network. EDS3000PR leverages the Lantronix Com Port Redirector virtualization software, allowing existing applications to work with the EDS with no code modifications.

### Centralized Device Management Platform

Monitor, manage, and control your devices from anywhere, at any time with the ready-to-use software platform web application. The easy-to-use platform provides software-defined automation with zero-touch provisioning across all of your devices and the capture of device telemetry data for event management and analytics.

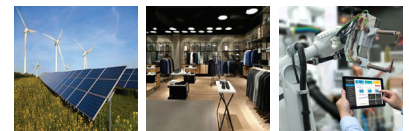
### Perfect For:



Energy

Cities

Medical



Industrial

Retail

Robotics

### EDS3000PR Highlights

- Quickly connect any device with a serial port to the network using robust SSH or SSL enterprise-level security
- Easily customize and enhance the EDS for your unique application
- Simple device setup, configuration and monitoring with powerful, industry-standard management tools, including Windows-based Lantronix Provisioning Manager and cloud-based ConsoleFlow
- 1U rack-mountable, data center-ready design



## Features and Specifications

### Hardware

- CPU: Cortex A9
- 4 Gbit (512 MB) Flash
- 4 Gbit (512 MB) RAM
- On-board memory: 8MB Flash
- Ethernet 10/100/1000Mbps

### Serial Interface

- Software selectable data rates from 300 to 230K Baud
- Characters: 7 or 8 data bits
- Parity: Odd, Even, None
- Stop Bits: 1 or 2
- Modem Control Signals: CTS, RTS, DTR, DCD
- Flow Control: XON/XOFF (software), CTS/RTS (hardware), None

### Network Interface

- 10/100/1000Mbps Ethernet
- 8, 16, or 32 ports RJ45 software selectable serial ports
- Protocols: HTTP, HTTPS, FTP, TFTP, Telnet, TCP, UDP, DHCP, SSHv2, SSLv3, SNMP v2, Auto IP, RSS, ARP, ICMP, SYSLOG, AES, SMTP, DNS, BOOTP

### Security

- SSL 3, TLS 1.0, TLS 1.1, TLS 1.2, TLS 1.3s
- MD5,SHA-1,SHA-2
- RSA, DSA and ECDSA
- Password protection
- IP address filtering

### Software

- Lantronix Provisioning Manager
- ComPort Redirector™
- Secure ComPort Redirector

### Management

- Internal web server, SNMP v1, SNMP v2, SNMP v3, Serial Login,
- Telnet SSH login, XML
- ConsoleFlow
- Upgradeable FW via the Web Manager, FTP or serial port

### Internal Web Server

- Customizable with CGI
- Web content on local file system and updatable through ftp

### Environmental

- Operating: 0° to 55° C (32° to 131° F)
- Storage: -40° to 70° C (-40° to 151° F)
- Relative Humidity: 5 to 95%, non-condensing

### Power

- 100-240VAC, 50 to 60 Hz IEC-type cord
- 20 Watts

### Regulatory Approvals

- FCC, IC, CE, UL/CB

### Dimensions

- Size: 30.5cm (12 in) L x 43.8 cm (17.25 in) W x 4.4 cm (1.75 in) H, 1U
- Weight: 4. 54 kg (10 lb)

### Warranty

- 3 year limited

## Ordering Information

| Part Number  | Description   |
|--------------|---|
| EDS3008PR1NS | EDS3008PR secure device server, 8-port serial, 1GbE Ethernet, 110-240 VAC, 1U         |
| EDS3016PR1NS | EDS3016PR secure serial device server, 16-port serial, 1GbE Ethernet, 110-240 VAC, 1U |
| EDS3032PR1NS | EDS3032PR secure serial device server, 32-port serial, 1GbE Ethernet, 110-240 VAC, 1U |

| Accessories Number          | Description                                  |
|-----------------------------|--|
| 200.2066A                   | RJ45 to DB25M cable adapter (DTE Device)     |
| 200.2067A                   | RJ45 to DB25F cable adapter (DTE Device)     |
| 200.2069A                   | RJ45 to DB9M cable adapter (DTE Device)      |
| 200.2070A                   | RJ45 to DB9F cable adapter (DTE Device)      |
| 200.2071                    | RJ45 to DB9M cable adapter ( DCE Device)     |
| 200.2072                    | RJ45 to DB9F cable adapter (DCE Device)      |
| 200.2073                    | RJ45 to DB25M cable adapter (DCE Device)     |
| 200.2074                    | RJ45 to DB25F cable adapter (DCE Device)     |
| 500-153                     | Cable; RJ45 Loopback Adapter                 |
| ADP010104-01                | Cable; rolled serial adapter, 0.1m (0.33 ft) |
| 200.0062                    | Cable; RJ45, 2 m (6.6 ft)                    |
| 200.0063                    | Cable; RJ45, 5 m (16.4 ft)                   |
| 200.0064                    | Cable; RJ45, 10 m (32.8 ft)                  |
| Cable; RJ45, 10 m (32.8 ft) | 10 m (32.8 ft)5 Cable; RJ45, 15 m (49.2 ft)  |

## Contact Information

### Americas

800.422.7055  
americas\_sales@lantronix.com  
www.lantronix.com  
NASDAQ: LTRX

### Europe

+31 (0) 76.52.3.6.74 4  
eu\_sales@lantronix.com

### Asia/Pacific/Japan

+852 3428.2338  
asiapacific\_sales@lantronix.com

China: +86.21.6237.8868

India: +91 994-551-2488

Indonesia: +91 994-551-2488

Japan: +81.8.50.1354.6201

