



Quick Start Guide

EK-P4

Quick Start Guide EK-P4

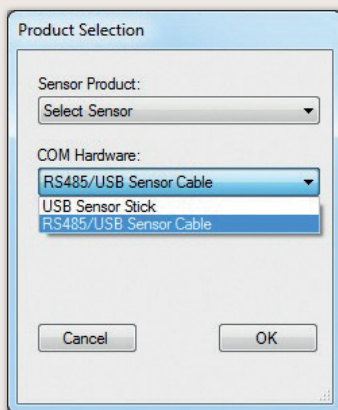
1 Install FTDI USB driver for the sensor cable.
(<http://www.ftdichip.com/Drivers/VCP.htm>)

2 Install software after download from: www.sensirion.com/USB-viewer

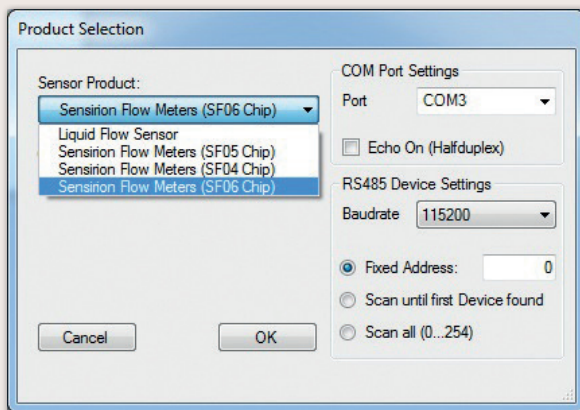
3 Connect the USB sensor cable to the sensor PCB and the PC.

4 Start up the USB RS485 Sensor Viewer.

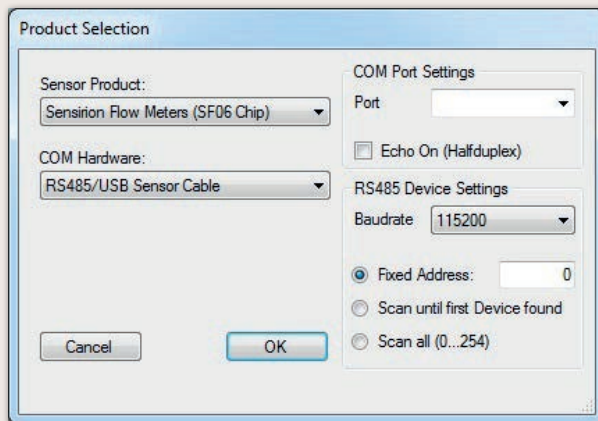
5 Under COM Hardware, select «RS485/USB Sensor cable».



6 Select the sensor product «Sensirion Flow Meters (SF06 Chip)».

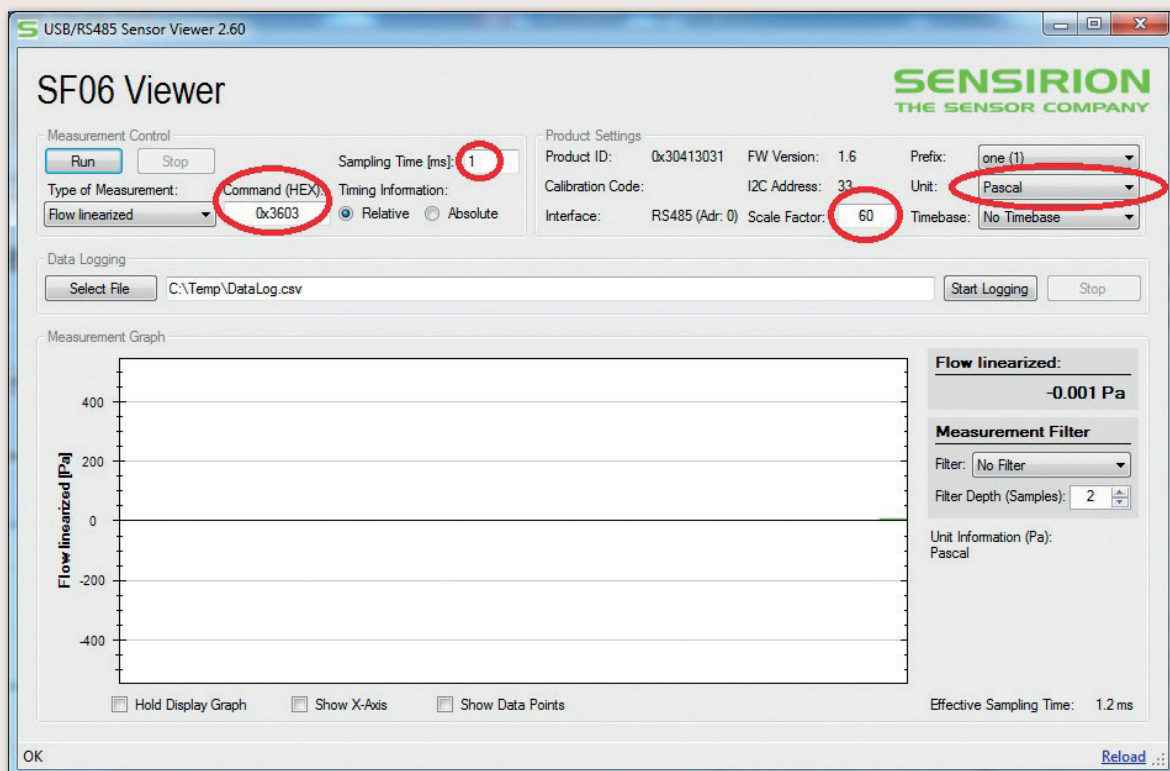


7 Select **COM port** and press «OK». Highest COM port is most often correct.



8 The SF06 Viewer appears. Adjust the **following settings** first:

- Change units to «Pascal».
- Set scale factor to 60.
- Set sampling time to 1ms or more.
- Enter command HEX 0x3603.



9 Press «Run».