

Evaluation Kit

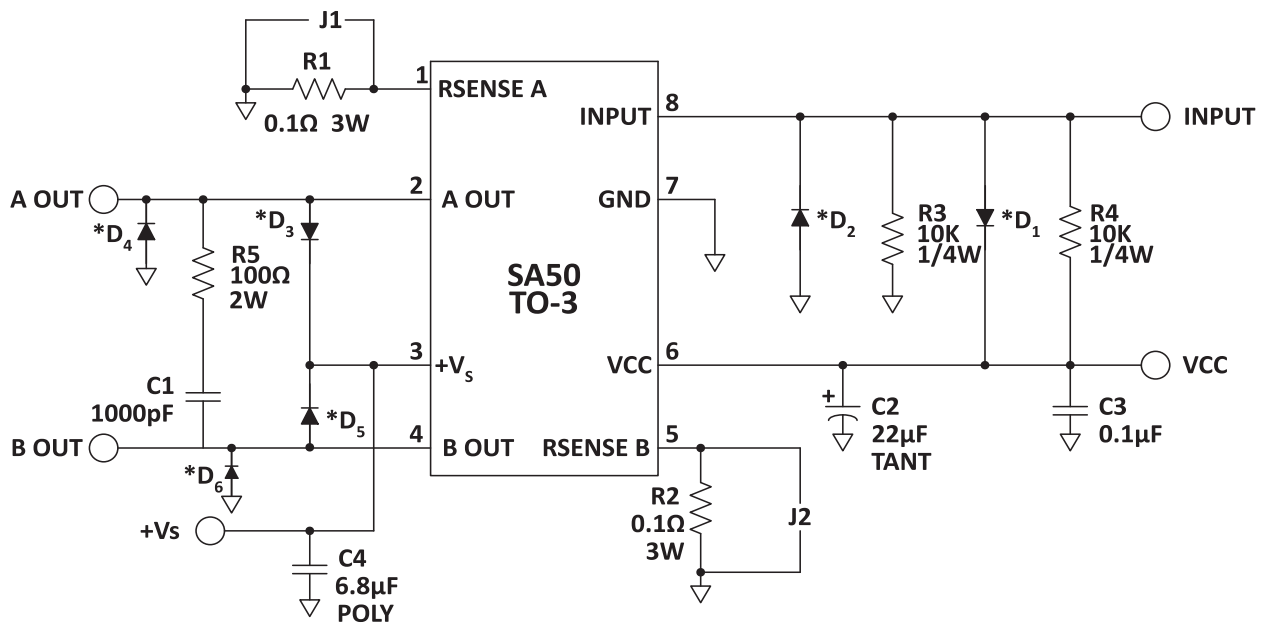
APPLICABLE PARTS (SOLD SEPARATELY)

- SA50

INTRODUCTION

Fast, easy breadboarding of circuits using the SA50 are possible with the EVAL05 PC board. Mounting holes are provided and the provision for standard banana jacks simplifies connection and testing. Components are labeled on both sides of the board for ease in probing.

Figure 1: Equivalent Schematic



*D1 and D2 – Input Protection, high speed such as 1N4148.
 D3 through D6 – Flyback protection, high speed (<200nS).
 Solder as close to SA50 as possible
 These components do not have designations on the PC Board.

Figure 2: PCB

