

Evaluation Kit

APPLICABLE PARTS (SOLD SEPARATELY)

- PA162DK

INTRODUCTION

Fast and easy breadboarding of circuits using the PA162DK is possible with the EK68 evaluation kit. The EK68 includes the EVAL68 board. The use of EVAL68 allows for a large area of breadboarding space to work with while allowing for the surface mount installation of PA162DK. The PA162DK amplifier may be mounted directly to the EVAL68. The EK68 is designed for mounting of the PA162DK without the need to solder attach the device terminals. The HS33 heat sink is designed to hold the part in place while providing thermal control and electrical contact simultaneously. The obvious advantage is the ease of removal and replacement of the PA162DK as required. External connection to the evaluation board can be made via the terminals at the edge of the circuit board.

Figure 1: PCB Layout

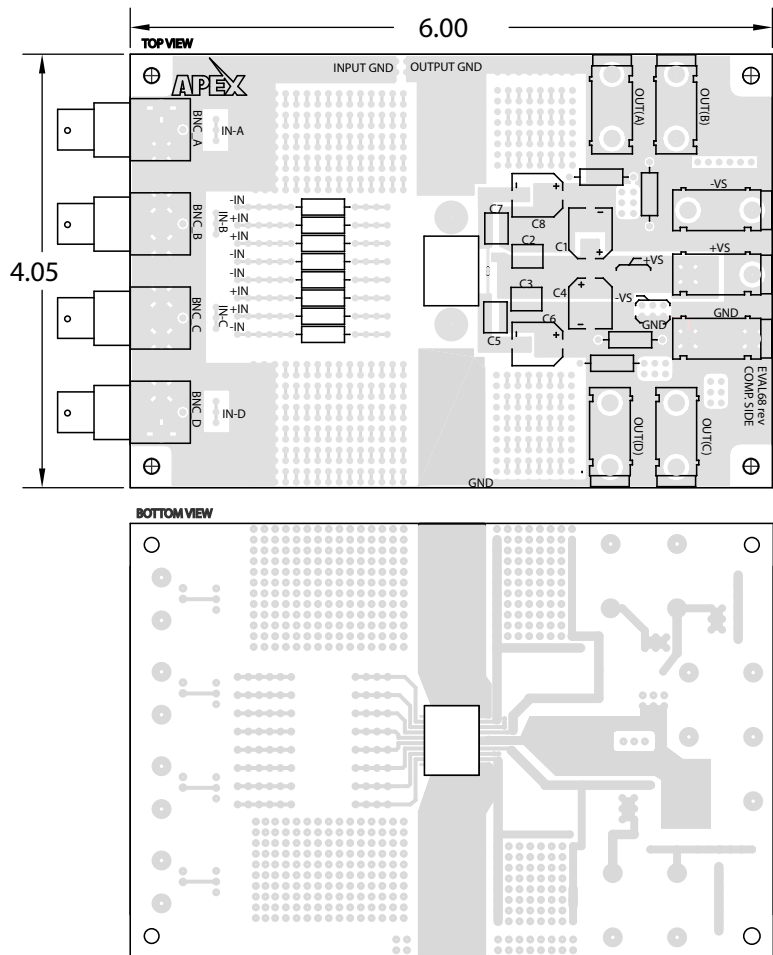
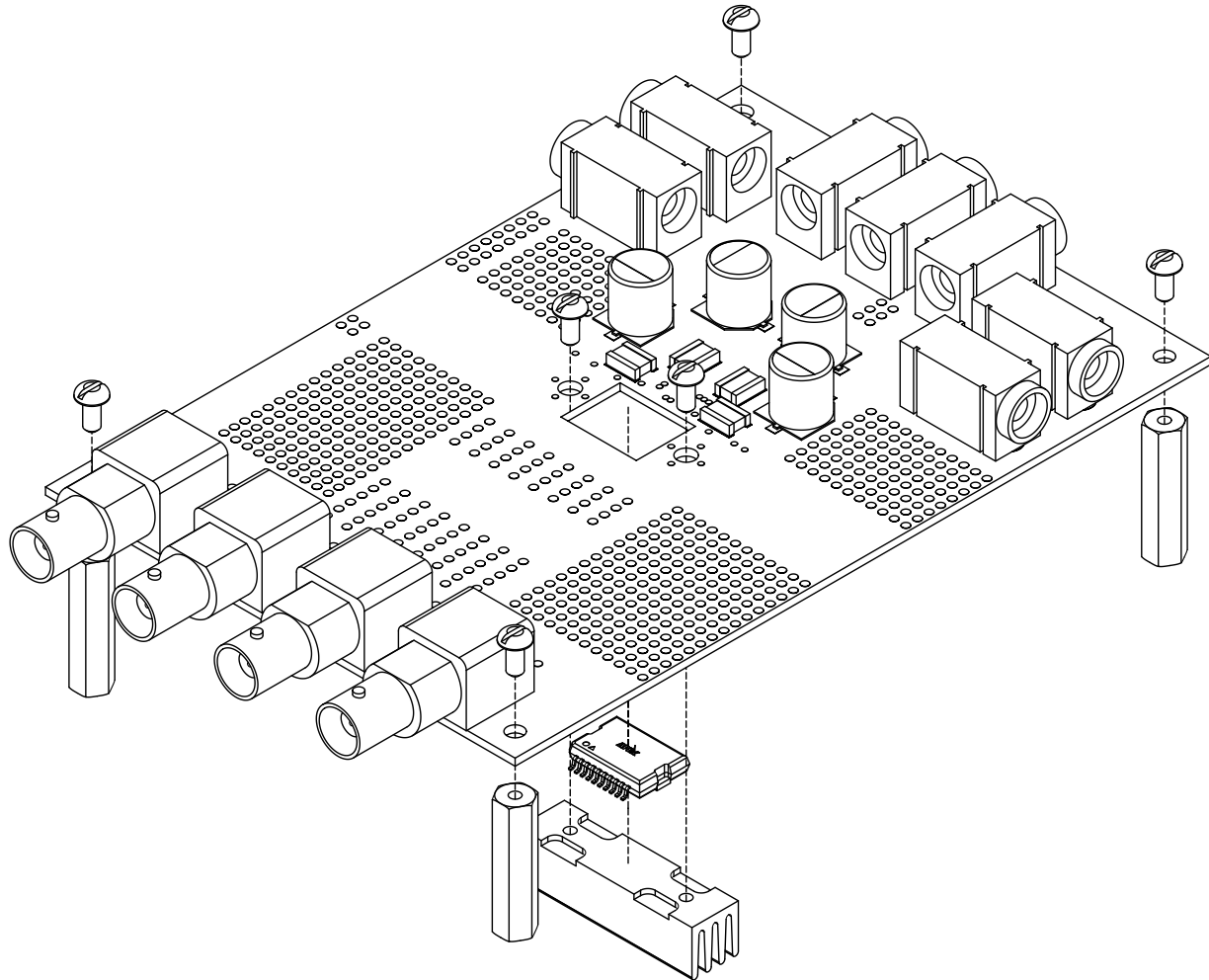


Figure 2: Assembly Diagram for EK68



PARTS LIST

Reference	Part #	Description	QTY
	EVAL68	Evaluation Board, PA162DK	1
C ₁ , C ₄ , C ₈ , C ₆	PCE3927CT-ND	CAP, 47uF, 50V	4
C ₂ , C ₃ , C ₅ , C ₇	1825B105K201NX	Cap, 200V, 1uF, Ceramic	4
	HS33	Heat Sink	1
	146510CJ	BNC Jacks	4
	571-0100	Banana Jacks	4
	571-0500	Banana Jacks	3
	MS06	Mating Socket	4

Required #4 hardware and thermal grease not included.