

# Assembly Hardware



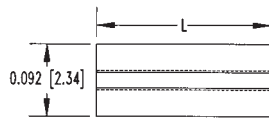
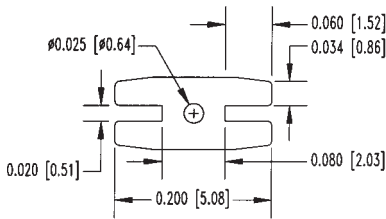
## Extruded, Self-Retaining LED



- For Use with All Rectangular LEDs
- Compatible with 2 & 3 Leaded Devices
- High Temperature version available by special order.
- See page 41 for ordering information.

### ERM Extruded, Self-Retaining LED Mounts

SERIES



#### Material Specifications:

Black PVC U.L. Rated 94V-0 materials.



Oxygen Rating Index: Over 28%

#### Standard Tolerances Extruded LED Mounts

Tolerances: O.D. ± .005 (.13), I.D. ± .005 (.13)

"L" Dim: .030 - .500 (0.76 -12.7) is ± .005 (.13)

"L" Dim: .505 - .750 (12.8-19.1) is ± .008 (.20)

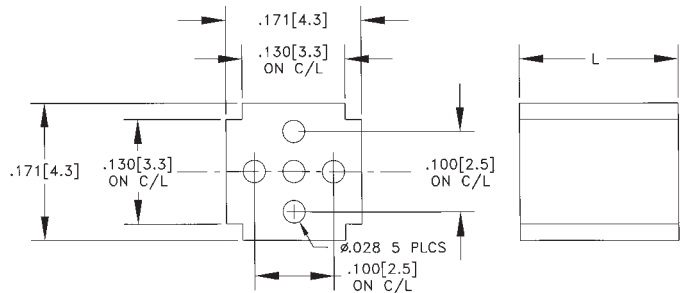
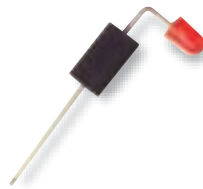
"L" Dim: .750 - 1.250 (19.2-21.8) is ± .015 (.38)

### ERB Extruded, Self-Retaining LED Mounts

SERIES



- Standard Lengths from .030" - 1.250" (2.3 - 23.0 mm) in .005" (.127mm) increments
- Designed to mount T-1 (3mm) & T-1¼ (5mm) LEDs in a vertical or right angle position.



PART NO.	LED TYPE	LEAD NO.	'L'
ERB-XXX	All types	2 OR 3	.030-.900 (0.76-23.0)

Example: ERB-250 "L" Dimension of 0.250"

Note: High temperature versions available upon request. Minor mechanical differences may exist.