

# ELEVATED SOCKETS

(2.54 mm) .100" PITCH • ESW/ESQ SERIES



## ESW/ESQ

### Mates:

TSW, MTSW, EW, MTLW, TSS, ZSS, TSM, DW, ZW, HW, TSSH, HTSS

### SPECIFICATIONS

#### Insulator Material:

Black Glass Filled Polyester

#### Contact Material:

Phosphor Bronze

#### Plating:

Au or Sn over 50 μ" (1.27 μm) Ni

#### Current Rating (ESW/TSW):

5.2 A per pin (2 pins powered)

#### Current Rating (ESQ/TSW):

5.7 A per pin (2 pins powered)

#### Voltage Rating:

515 VAC mated with TSW or ESQ

#### Operating Temp Range:

-55 °C to +125 °C with Gold  
-55 °C to +105 °C with Tin

#### Insertion Depth:

(3.68 mm) .145" to (6.35 mm) .250"

#### Max Cycles:

100 with 10 μ" (0.25 μm) Au

### PROCESSING

#### Lead-Free Solderable:

No, Lead Wave only

SERIES	1	NO. PINS PER ROW	LEAD STYLE	PLATING OPTION	ROW OPTION	OTHER OPTION
--------	---	------------------	------------	----------------	------------	--------------

**ESW**  
= Solder Tail

**ESQ**  
= Square Tail

01 thru 36

Specify **LEAD STYLE** from chart

**-L**  
= 10 μ" (0.25 μm) Gold contact, Matte Tin on tail

**-G**  
= 20 μ" (0.51 μm) Gold contact, Gold Flash on Balance

**-T**  
= Matte Tin (Not available with LIF contact)

**-S**  
= Single Row

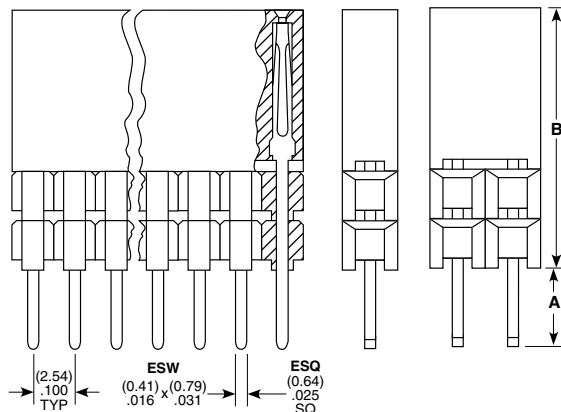
**-D**  
= Double Row

**-T**  
= Triple Row (ESQ only)

**-LL**  
= Locking Lead (Two leads per strip crimped. Not available with single row 1 or 2 positions)

**"XXX"**  
= Polarized

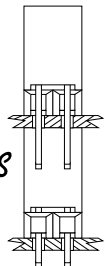
LEAD STYLE			
STANDARD INSERTION FORCE	LOW INSERTION FORCE	A	B
-12	-37	(2.29) .090	(11.05) .435
-13	-38	(7.36) .290	
-23	-48	(4.83) .190	(13.59) .535
-33	-58	(2.29) .090	(16.13) .635
-14	-39	(12.19) .480	(11.05) .435
-24	-49	(9.65) .380	(13.59) .535
-34	-59	(7.11) .280	(16.13) .635
-44	-69	(4.57) .180	(18.67) .735



### APPLICATIONS



*Self Nesting Sockets*



(ESQ SERIES)

PC/104™ J1/P1 "Stackthrough" Connectors	
Standard Insertion Force	ESQ-132-14-G-D
Low Insertion Force	ESQ-132-39-G-D
PC/104™ J1 "Non-Stackthrough" Connectors	
Standard Insertion Force	ESQ-132-12-G-D
Low Insertion Force	ESQ-132-37-G-D
PC/104™ J2/P2 "Stackthrough" Connectors	
Standard Insertion Force	ESQ-120-14-G-D
Low Insertion Force	ESQ-120-39-G-D

PC/104 is a trademark of the PC/104 Consortium.

### ALSO AVAILABLE

MOQ Required

Other Platings

### Note:

Some lengths, styles and options are non-standard, non-returnable.