

# ELEVATED SOCKETS

(2.54 mm) .100" PITCH • ESW/ESQ SERIES



## ESW/ESQ

### Mates:

TSW, MTSW, EW, MTLW, TSS, ZSS, TSM, DW, ZW, HW, TSSH, HTSS

### SPECIFICATIONS

#### Insulator Material:

Black Glass Filled Polyester

#### Contact Material:

Phosphor Bronze

#### Plating:

Au or Sn over 50 μ" (1.27 μm) Ni

#### Current Rating (ESW/TSW):

5.2 A per pin (2 pins powered)

#### Current Rating (ESQ/TSW):

5.7 A per pin (2 pins powered)

#### Voltage Rating:

515 VAC mated with TSW or ESQ

#### Operating Temp Range:

-55 °C to +125 °C with Gold  
-55 °C to +105 °C with Tin

#### Insertion Depth:

(3.68 mm) .145" to (6.35 mm) .250"

#### Max Cycles:

100 with 10 μ" (0.25 μm) Au

### PROCESSING

#### Lead-Free Solderable:

No, Lead Wave only

| SERIES | 1 | NO. PINS PER ROW | LEAD STYLE | PLATING OPTION | ROW OPTION | OTHER OPTION |
|--------|---|------------------|------------|----------------|------------|--------------|
|--------|---|------------------|------------|----------------|------------|--------------|

**ESW**  
= Solder Tail

**01 thru 36**

Specify **LEAD STYLE** from chart

**-L**  
= 10 μ" (0.25 μm) Gold contact, Matte Tin on tail

**-S**  
= Single Row

**-LL**  
= Locking Lead (Two leads per strip crimped. Not available with single row 1 or 2 positions)

**ESQ**  
= Square Tail

**-G**  
= 20 μ" (0.51 μm) Gold contact, Gold Flash on Balance

**-D**  
= Double Row

**-T**  
= Triple Row (ESQ only)

**"XXX"**  
= Polarized

**-T**  
= Matte Tin (Not available with LIF contact)

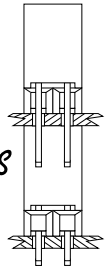
| LEAD STYLE               |                     |              |              |
|--------------------------|---------------------|--------------|--------------|
| STANDARD INSERTION FORCE | LOW INSERTION FORCE | A            | B            |
| -12                      | -37                 | (2.29) .090  | (11.05) .435 |
| -13                      | -38                 | (7.36) .290  |              |
| -23                      | -48                 | (4.83) .190  | (13.59) .535 |
| -33                      | -58                 | (2.29) .090  | (16.13) .635 |
| -14                      | -39                 | (12.19) .480 | (11.05) .435 |
| -24                      | -49                 | (9.65) .380  | (13.59) .535 |
| -34                      | -59                 | (7.11) .280  | (16.13) .635 |
| -44                      | -69                 | (4.57) .180  | (18.67) .735 |



### APPLICATIONS



*Self Nesting Sockets*



(ESQ SERIES)

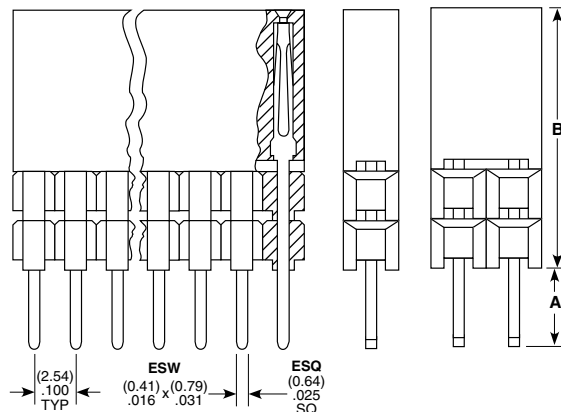
### ALSO AVAILABLE

MOQ Required

Other Platings

### Note:

Some lengths, styles and options are non-standard, non-returnable.



| PC/104™ J1/P1 "Stackthrough" Connectors  |                |
|--|----------------|
| Standard Insertion Force                 | ESQ-132-14-G-D |
| Low Insertion Force                      | ESQ-132-39-G-D |
| PC/104™ J1 "Non-Stackthrough" Connectors |                |
| Standard Insertion Force                 | ESQ-132-12-G-D |
| Low Insertion Force                      | ESQ-132-37-G-D |
| PC/104™ J2/P2 "Stackthrough" Connectors  |                |
| Standard Insertion Force                 | ESQ-120-14-G-D |
| Low Insertion Force                      | ESQ-120-39-G-D |

PC/104 is a trademark of the PC/104 Consortium.