

GENERAL DESCRIPTION

The EV3209DJ-00A is the evaluation board for the MP3209. The MP3209 is a current mode step up converter intended for small, low power applications. The MP3209 switches at 1.3MHz and allows the use of tiny, low cost capacitors and inductors to achieve a solution less than 1mm in height. Internal soft start results in small inrush current and extends battery life.

The MP3209 includes under-voltage lockout, current limiting, and thermal overload protection to prevent damage in the event of an output overload. The MP3209 is available in small 5-pin TSOT23 and 2mm x 2mm ultra-thin QFN 8-pin packages.

ELECTRICAL SPECIFICATION

Parameter	Symbol	Value	Units
Input Voltage	V_{IN}	2.5 to 6	V
Output Voltage	V_{OUT}	15	V

FEATURES

- 2.5V to 6V Input Voltage Range
- On Board Power MOSFET
- Uses Tiny Capacitors and Inductors
- 1.3MHz Fixed Switching Frequency
- Internally Compensated
- Internal Soft-Start
- Operates with Input Voltage as Low as 2.5V and Output Voltage as High as 22V
- UVLO, Thermal Shutdown
- Internal Current Limit
- Available in TSOT23-5 and Ultra-Thin 2x2 QFN Packages

APPLICATIONS

- Cell Phones
- External Modems
- Small LCD Displays
- OLED Drivers

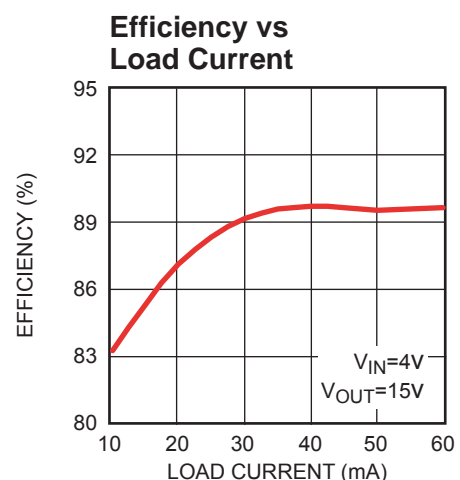
"MPS" and "The Future of Analog IC Technology" are Registered Trademarks of Monolithic Power Systems, Inc.

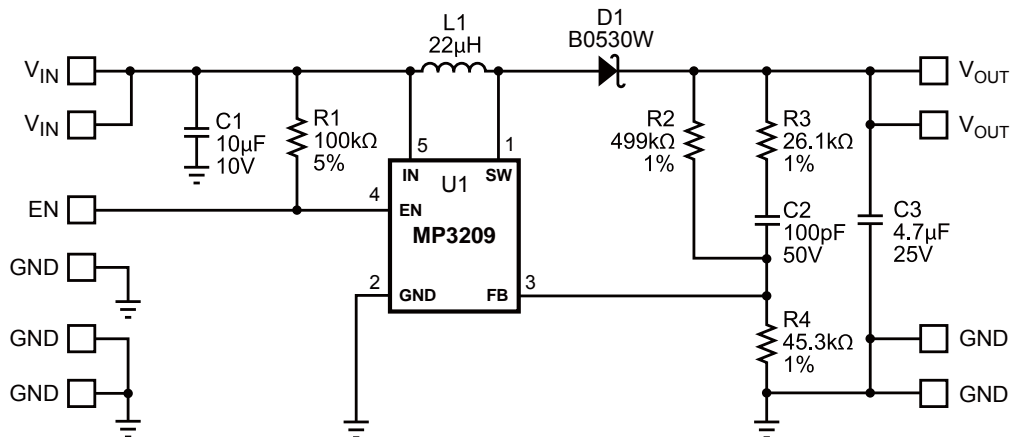
EV3209DJ-00A EVALUATION BOARD



Dimensions (1.6" by 1.8" X x 1.8" Y x 0.4" Z)

Board Number	MPS IC Number
EV3209DJ-00A	MP3209DJ



EVALUATION BOARD SCHEMATIC

EV3209DJ-00A BILL OF MATERIALS

Qty	Ref	Value	Description	Package	Manufacturer	Manufacturer P/N
1	C1	10µF	Ceramic Cap., 10V, X5R	1210	TDK	C3225X5R1A106K
1	C3	4.7µF	Ceramic Cap., 25V, X7R	1210	TDK	C3225X7R1E475M
1	C2	100pF	Ceramic Cap., 50V, COG	0603	TDK	C16-8COG1H101J
1	L1	22µH	22µH, 0.49A, SMD	SMD	TDK	VLCF4018-220MR49-2
1	D1	B0530W	Schottky Diode 30V,0.5A	SOD-123	Diodes Inc	B0530W
1	R1	100k	Film Res., 5%	0603	Royalohm	0603J0104T5E
1	R2	499k	Film Res., 1%	0603	Yageo	RC0603FR-07499KL
1	R3	26.1k	Film Res., 1%	0603	Yageo	RC0603FR-0726K1L
1	R4	45.3k	Film Res., 1%	0603	Yageo	RC0603FR-0745K3L
1	U1	MP3209DJ	Step-Up Converter	SOT23-5	MPS	MP3209DJ-R16

PRINTED CIRCUIT BOARD LAYOUT

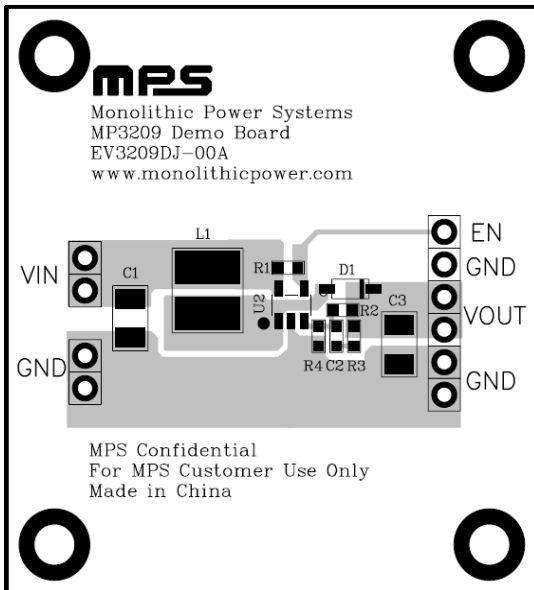


Figure 1—Top Layer

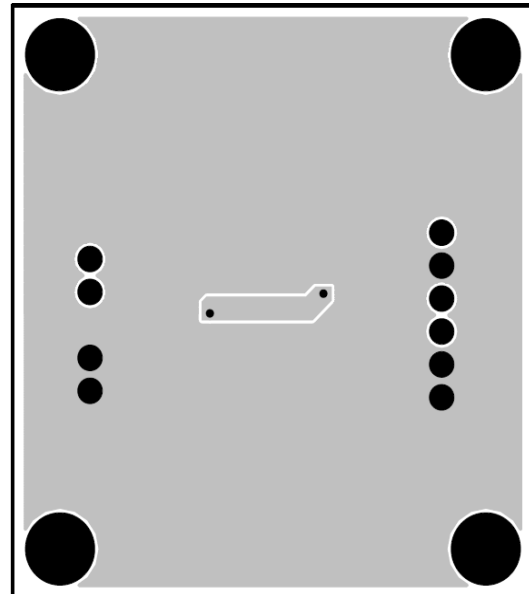


Figure 2—Bottom Layer