



# EV6540A-U-00A

## 5.5V to 35V, Three-Phase Brushless DC Motor Driver Evaluation Board

### DESCRIPTION

The EV6540A-U-00A is an evaluation board for the MP6540A, a three-phase BLDC motor driver.

It operates from a supply voltage of up to 35V. It integrates 3 half bridges consisting of 6 N-channel Power MOSFETs. The rotor position information is provided by the Hall sensors assembled in the motor and the driving control signals are generated by the external controller, such as MCU, FPGA, etc.

### ELECTRICAL SPECIFICATIONS

Parameter	Symbol	Value	Units
Input Voltage	VIN	5.5 - 35	V
VREF Voltage	VREF	3.3 or 5	V

### FEATURES

- Wide 5.5V to 35V Input Voltage Range
- Low On-Resistance
- Integrated Bi-directional Current Sense Amplifiers
- Support 100% Duty Cycle Operation
- HS/LS Logic Input
- OCP, OTP
- Fault Indication Output

### APPLICATIONS

- 3-Phase Brushless DC Motors and Permanent Magnet Synchronous Motors
- Power Drills
- Impact Drivers

All MPS parts are lead-free, halogen-free, and adhere to the RoHS directive. For MPS green status, please visit the MPS website under Quality Assurance. "MPS" and "The Future of Analog IC Technology" are registered trademarks of Monolithic Power Systems, Inc.

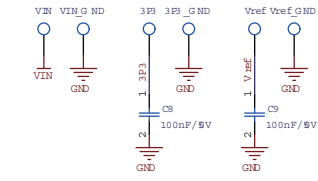
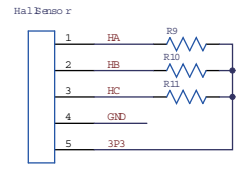
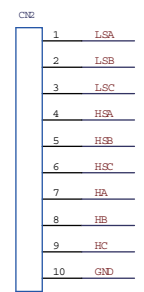
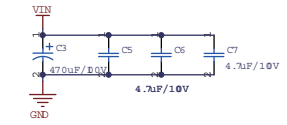
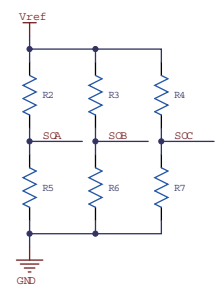
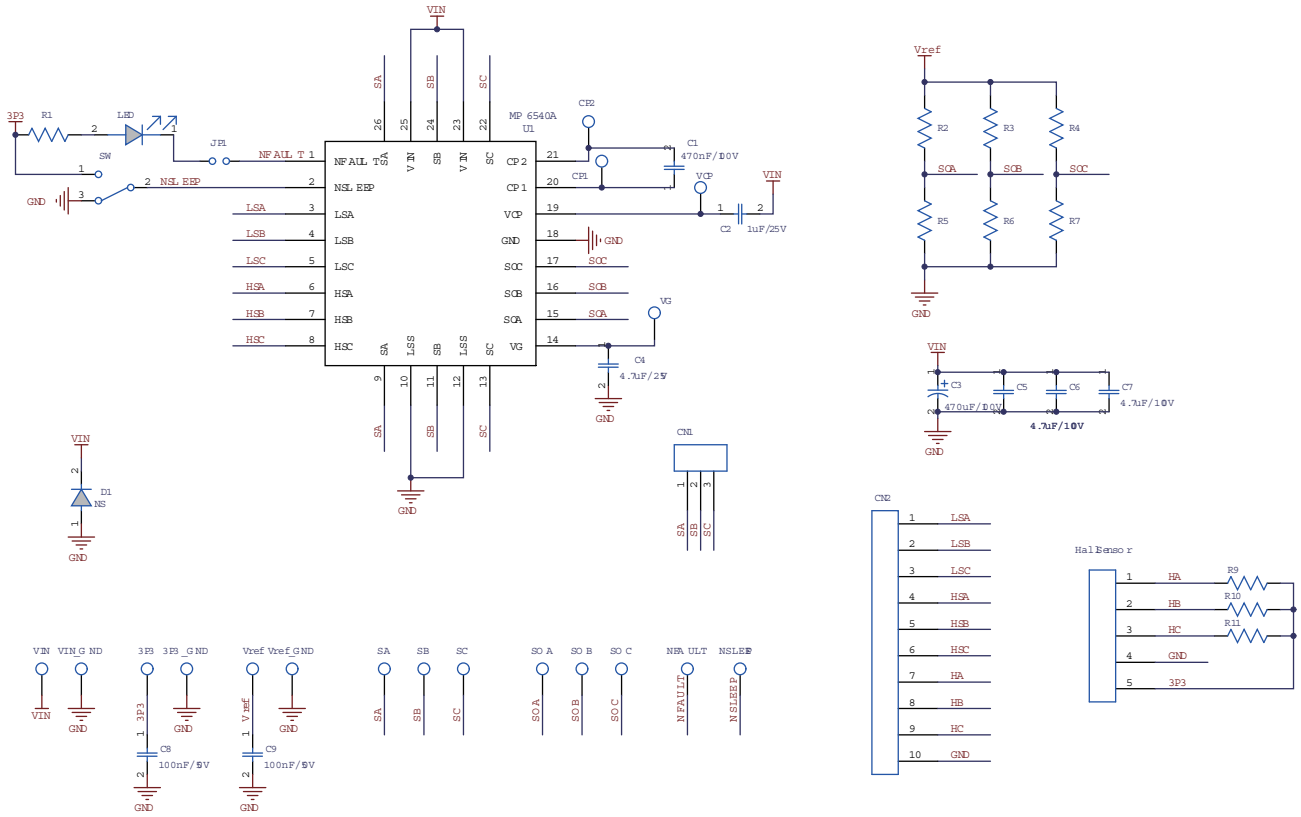
## EV6540A-U-00A EVALUATION BOARD



(L x W x H) 2" x 2" x 0.4"  
(5cm x 5cm x 1cm)

Board Number	MPS IC Number
EV6540A-U-00A	MP6540AGU

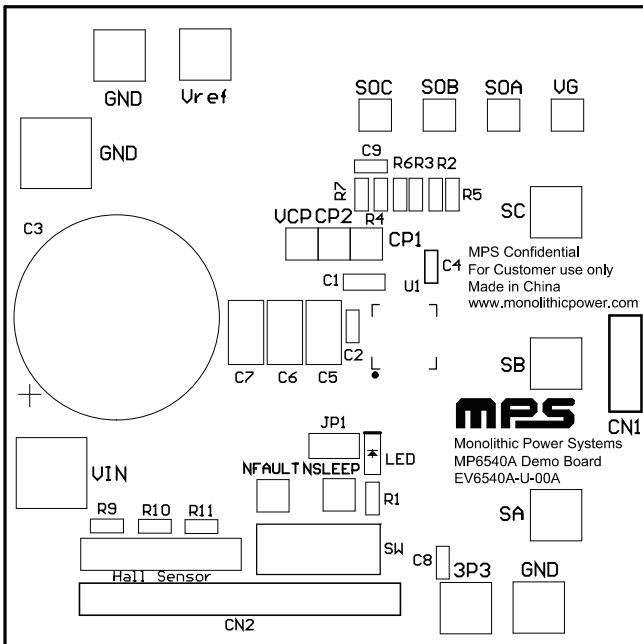
# EVALUATION BOARD SCHEMATIC



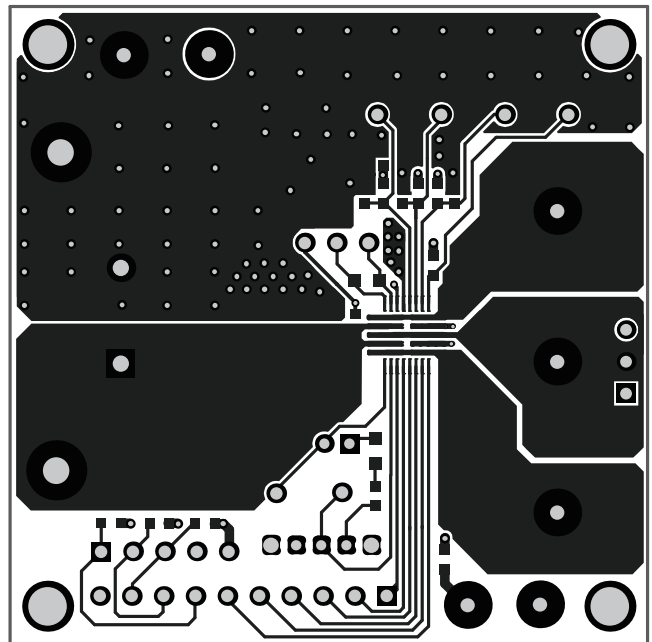
**EV6540A-U-00A BILL OF MATERIALS**

Qty	RefDes	Value	Description	Package	Manufacturer	Manufacturer P/N
1	R1	499	Film Resistor; 1%	0603	Yageo	RC0603FR-07499RL
6	R2, R3, R4, R5, R6, R7	4.99K	Film Resistor; 1%	0603	Yageo	RC0603FR-074K99L
3	R9, R10, R11	1K	Film Resistor; 1%	0603	Yageo	RC0603FR-071KL
1	C1	470nF/100V	Ceramic Capacitor; 100V; X7R;	0805	muRata	GRM21BR72A474KA73L
1	C2	1 $\mu$ F/25V	Ceramic Capacitor; 25V; X7R	0603	muRata	GRM188R71E105KA12D
1	C3	470uF/100V	Electrolytic Capacitor; 100V;	DIP	江海	CD263-100V470
1	C4	4.7 $\mu$ F/25V	Ceramic Capacitor; 25V; X6S	0603	muRata	GRM188C81E475KE11D
3	C5, C6, C7	4.7 $\mu$ F/100V	Ceramic Capacitor; 100V; X7S	1210	muRata	GRJ32DC72A475KE11L
2	C8, C9	100nF/50V	Ceramic Capacitor; 50V; X7R	0603	Murata	GCJ188R71H104KA12D
1	LED	BL- HUE35A- AV-TRB	LED;红光;	0805	Bai Hong	2012SURC-11
2	CN1, CP1, CP2, VCP		CONN/3PIN/2.54M M			
1	CN2		CONN/10PIN/2.54M M			
1	Hall Sensor		CONN/5PIN/2.54M M			
1	SW		Button	DIP		SS-12D01EG4
1	JP1		CONN/2PIN/2MM			
1	JP1		2mm Short Jumper			
6	NFAULT, NSLEEP, SOA, SOB, SOC, VG		Test Point			
2	VIN, VIN_GND		2.0 公针			
7	3P3, 3P3_GND , SA, SB, SC, Vref, Vref_GND		1.0 公针			
1	D1	NS				
1	U1	MP6540A	Three-phase BLDC Motor Driver	QFN26 (5x5mm)	MPS	MP6540AGU

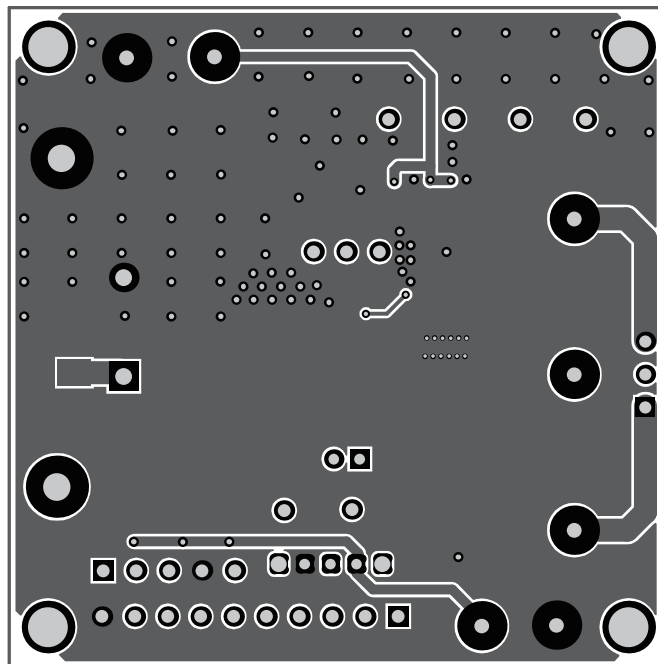
**PRINTED CIRCUIT BOARD LAYOUT**



**Figure 1—Top Silk Layer**



**Figure 2—Top Layer**



**Figure 3—Bottom Layer**