

DESCRIPTION

EV8007-V-00D Evaluation Board is designed to demonstrate the capability of MP8007's primary-side regulate fly-back function. This board supports IEEE 802.3af PoE compliant Powered Device with PD interface and flyback power converter. It is targeted for isolated 13W PoE application.

The PD interface has all the functions of IEEE 802.3af, including detection, classification, inrush current, operation current limit as well as 100V Hot-swap MOSFET. The DCDC converter uses fixed peak current and variable frequency discontinuous conduction mode (DCM) to regulate constant output voltage.

The MP8007 is available in QFN-28 (4mmX5mm) package.

ELECTRICAL SPECIFICATIONS

Parameter	Symbol	Value	Units
Input voltage	V_{IN}	37-57	V
Adapter Voltage	$V_{ADAPTOR}$	24	V
Output voltage	V_{OUT}	5	V
Output current	I_{OUT}	2.5 ⁽¹⁾	A

Notes:

(1) When using 24V adapter input, the maximum output current will be lower than 2.5A, it is limited by transformer design.

FEATURES

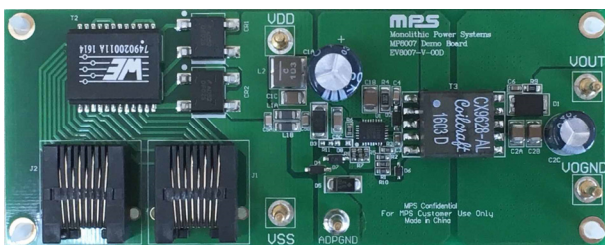
- Primary-side Regulate Flyback without Opto-coupler Feedback
- Integrated 180V Switching Power MOSFET
- Internal 80V Startup Circuit
- Up to 3A Programmable Current Limit
- Discontinuous Conduction Work Mode
- Include OLP, OVP, Open Circuit and Thermal Protection
- Minimal External Components Count
- Available in QFN-28 4mmx5mm Package

APPLICATIONS

- Security Camera
- VoIP Phones
- WLAN Access Points
- General Flyback Converter

All MPS parts are lead-free, halogen free, and adhere to the RoHS directive. For MPS green status, please visit MPS website under Quality Assurance. "MPS" and "The Future of Analog IC Technology" are Registered Trademarks of Monolithic Power Systems, Inc.

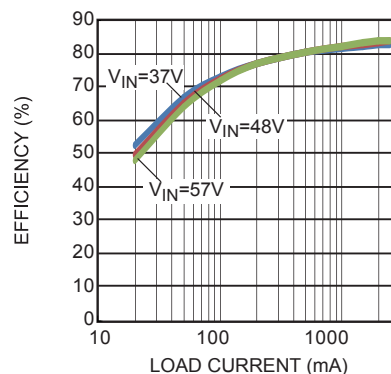
EV8007-V-00D EVALUATION BOARD



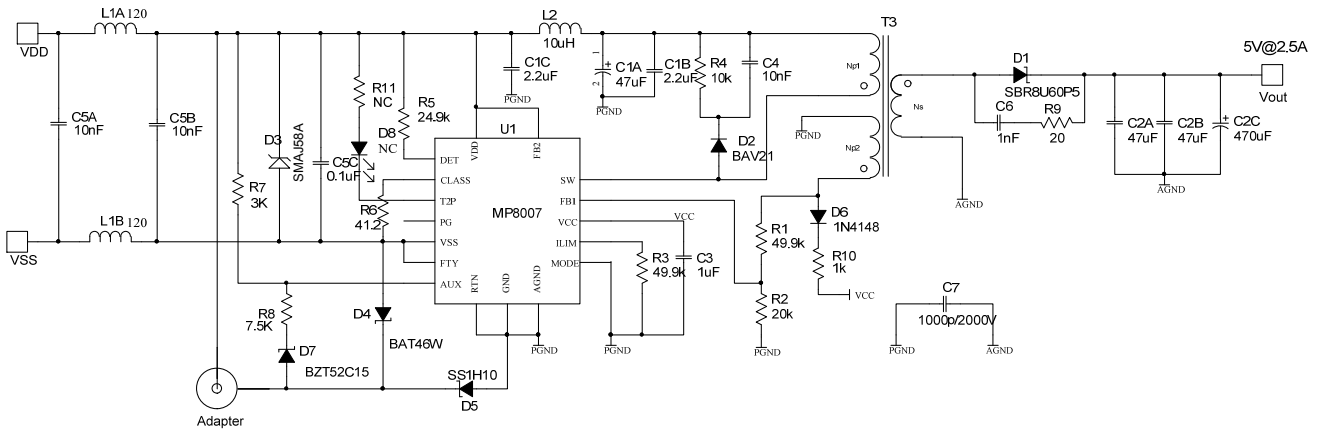
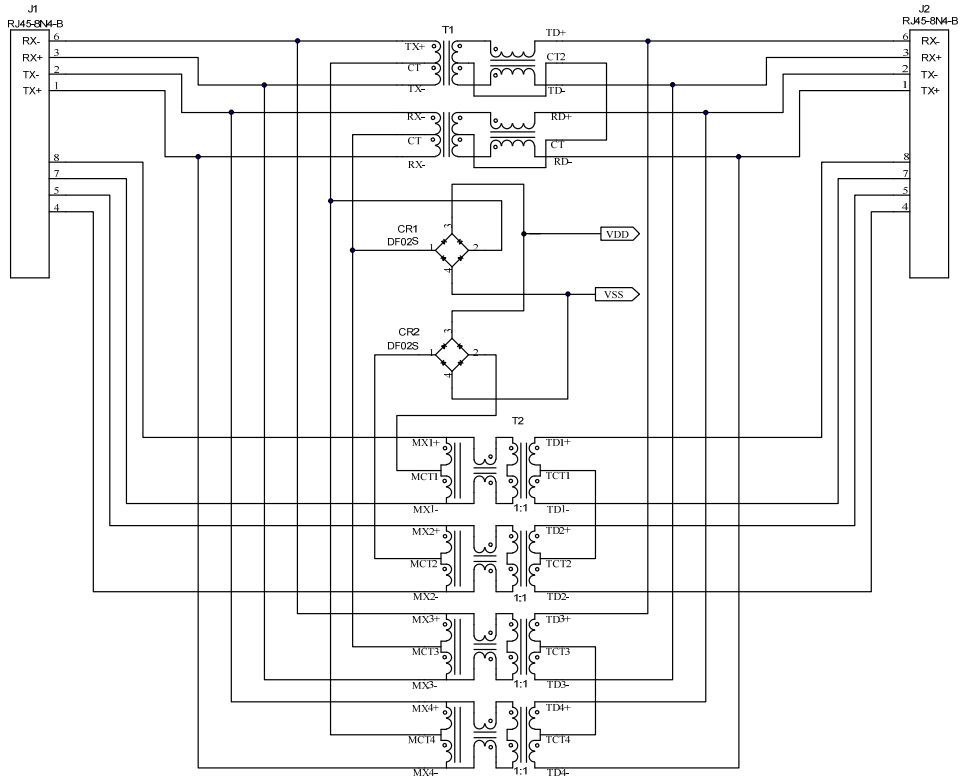
(L x W x H) (11.5cm x 4.5cm x 1.5cm)

Board Number	MPS IC Number
EV8007-V-00D	MP8007

Efficiency vs. Load Current



EVALUATION BOARD SCHEMATIC



EV8007-V-00C BILL OF MATERIALS

Qty	Ref	Value	Description	Package	Manufacturer	Part Number
1	C1A	47 μ F	47 μ F 100V CD284 E-Cap. 10X12.5mm	DIP	JiangHai	47 μ F/100V
2	C1B,C1C	2.2 μ F	Ceramic Cap, 100V, X7R	1210	MuRata	GRM32ER72A225KA35L
2	C2A,C2B	47 μ F	Ceramic Cap.,10V,X7R	1210	MuRata	GRM32ER71A476KE15L
1	C2C	470 μ F	470 μ F 16V CD284 E-Cap,8X12.5mm	DIP	JiangHai	470 μ F/16V
1	C3	1 μ F	Ceramic Cap,10V,X7R	0603	MuRata	GRM188R71A105KA61D
3	C4,C5A,C5B	10nF	Ceramic Cap,100V,X7R	0805	MuRata	GRM216R72A103KA01D
1	C5C	0.1 μ F	Ceramic Cap. 100V, X7R	1206	MuRata	GRM319R72A104KA01D
1	C6	1nF	Ceramic Cap,100V,X7R	0603	MuRata	GRM188R72A102KA01D
1	C7	1nF	Ceramic Cap. 2000V X7R	1808	MuRata	GR442QR73D102KW01L
2	R1,R3	49.9k	Film Res,1%	0603	ROYAL	RC0603FR-0749K9L
1	R2	20k	Film Res,1%	0603	ROYAL	RC0603FR-0720KL
1	R4	10k	Film Res,1%	1206	ROYAL	RC1206FR-0710KL
1	R5	24.9k	Film Res,1%	0603	ROYAL	RC0603FR-0724K9L
1	R6	41.2	Film Res,1%	0603	ROYAL	RC0603FR-0741R2L
1	R7	3k	Film Res,1%	0603	ROYAL	RC0603FR-073KL
1	R8	7.5k	Film Res,5%	0603	ROYAL	RC0603JR-077K5L
1	R9	20	Film Res,1%	0805	ROYAL	RC0805FR-0720RL
1	R10	1k	Film Res,1%	0603	ROYAL	RC0603FR-071KL
0	R11	NC				
1	D1	SBR8U60P5	8A 60V SUPER BARRIER RECTIFIER	POWERDI 5	Diodes	SBR8U60P5
1	D2	BAV21	Switching Diode 200V 200mW	SOD-123	Diodes	BAV21W-7-F
1	D3	SMAJ58A	TVS	SMA	Little fuse	SMAJ58A
1	D4	BAT46W	100V, DIODE	SOD-123	Diodes	BAT46W-7-F
1	D5	SS1H10	100V, SCHOTTKY	DO-214AC	VISHAY	SS1H10-E3/61T
1	D6	1N4148	Switching Diode 75V 250mW	SOD-323	Diodes	1N4148WS-7
1	D7	BZT52C15	Zener Diode, 15V	SOD-123	Diodes	BZT52C15
0	D8	NC				
0	T1	NC				
1	T2	749020011A	LAN-Transformer WE-LAN	SMD	Würth	749020011A

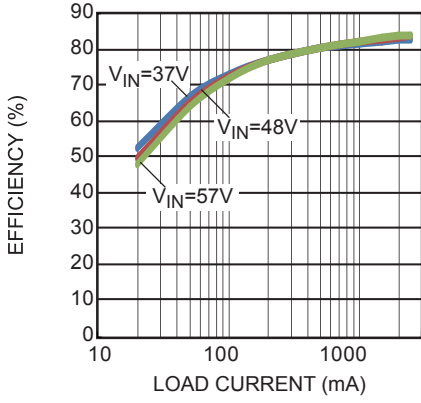
EV8007-V-00D BILL OF MATERIALS (continued)

Qty	Ref	Value	Description	Package	Manufacturer	Part Number
1	T3	43.7uH	Np:Ns:Na=20:4:5, Lp=43.7μH, Core=EP13	EP13	Coilcraft	CX9628-AL
2	L1A,L1B	120	120mΩ@100MHz	1206	Würth	742792113
1	L2	10uH	Isat=4.9A, Irms=4.9A		Coilcraft	XAL5050-103MEC
2	J1,J2	RJ45-8N4-B	RJ Jack / Signal Line EMI/RFI Filters 6 TRMN BRD/CBLE GRND 8 PIN Block Inductor	RJ45-TAB	Tyco	RJ45-8N4-B
2	CR1, CR2	DF02S	1.0A Surface Mount Glass Passivated Bridge Rectifier	DF-S	Diodes Inc	DF02S
1	U1	MP8007	IEEE 802.3af Compatible PSR Flyback PD Device	QFN-28	MPS	MP8007GV

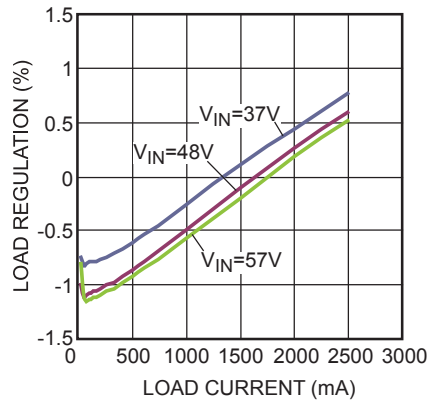
EVB TEST RESULTS

$V_{IN}=48V$, $V_{OUT}=5V$, $I_{OUT}=2.5A$, $T_A=25^\circ C$, unless otherwise noted.

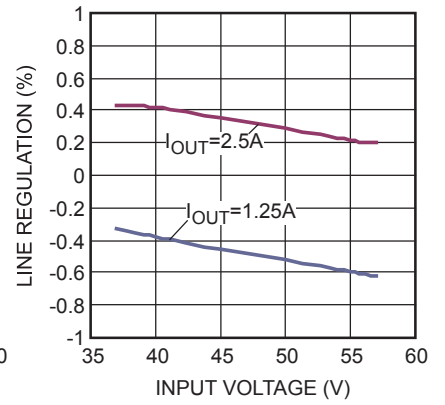
Efficiency vs. Load Current



Load Regulation



Line Regulation

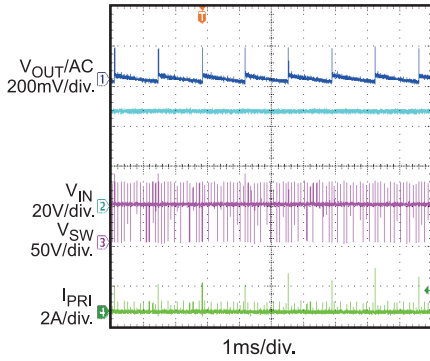


EVB TEST RESULTS (continued)

$V_{IN}=48V$, $V_{OUT}=5V$, $I_{OUT}=2.5A$, $T_A=25^{\circ}C$, unless otherwise noted.

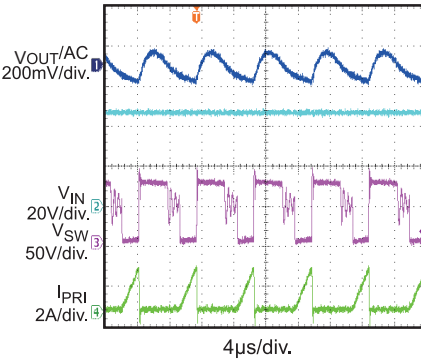
Steady State

$I_{OUT} = 20mA$



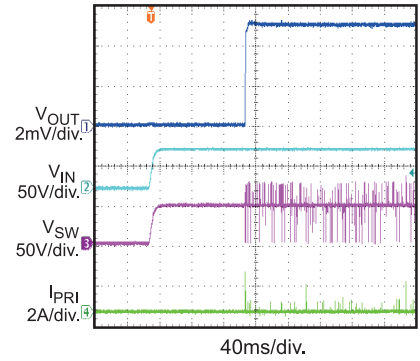
Steady State

$I_{OUT} = 2.5A$



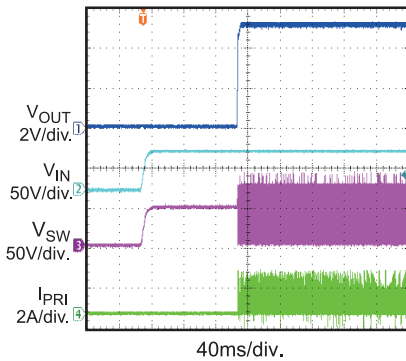
VIN Start-Up

$I_{OUT} = 20mA$



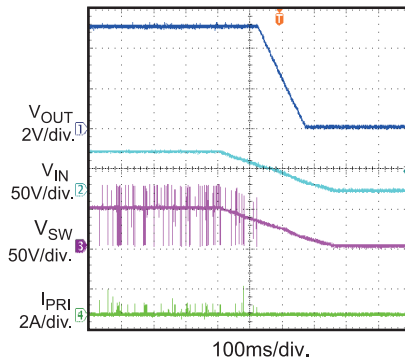
VIN Start-Up

$I_{OUT} = 2.5A$



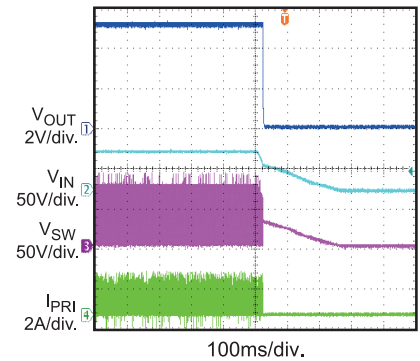
VIN Shutdown

$I_{OUT} = 20mA$



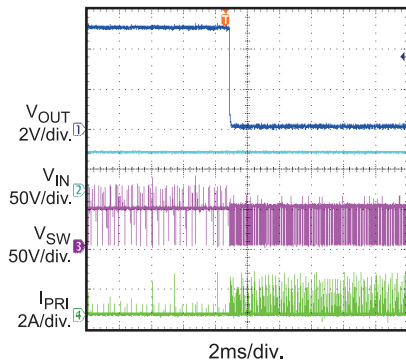
VIN Shutdown

$I_{OUT} = 2.5A$



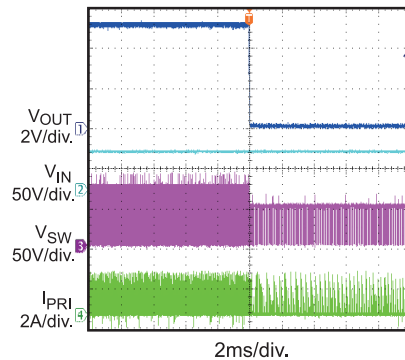
SCP Entry

$I_{OUT} = 20mA$



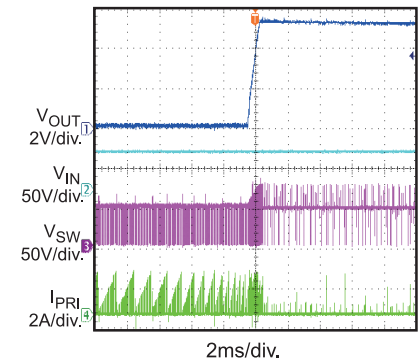
SCP Entry

$I_{OUT} = 2.5A$

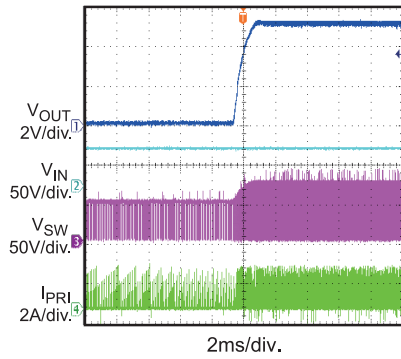
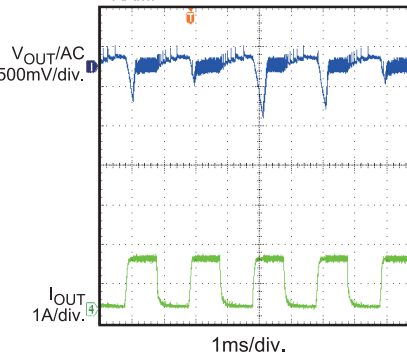
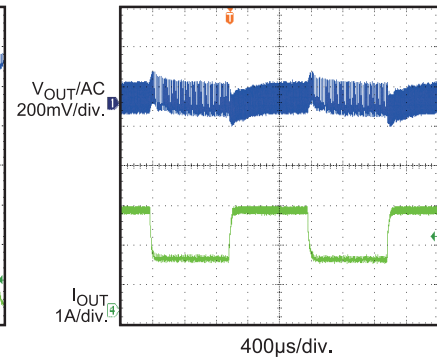
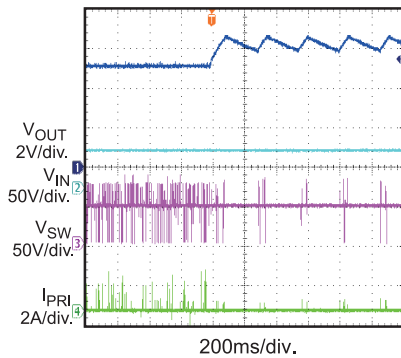
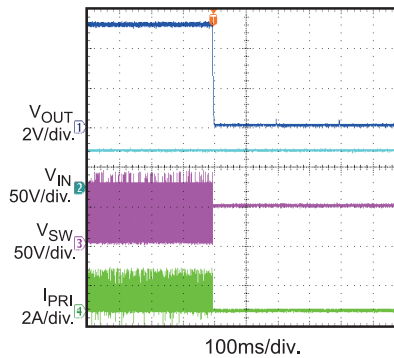
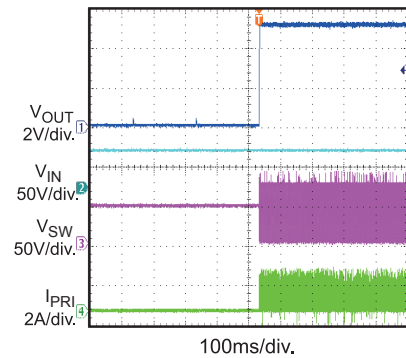


SCP Recovery

$I_{OUT} = 20mA$



EVB TEST RESULTS (continued)
 $V_{IN}=48V$, $V_{OUT}=5V$, $I_{OUT}=2.5A$, $T_A=25^{\circ}C$, unless otherwise noted.

SCP Recovery
 $I_{OUT} = 2.5A$

Load Transient
 $I_{OUT} = 20mA$ to $1.25A$,
 $I_{RAMP} = 25mA/\mu s$

Load Transient
 $I_{OUT} = 1.25A$ to $2.5A$,
 $I_{RAMP} = 25mA/\mu s$

OVP
 $I_{OUT} = 100mA$ to $2mA$

FB1 Open-Circuit Entry
 $I_{OUT} = 2.5A$

FB1 Open-Circuit Recovery
 $I_{OUT} = 2.5A$


PRINTED CIRCUIT BOARD LAYOUT

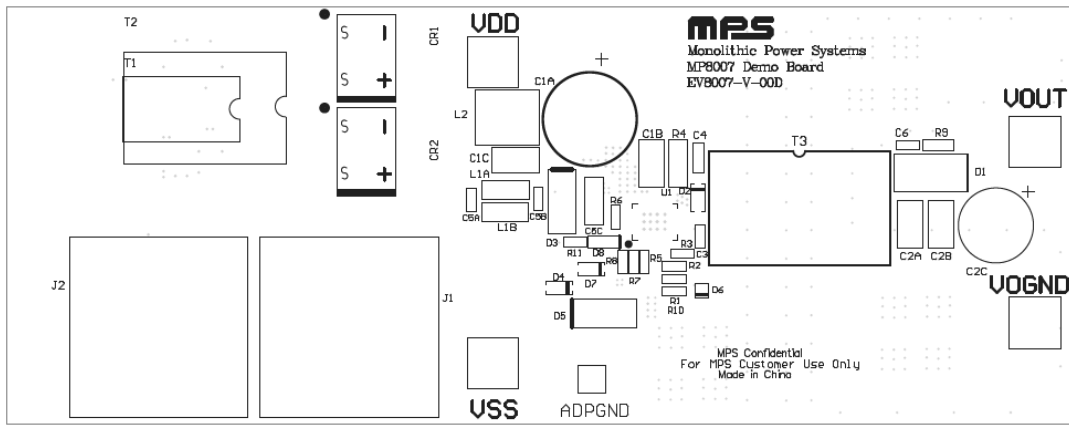


Figure 1: Top Silk Layer

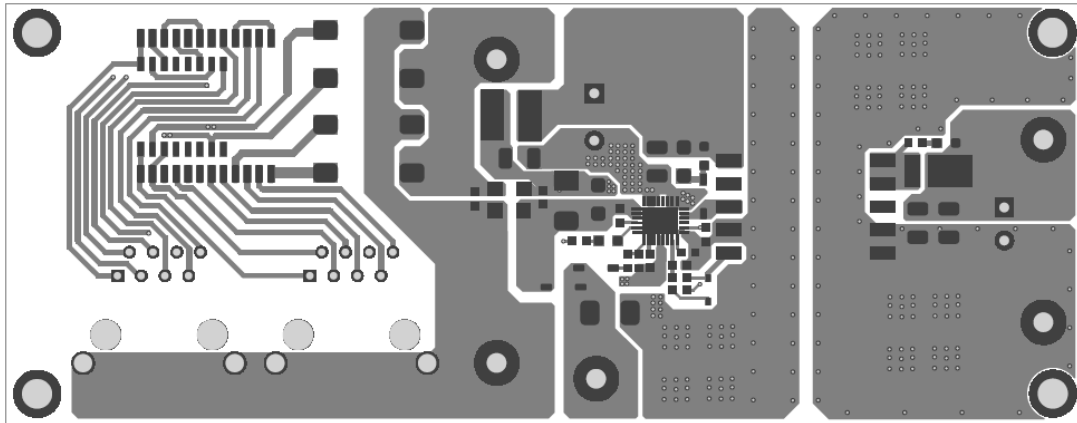


Figure 2: Top Layer

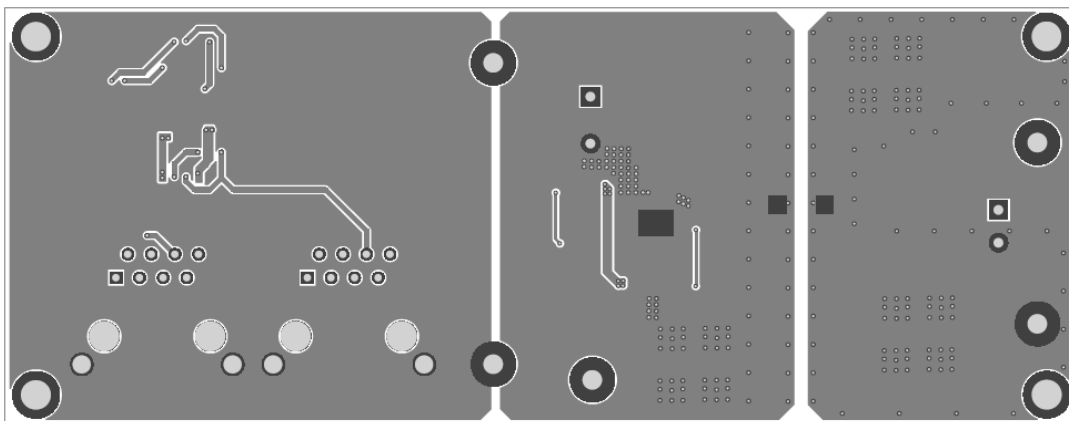


Figure 3: Bottom Layer