

Evaluation Board for Dual High Speed Differential Amplifiers

FEATURES

- Enables quick breadboarding/prototyping**
- User defined circuit configuration**
- Edge mounted SMA connector provisions**
- Easy connection to test equipment and other circuits**
- Two independent circuits enhance flexibility**

GENERAL DESCRIPTION

The EVAL-FDA-2CPZ-24 is designed to aid in the evaluation of dual high speed differential amplifiers. The EVAL-FDA-2CPZ-24 is a bare board (that is, there are no components soldered to the evaluation board) that enables users to quickly prototype a variety of differential amplifier circuits, which minimizes risk and reduces time to market. The EVAL-FDA-2CPZ-24 evaluation board supports any of the Analog Devices, Inc., dual high speed differential amplifiers in 4 mm × 4 mm, lead frame chip scale packages (LFCSP).

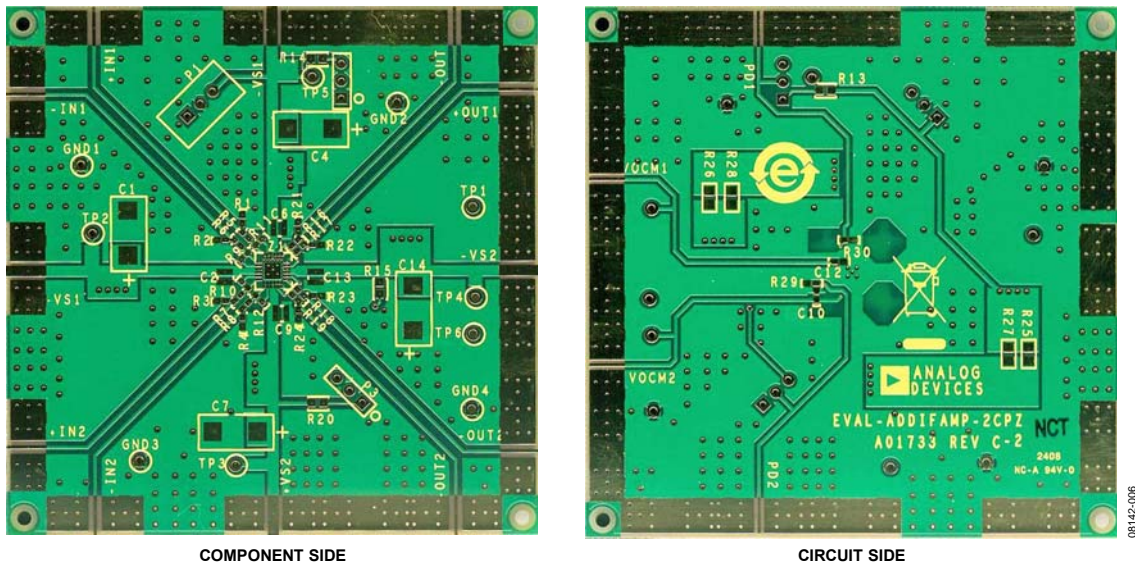
Figure 1 shows the component side and circuit side of the evaluation board. Figure 2 shows the evaluation board schematic.

The 4-layer evaluation board accepts edge mounted subminiature version A (SMA) connectors on both inputs and outputs, which allows efficient and quick connection to test equipment or other circuitry.

The evaluation board ground plane, component placement, and power supply bypassing are optimized for maximum circuit flexibility and performance. The evaluation board uses a variety of surface-mount technology (SMT) component case sizes: 0402, 0508, and 7343.

Figure 3 and Figure 5 show the evaluation board assembly drawings. Figure 4 and Figure 6 show the metal layout pattern for connecting the board to the operational amplifier and to the supporting circuitry.

DIGITAL PICTURE OF THE EVALUATION BOARD



NOTES

1. THE EVALUATION BOARD SILKSCREEN PART NUMBER LABELING ON YOUR BOARD MAY BE DIFFERENT FROM WHAT IS SHOWN HERE.

Figure 1. Component and Circuit Side of PCB

TABLE OF CONTENTS

Features	1	Evaluation Board Schematic and Artwork.....	3
General Description	1	Ordering Information.....	5
Digital Picture of the Evaluation Board.....	1	Bill of Materials.....	5
Revision History	2		

REVISION HISTORY

8/2016—Rev. B to Rev. C

Changed EB-D24CP44-2Z to EVAL-FDA-2CPZ-24 Throughout	
Changes to Table 1	5

1/2015—Rev. A to Rev. B

Changes to General Description Section	1
Added Ordering Information Section and Table 1	5

2/2010—Rev. 0 to Rev. A

Changes to General Description and Figure 1	1
---	---

7/2009—Revision 0: Initial Version

EVALUATION BOARD SCHEMATIC AND ARTWORK

08142-001

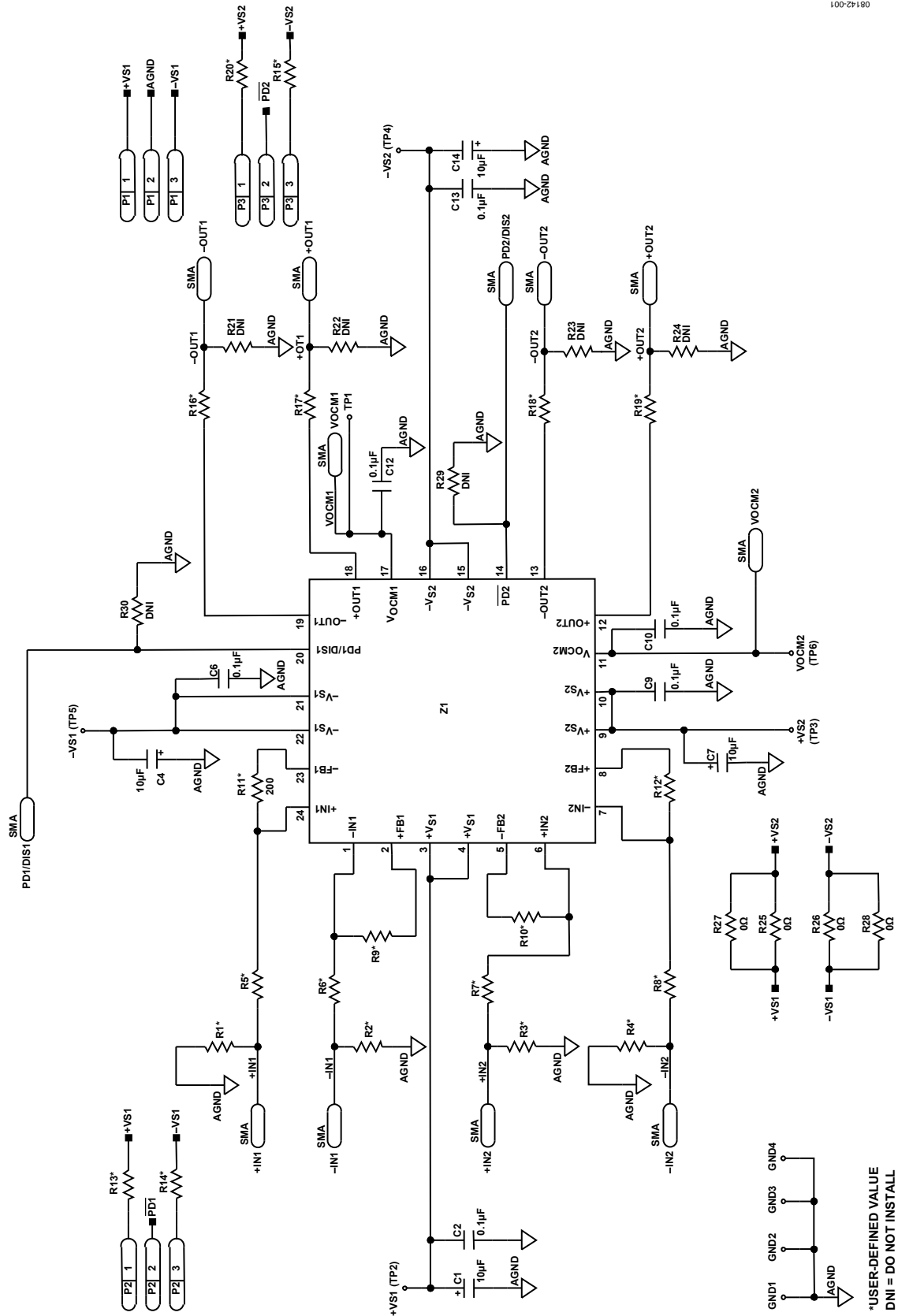


Figure 2. Dual Differential Amplifier Universal Evaluation Board Schematic

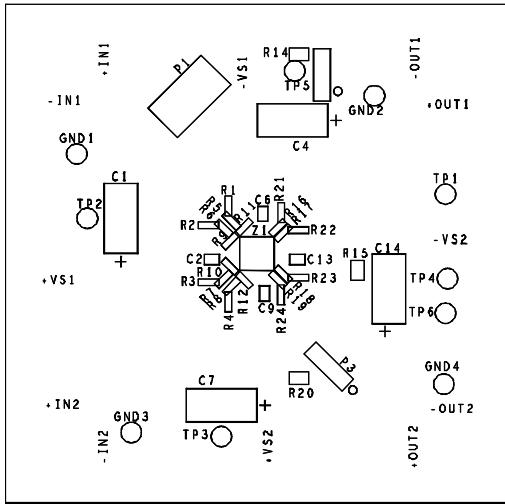


Figure 3. Board Assembly Drawing, Component Side

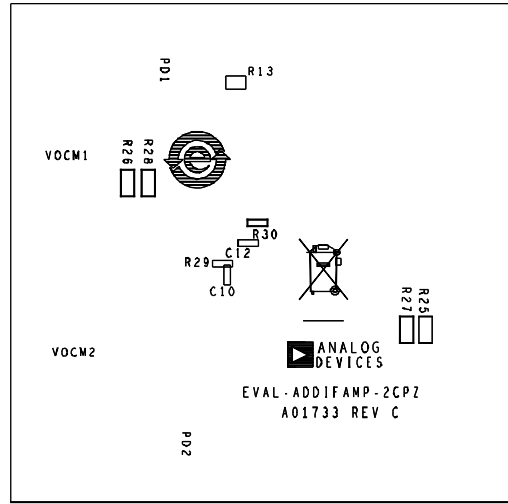


Figure 5. Board Assembly Drawing, Circuit Side

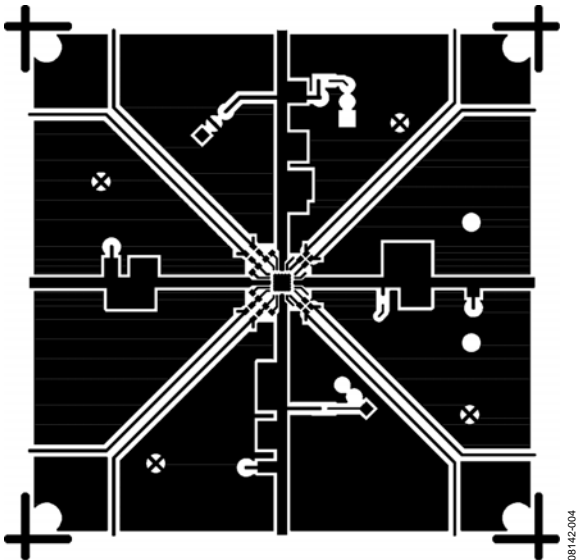


Figure 4. Board Layout Pattern, Component Side

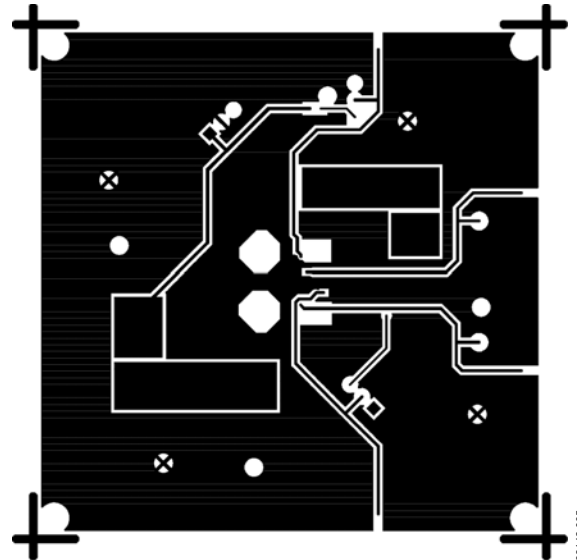


Figure 6. Board Layout Pattern, Circuit Side