

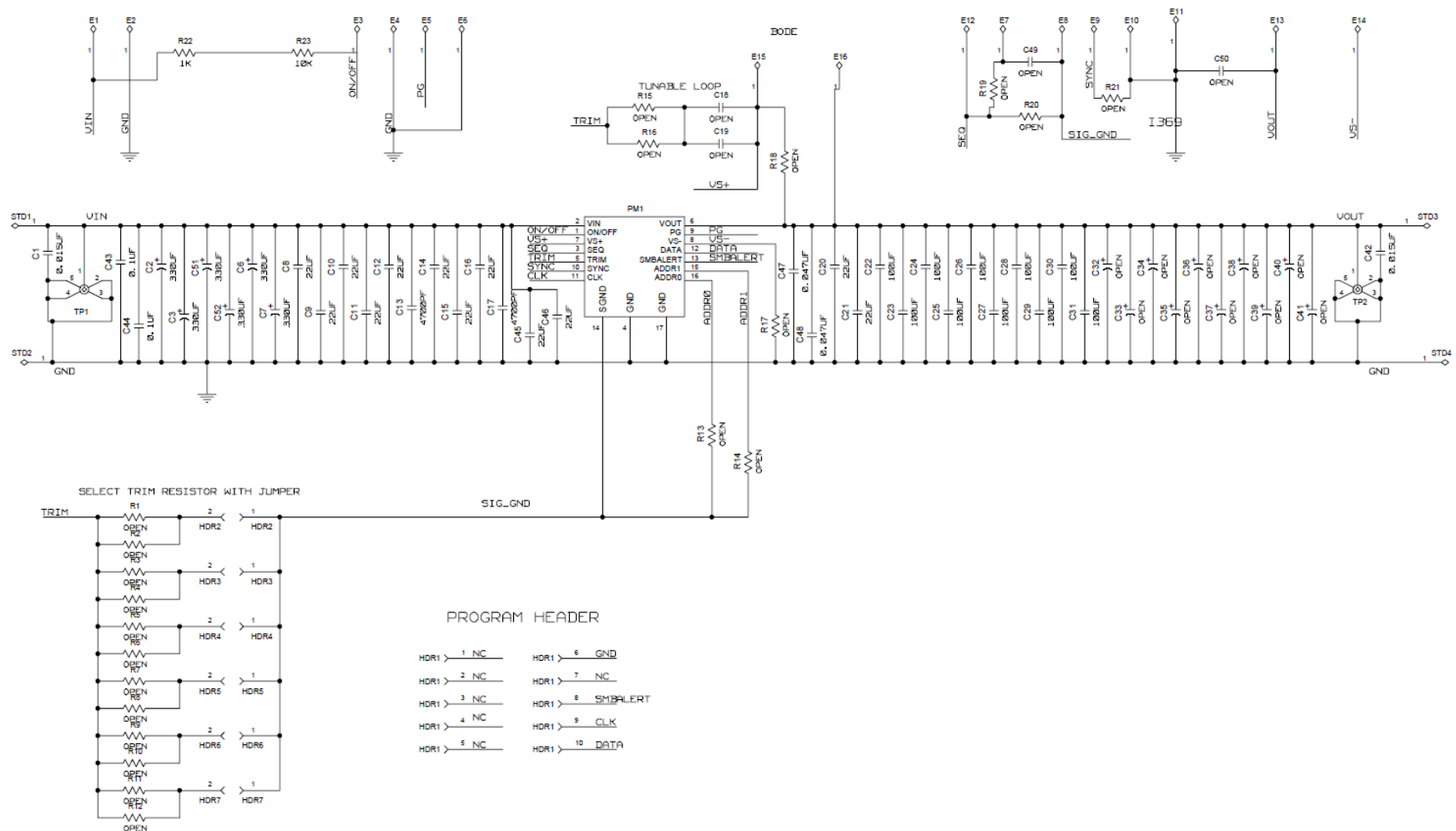
MicroDLynxII™ Series Evaluation Board Documentation

The UJT035 DLynxII™ series evaluation board (UT035 TESTFIXTURE) comes with an assembled module and test components. The specific combination of module and the board can be ordered through your sales representative

1. Schematics

Component values are for reference only; refer to the data sheet for appropriate values and pictures in this document for preinstalled component

Figure 1a. Schematic



Pre-Installed components for the UJT035 Test Fixture include input filtering [(2x0.1uF,16V) + 2x0.047uF16V], (6x22uF,16V), (1x470uF,16V)], output filtering [(2x0.1uF,16V), (8x47uF,6.3V)], R_{SENSE} resistors, R₁₇ & R₁₈ = 0 Ohms, Output Voltage Selector (0.9 to 3.3V) and some test points.

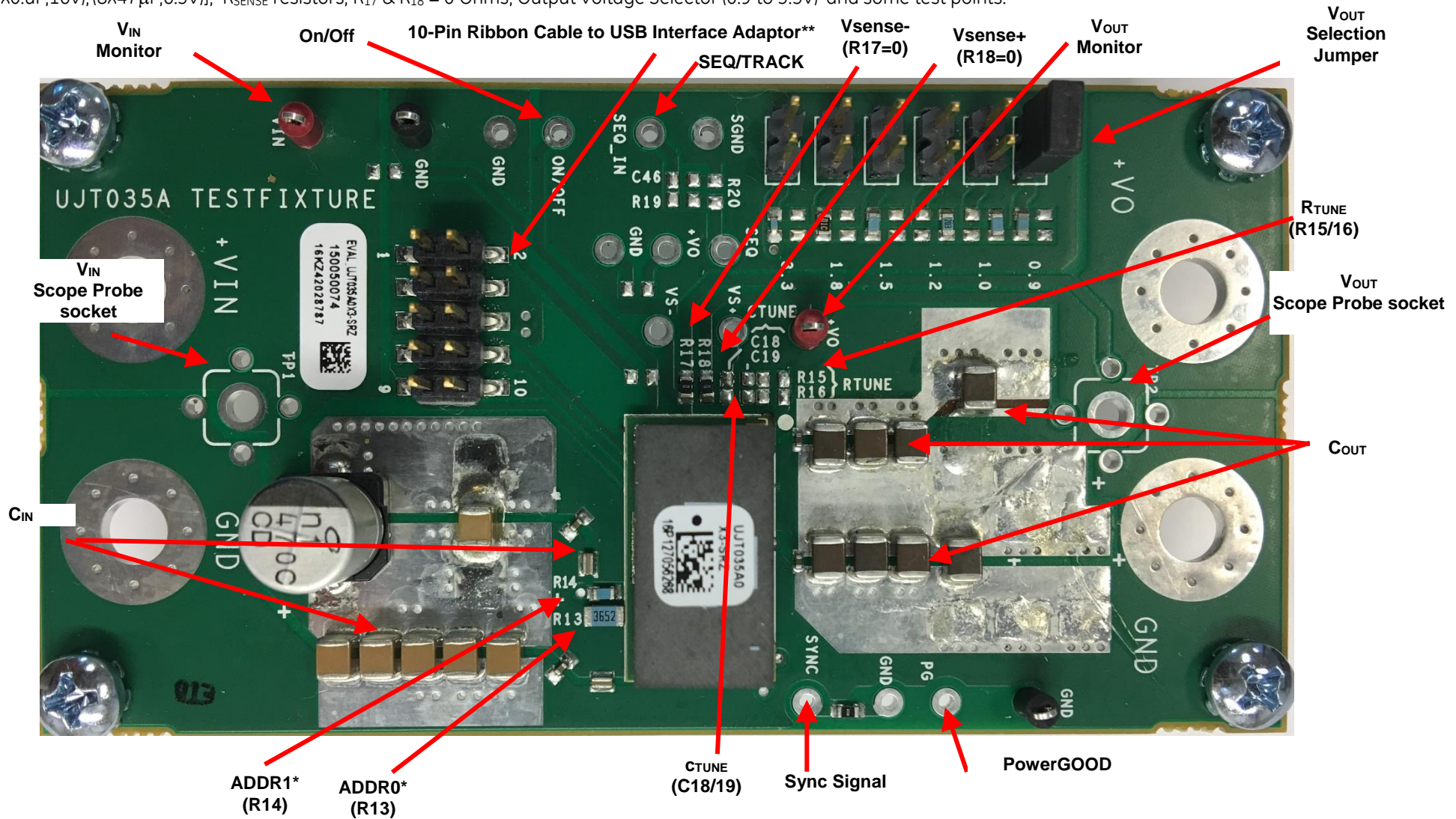


Figure 2. Power and Analog Signal Interface for the UJT035 Eval Board