

DESCRIPTION

The EVQ2451-G-00A is an evaluation board for the MPQ2451, a fixed 2MHz frequency step-down switching regulator with an integrated internal high-side high voltage power MOSFET. The IC provides 0.3A output with current mode control for fast loop response and easy compensation.

High power conversion efficiency over a wide load range is achieved by scaling down the switching frequency at light load condition to reduce the switching and gate driving losses.

The soft-start function helps prevent inductor current runaway during startup and thermal shutdown provides reliable, fault tolerant operation.

By switching at 2MHz, smaller value inductor and input/output capacitor can be used to lower down cost and save board space.

ELECTRICAL SPECIFICATIONS

Parameter	Symbol	Value	Units
Input Voltage	V_{IN}	8-36	V
Output Voltage	V_{OUT}	5	V
Output Current	I_{OUT}	0-0.3	A

FEATURES

- Wide Operating Input Range
- Fixed 2MHz Switching Frequency
- 0.3A Output Current
- Up to 90% Efficiency

APPLICATIONS

- High Voltage Power Conversion
- Automotive Systems
- Industrial Power Systems
- Distributed Power Systems
- Battery Powered Systems

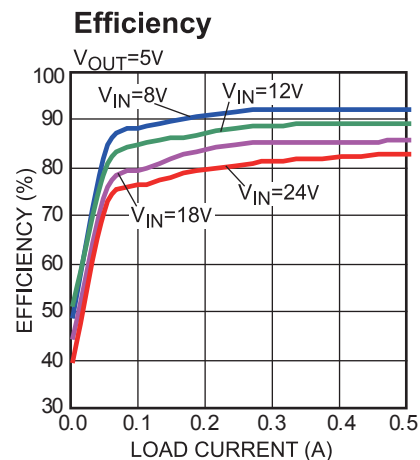
All MPS parts are lead-free and adhere to the RoHS directive. For MPS green status, please visit MPS website under Products, Quality Assurance page. "MPS" and "The Future of Analog IC Technology" are Registered Trademarks of Monolithic Power Systems, Inc.

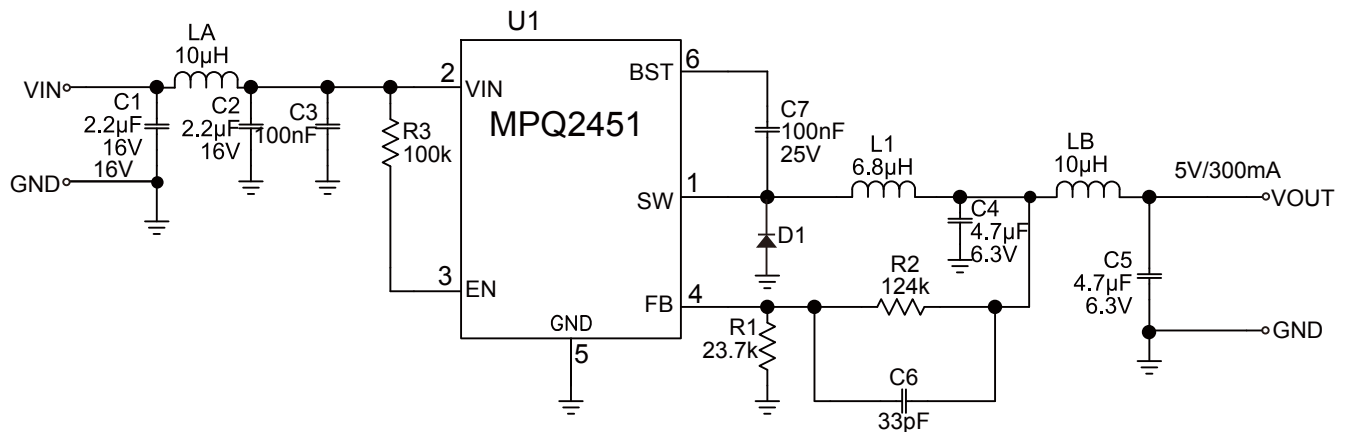
EVQ2451-G-01A EVALUATION BOARD



(L x W x H) 1.8" x 1.8" x 0.4"
4.6cm x 4.6cm x 1.0cm

Board Number	MPS IC Number
EVQ2451-G-01A	MPQ2451-G

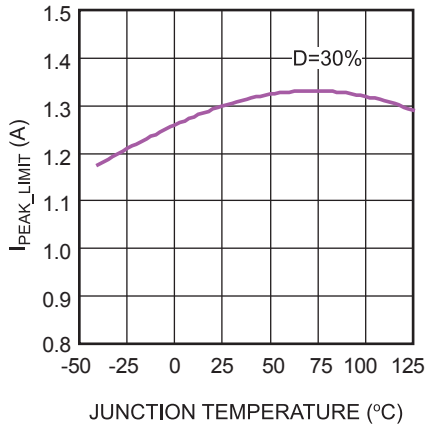


EVALUATION BOARD SCHEMATIC

EVQ2451-G-01A BILL OF MATERIALS

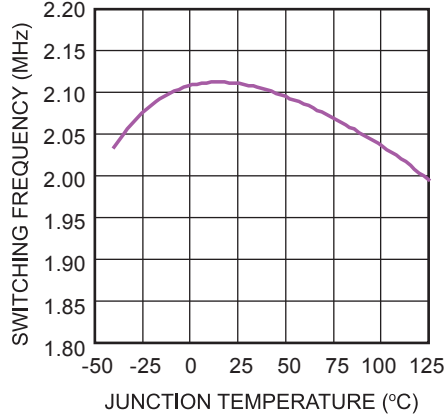
Qty	Ref	Value	Description	Package	Manufacturer	Manufacturer P/N
2	C1,C2	2.2µF	Ceramic Cap., 16V, 10%, X5R	0603	muRata	GRM188R61C225KE15D
2	C3,C7	0.1µF	Ceramic Cap., 25V, 10%, X5R	0402	muRata	GRM155R61E104KA87D
2	C4,C5	4.7µF	Ceramic Cap., 6.3V, 10%, X5R	0603	muRata	GRM188R60J475KE19D
	C6	33pF	Ceramic Cap., 50V, 10%, NP0	0402	muRata	GRM1555C1H330JZ01D
1	D1	40V/0.38A	Schottky Diode., 40V, 0.38A	SOD523	ZEETEX	ZLLS350TA
1	L1	6.8µH	Inductor, Idc=1A,Rdc=216mΩ	3x3mm	TDK	VLS3015E-6R8M
2	LA, LB	10µH	Inductor, Idc=0.5A	2x2x1.2mm	TDK	VLS2012ET-100M
1	R1	23.7kΩ	Film Res., 1%	0402	Panasonic	ERJ-2RKF2372X
1	R2	124kΩ	Film Res., 1%	0402	Yageo	RC0402FR-07124KL
1	R3	100kΩ	Film Res., 1%	0402	Yageo	RC0402JR-07100KL
4	U1	MPQ2451DG	Power Led Driver	QFN6L-2X2mm	MPS	MPQ2451DG-R3
1	VIN, GND, VOUT, GND		Test Point		HZ	China market

EVB TEST RESULTS

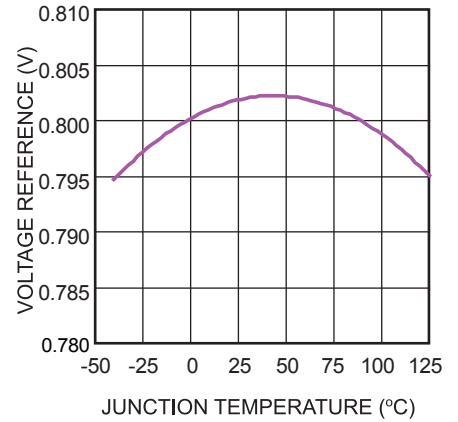
Current Limit vs. Junction Temperature



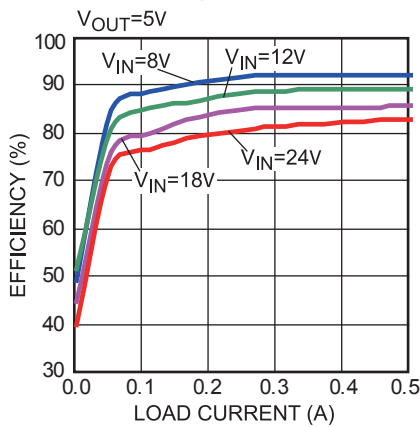
Frequency vs. Junction Temperature



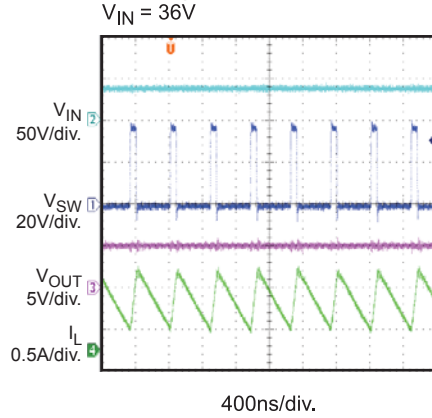
Voltage Reference vs. Junction Temperature



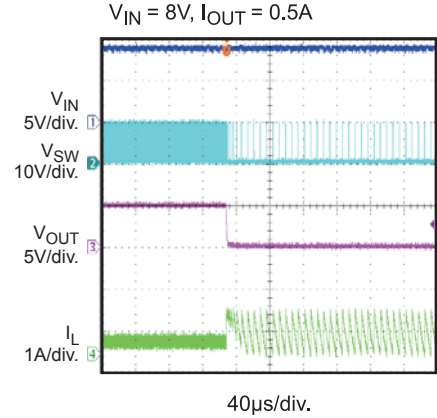
Efficiency



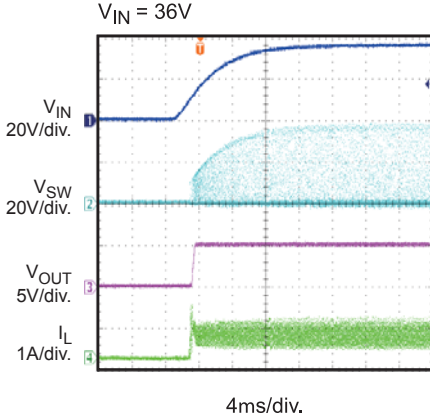
Steady State



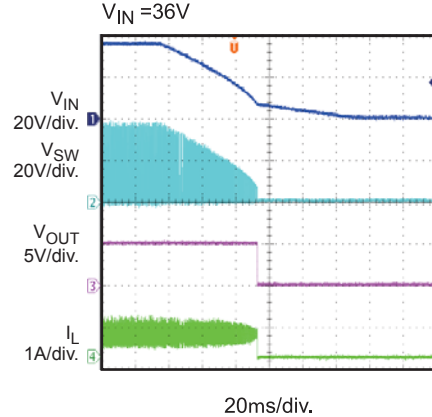
Short Output



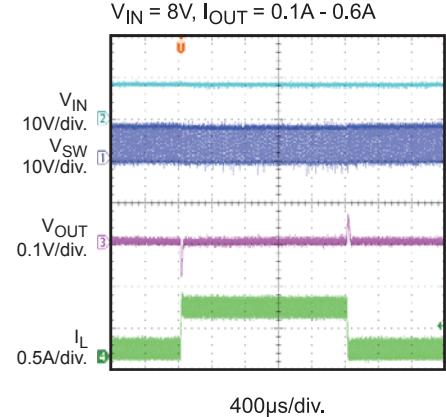
Power Ramp Up



Power Ramp Down

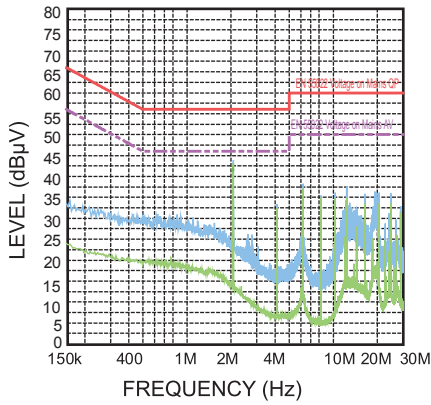


Load Transient

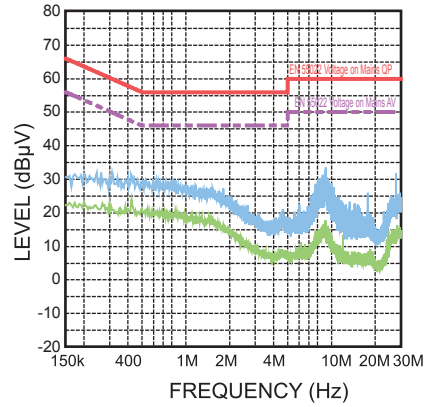


EVB TEST RESULTS *(continued)*

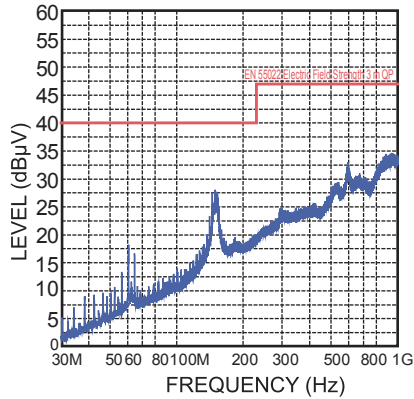
Conduction EMI Performance
12V to 5V, 0.3A



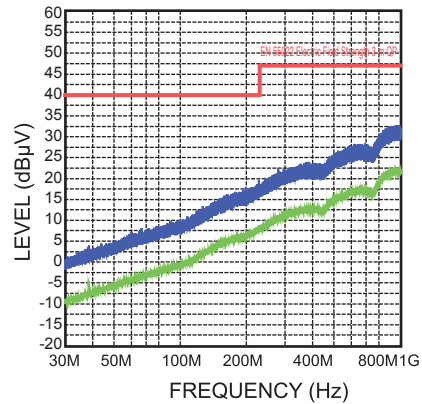
Conduction Ambient Noise



Radiation EMI Performance
12V to 5V, 0.3A



Radiation Ambient Noise



PRINTED CIRCUIT BOARD LAYOUT

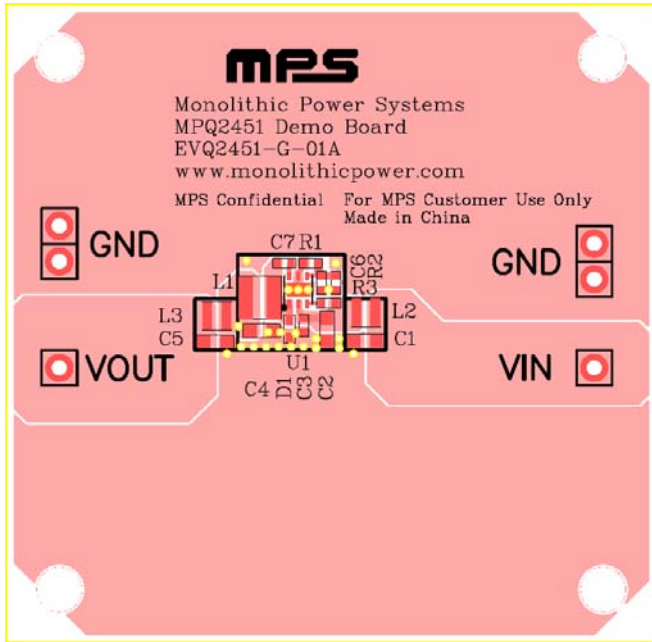


Figure 1—Top and Top Silk Layer

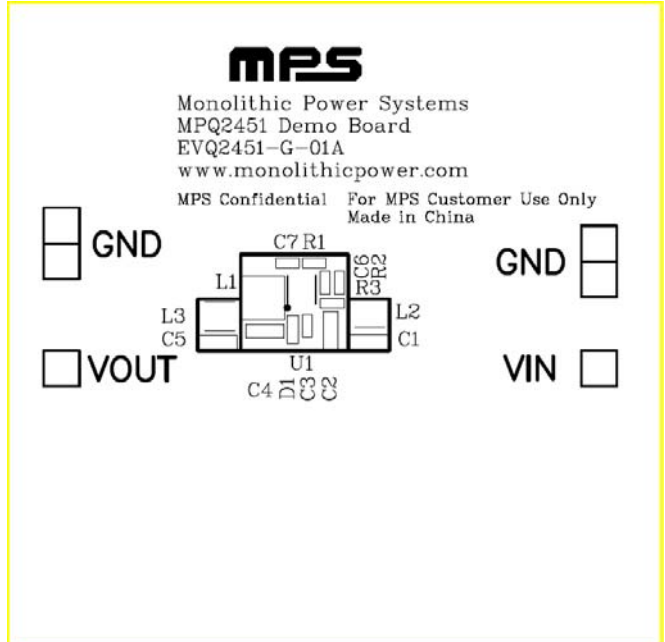


Figure 2—Top and Silk Layer

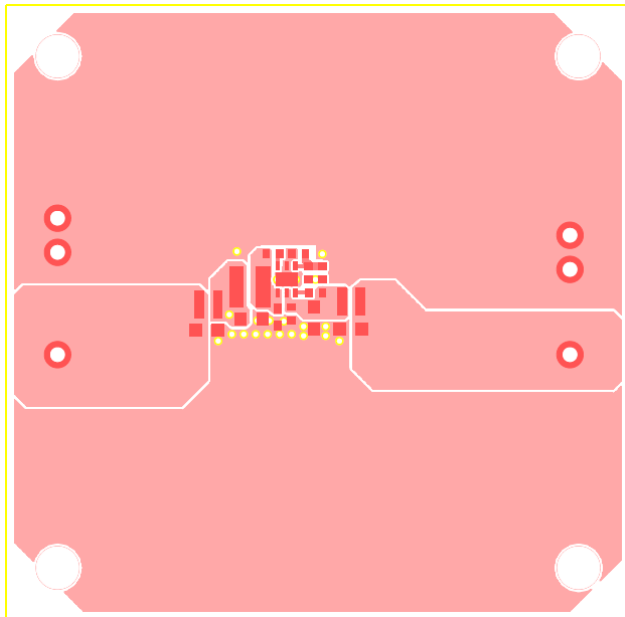


Figure 3- Top Layer

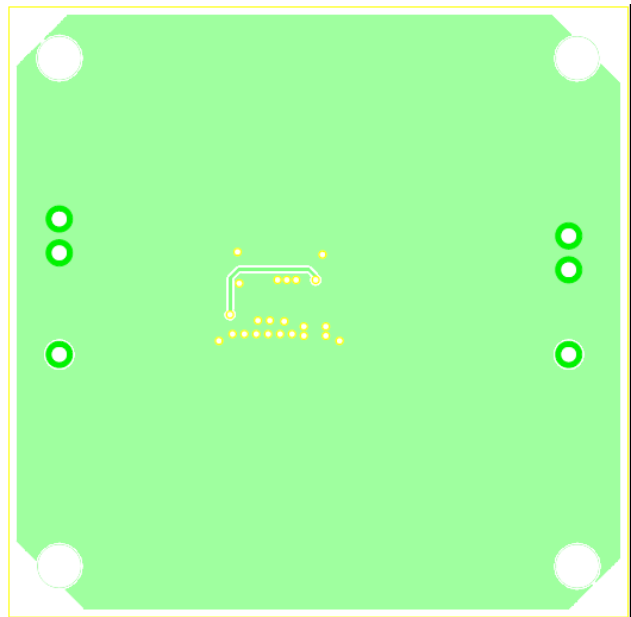


Figure 4—Bottom Layer