

EWP-202C WIRELESS ANNUNCIATOR SYSTEM



- Advanced dual-infrared beam and superior wireless technology
- Wireless multi-function receiver
- Dual channel receiver with status LED's
- 20 ft. detection range across doorway
- Independent entry/exit counters
- 200 ft. wireless RF transmission in open field
- 2 selective chime sounds per channel
- Chime volume control
- Resettable 6-digit counter (up to 999999)
- Power failure memory back-up
- Wireless push-button included
- 16 million I.D. codes system

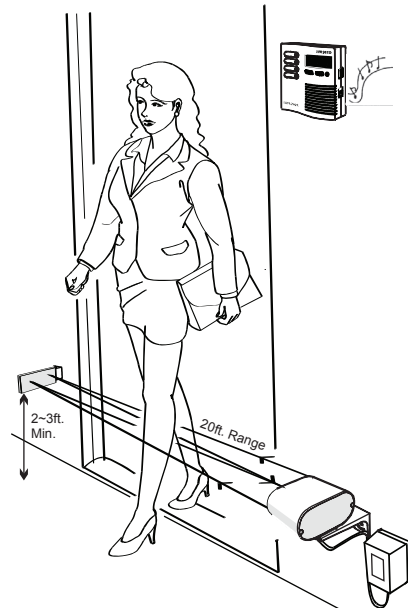
Stock number: 4130003

The EWP-202C is a two channel wireless annunciator system designed with a superior dual counter and active infrared technology. It delivers a pleasant chime along with a recorded count. It emits a continuous, invisible dual beam across the doorway to the reflector. When either beam is interrupted, it announces the entrance or exit of customers with a pleasant, distinguishable chime sound. Each event is counted, recorded, and registered by the built-in digital counter and can be viewed and compared later in both modes. The annunciator is also equipped with an alert mode that sounds the built-in siren when triggered, adding additional security. This is ideal for malls, office buildings, liquor stores, warehouses, parking structures, medical offices, and more.

Complete Kit Includes:

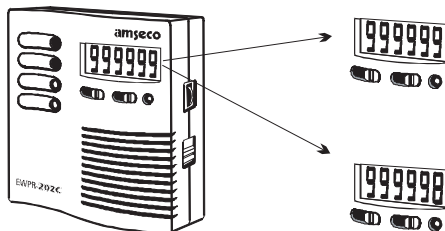
- 1 Infrared sensor/transmitter
- 1 Wireless receiver with built-in chime and counter
- 1 Wireless push-button
- 1 Reflector
- 2 Power transformers (12V AC 20VA)
- 1 Long plastic bracket
- 1 Short metal bracket
- 2 Short plastic brackets
- 2 6 ft. power cords with in-line switch
- 6 3/4" sheet metal screws
- 1 1/2" bolt with locking washer
- 4 1 1/4" machine screws with washer and nut
- 2 1/2" sheet metal screws

Application



Wireless Receiver

Keeps count on all incoming and outgoing customers and retains it in memory.



EWP-202C

WIRELESS ANNUNCIATOR SYSTEM

Specifications

| Model | EWPT-202 | EWPP-202 | EWPR-202 |
|-----------------------------------|-------------------------------------|----------------------------|---------------------------------|
| Description | Infrared Sensor/Transmitter | Wireless Push-Button | Wireless Receiver |
| Detection Method | Active Infrared | - | RF |
| Detection Range | 10 ft. JP2=ON 20 ft. JP2=OFF (f.s.) | - | - |
| Max. Transmission Range | 200 ft. Open Field | 200 ft. Open Field | - |
| Power Source | 12V AC 20 VA | 12V DC Battery Included | 12V AC 20VA |
| Power Consumption (Standby) | 50mA | - | 100mA |
| Power Consumption (In Activation) | 1 Amp | - | 500mA |
| Volume Control | - | - | 0-85dB |
| Chime Sounds Selectable | - | Dip Switch: 2 | Dip Switch: 1 |
| Response Time | 4m/sec | - | - |
| Light Source | Infrared Pulse Beam 950nm | - | - |
| Wireless Frequency | 315 Mhz | 315Mhz | 315Mhz |
| Chime Terminal Output (-) | Ground | - | - |
| Chime Terminal Output (+V) | 12V DC 1A | - | - |
| Chime Terminal Output (OC) | Exit Output (-) TR Output 1A | - | - |
| Chime Terminal Output (IC) | Entry Output (-) TR Output 1A | - | - |
| Terminal 1 & 2 | 12V AC Input | - | 12V AC Input |
| Terminal 3 | - | - | Relay Dry Contact NO.(2 sec) |
| Terminal 4 | - | - | Relay Dry Contact COM(2 sec) |
| Entry/Exit Time Delay | - | - | JP1 ON=30 sec JP1 OFF=60 sec |
| Alarm Sound Duration | - | - | 50 Sec |
| Alarm Sound ON/OFF | - | - | JP2ON/JP2OFF |
| Sensitivity | JP2 ON = Min JP2 OFF = Max | - | - |
| Travel Direction | SW1 Selectable | - | - |
| Blocked Infrared Beam Warning | JP1 Selective: OFF/10Sec/60Sec | - | - |
| Counter Memory | - | - | EEPROM |
| Installation | Indoor | Indoor | Indoor |
| Operating Temperature Range | 14 - 122°F (-10 - 50°C) | 14 - 122°F (-10 - 50°C) | 14 - 122°F (-10 - 50°C) |

f.s. = Factory Setting

Alert Mode

Protect restricted, unauthorized areas after hours by simply changing the setting on your receiver from CHIME to ALERT MODE. This feature provides a programmable entry/exit delay (30 or 60 seconds) and a 50 second audible alarm when triggered. The EWP-202C alarm relay output allows you to connect to any security control panel or to a number of other devices such as: video event recorder, self-contained siren, bell box, strobe, or any other device designed for alarm signaling to provide additional security.

Integration to Security Devices

