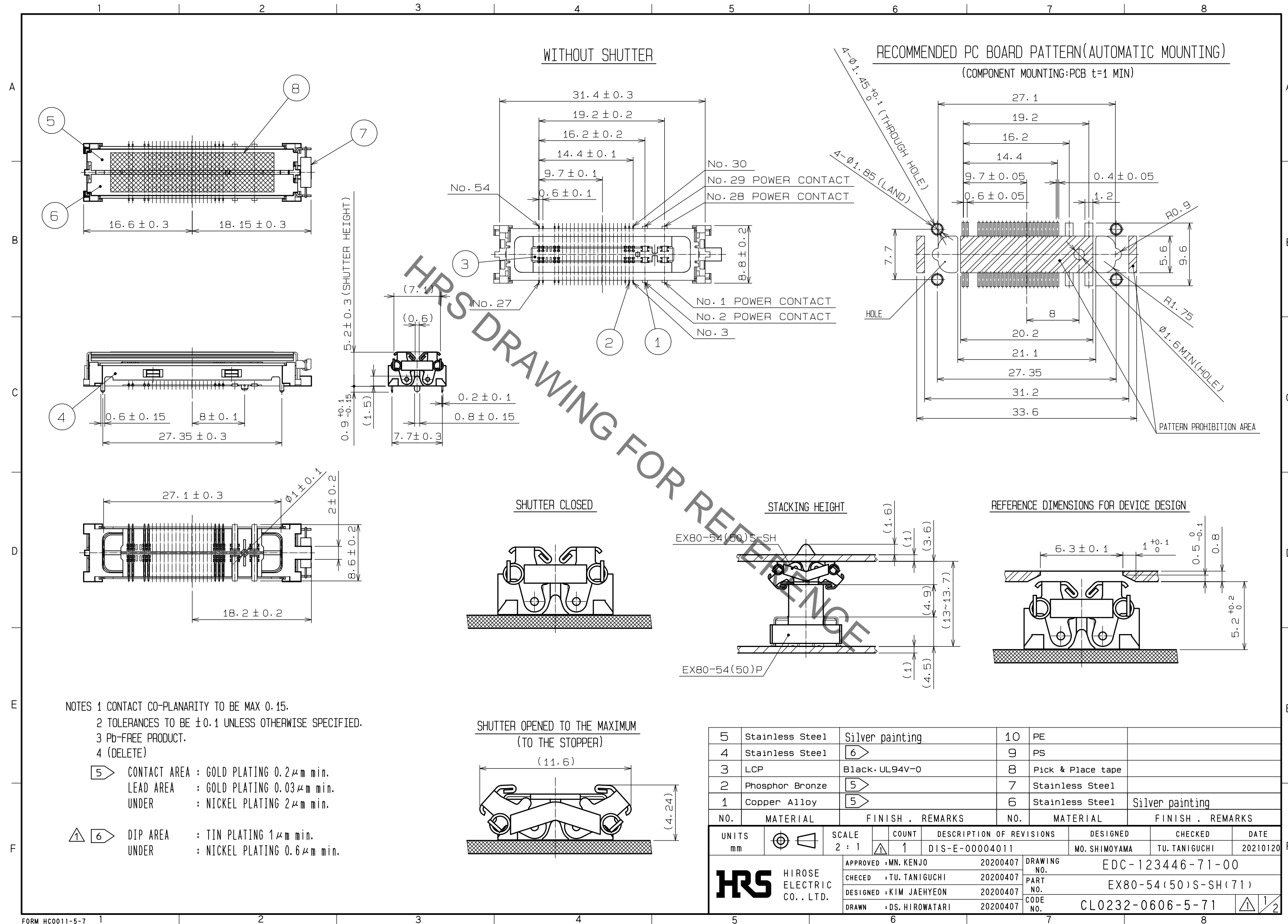


Jan.1.2022 Copyright 2022 HIROSE ELECTRIC CO., LTD. All Rights Reserved.
 In case of consideration for using Automotive equipment / device which demand high reliability, kindly contact our sales window correspondents.



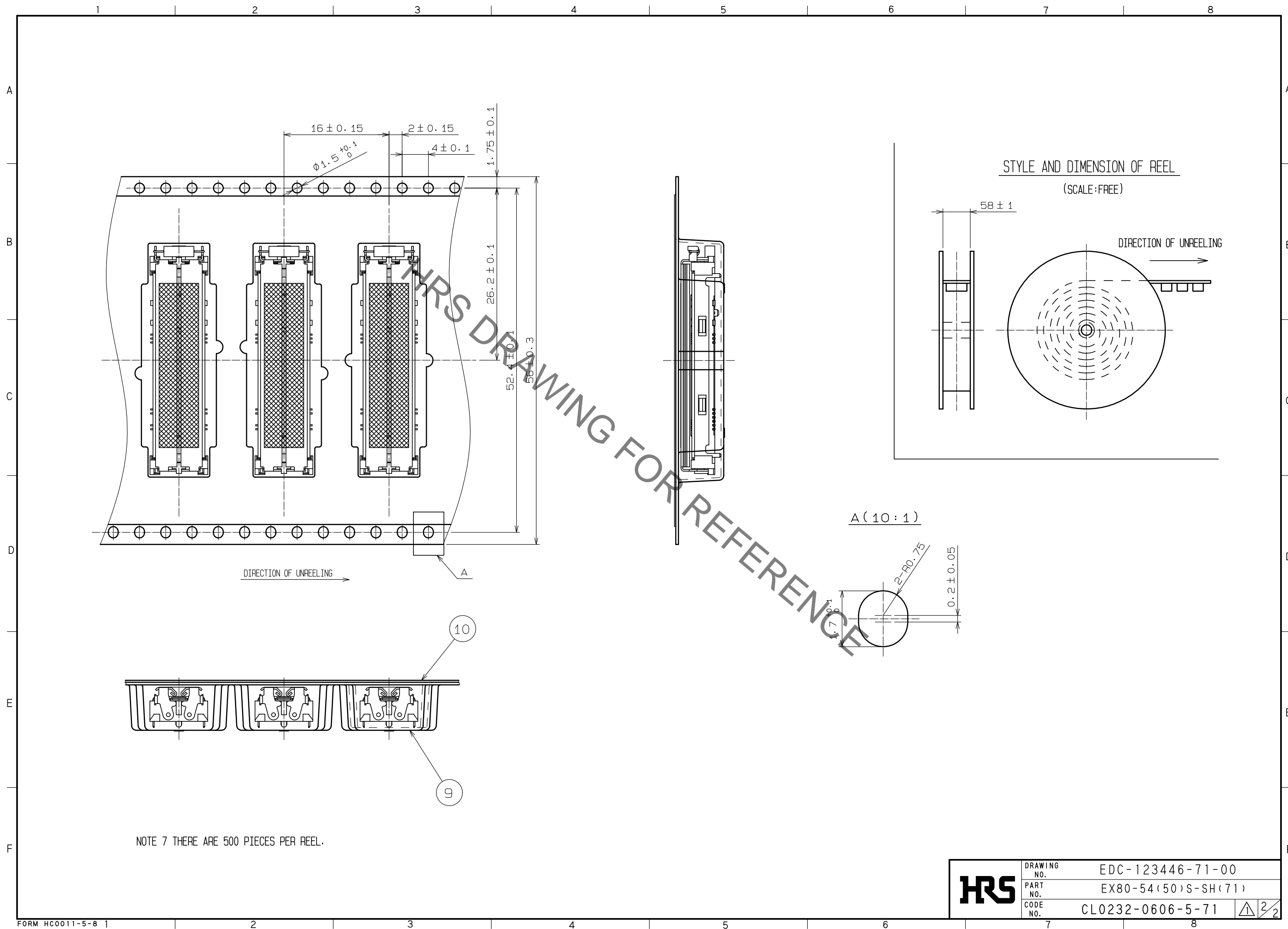
- NOTES
- CONTACT CO-PLANARITY TO BE MAX 0.15.
 - TOLERANCES TO BE ± 0.1 UNLESS OTHERWISE SPECIFIED.
 - Pb-FREE PRODUCT.
 - (DELETE)
- 5 CONTACT AREA : GOLD PLATING 0.2 μ m min.
 LEAD AREA : GOLD PLATING 0.03 μ m min.
 UNDER : NICKEL PLATING 2 μ m min.
- 6 DIP AREA : TIN PLATING 1 μ m min.
 UNDER : NICKEL PLATING 0.6 μ m min.

NO.	MATERIAL	FINISH . REMARKS	NO.	MATERIAL	FINISH . REMARKS
5	Stainless Steel	Silver painting	10	PE	
4	Stainless Steel	6	9	PS	
3	LCP	Black . UL94V-0	8	Pick & Place tape	
2	Phosphor Bronze	5	7	Stainless Steel	
1	Copper Alloy	5	6	Stainless Steel	Silver painting

UNITS	SCALE	COUNT	DESCRIPTION OF REVISIONS	DESIGNED	CHECKED	DATE
mm	2 : 1	1	DIS-E-00004011	MO. SHIMOYAMA	TU. TANIGUCHI	20210120

APPROVED	CHECKED	DESIGNED	DRAWN	DRAWING NO.	PART NO.	CODE NO.
·MN. KENJO	·TU. TANIGUCHI	·KIM JAEHYEON	·DS. HIROWATARI	20200407	20200407	20200407
				EDC-123446-71-00	EX80-54(50)S-SH(71)	CL0232-0606-5-71

Jan.1.2022 Copyright 2022 HIROSE ELECTRIC CO., LTD. All Rights Reserved.
In case of consideration for using Automotive equipment / device which demand high reliability, kindly contact our sales window correspondents.



HRS	DRAWING NO.	EDC-123446-71-00
	PART NO.	EX80-54(50)S-SH(71)
	CODE NO.	CL0232-0606-5-71
		2/2