

RES-D

~16° diffused spot beam optimized for LUXEON Rebel. Assembly with white holder.

TECHNICAL SPECIFICATIONS:

| | |
|----------------|----------------|
| Dimensions | 21.6 x 21.6 mm |
| Height | 12.9 mm |
| Fastening | tape |
| ROHS compliant | yes ⓘ |



MATERIAL SPECIFICATIONS:

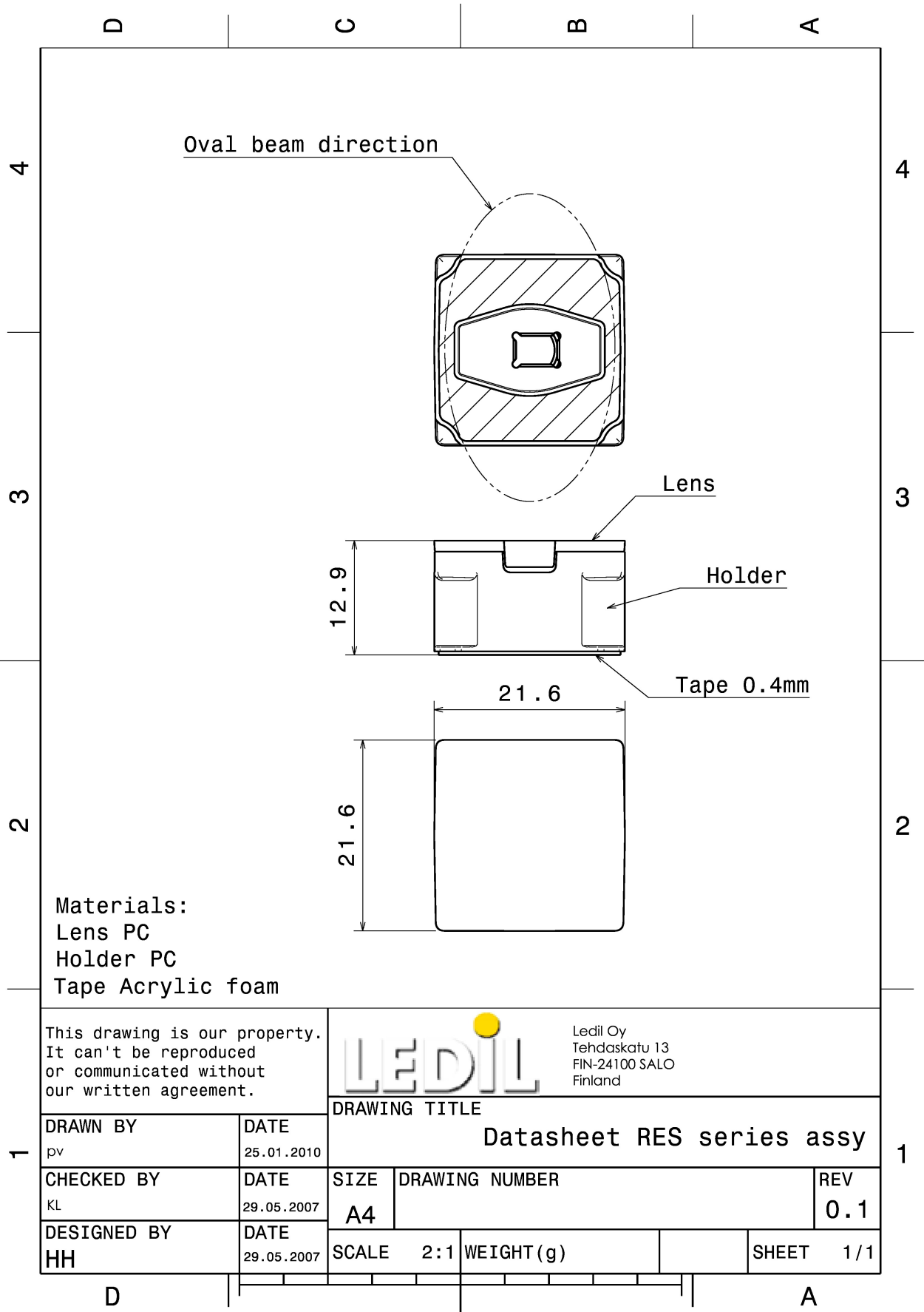
| Component | Type | Material | Colour | Finish |
|------------------------|-------------|--------------|--------|--------|
| F10284_ROSE-B-B-D | Single lens | PC | clear | |
| C10358_ROSE-HLD-RE-WHT | Holder | PC | white | |
| C10278_ROSE-TAPE | Tape | Acrylic foam | black | |

ORDERING INFORMATION:

Quantities for one set:

| | |
|-------------|---|
| Single lens | 1 |
| Holder | 1 |
| Tape | 1 |

| Component | | Qty in box | MOQ | MPQ | Box weight (kg) |
|--------------------------------|-------------|------------|-----|------|-----------------|
| F10284_ROSE-B-B-D | Single lens | 1980 | 180 | 180 | 8.0 |
| » Box size: 480 x 280 x 300 mm | | | | | |
| C10358_ROSE-HLD-RE-WHT | Holder | 4000 | | 2000 | 7.3 |
| » Box size: 480 x 280 x 300 mm | | | | | |
| C10278_ROSE-TAPE | Tape | 10000 | | | |
| » Box size: | | | | | |

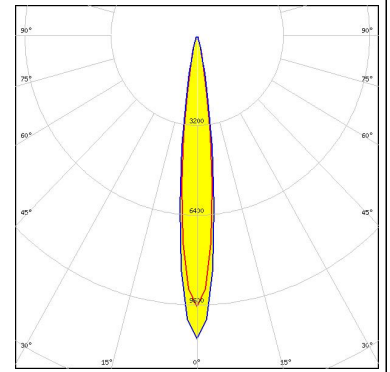


See also our general installation guide: www.ledil.com/installation_guide

PHOTOMETRIC DATA (MEASURED):

LUMILEDS

LED LUXEON Rebel
FWHM / FWTM 13.0° / 26.0°
Efficiency 84 %
Peak intensity 9.7 cd/lm
LEDs/each optic 1
Light colour White
Required components:



LUMILEDS

LED LUXEON Rebel ES
FWHM / FWTM 13.0° / 27.0°
Efficiency 86 %
Peak intensity 10 cd/lm
LEDs/each optic 1
Light colour White
Required components:

