

## RES-M

~30° medium beam optimized for LUXEON Rebel. Assembly with white holder.

### TECHNICAL SPECIFICATIONS:

Dimensions	21.6 x 21.6 mm
Height	12.9 mm
Fastening	tape
ROHS compliant	yes ⓘ

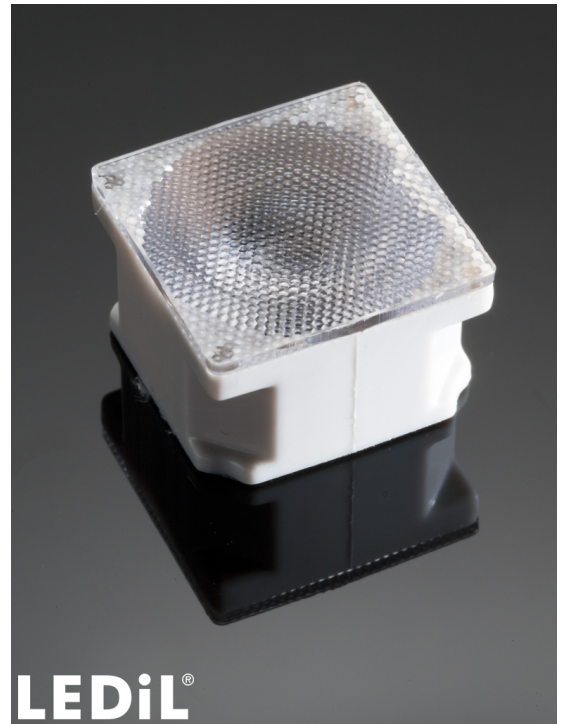
### MATERIAL SPECIFICATIONS:

Component	Type	Material	Colour	Finish
F10285_ROSE-B-B-M	Single lens	PC	clear	
C10358_ROSE-HLD-RE-WHT	Holder	PC	white	
C10278_ROSE-TAPE	Tape	Acrylic foam	black	

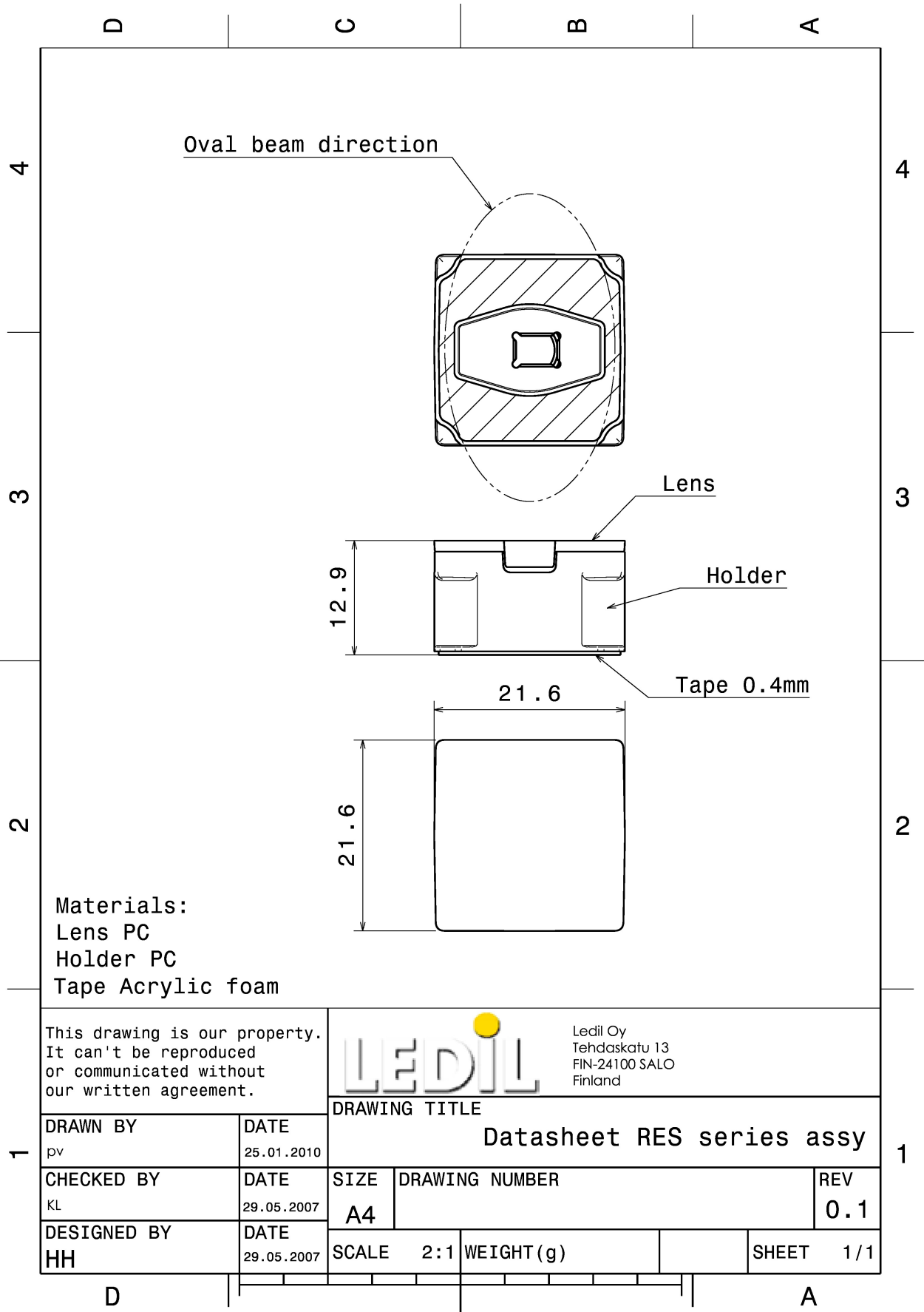
### ORDERING INFORMATION:

#### Quantities for one set:

Single lens	1
Holder	1
Tape	1



Component		Qty in box	MOQ	MPQ	Box weight (kg)
F10285_ROSE-B-B-M	Single lens	1980	180	180	8.1
» Box size: 480 x 280 x 300 mm					
C10358_ROSE-HLD-RE-WHT	Holder	4000		2000	7.3
» Box size: 480 x 280 x 300 mm					
C10278_ROSE-TAPE	Tape	10000			
» Box size:					

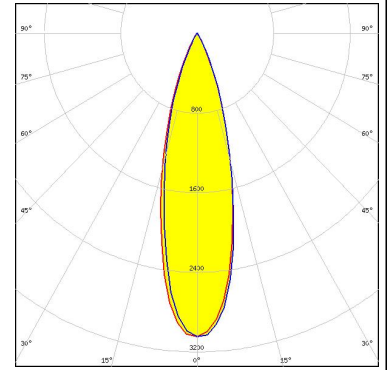


See also our general installation guide: [www.ledil.com/installation\\_guide](http://www.ledil.com/installation_guide)

### PHOTOMETRIC DATA (MEASURED):

#### LUMILEDS

LED LUXEON Rebel  
FWHM / FWTM 30.0° / 52.0°  
Efficiency 83 %  
Peak intensity 3.4 cd/lm  
LEDs/each optic 1  
Light colour White  
Required components:



#### LUMILEDS

LED LUXEON Rebel ES  
FWHM / FWTM 29.0° / 52.0°  
Efficiency 84 %  
Peak intensity 2.7 cd/lm  
LEDs/each optic 1  
Light colour White  
Required components:

