

RES-O

~45° + 15° oval beam for LUXEON Rebel.
Assembly with white holder.

TECHNICAL SPECIFICATIONS:

Dimensions	21.6 x 21.6 mm
Height	12.9 mm
Fastening	tape
ROHS compliant	yes ⓘ

MATERIAL SPECIFICATIONS:

Component	Type	Material	Colour	Finish
F10286_ROSE-B-B-O	Single lens	PC	clear	
C10358_ROSE-HLD-RE-WHT	Holder	PC	white	
C10278_ROSE-TAPE	Tape	Acrylic foam	black	

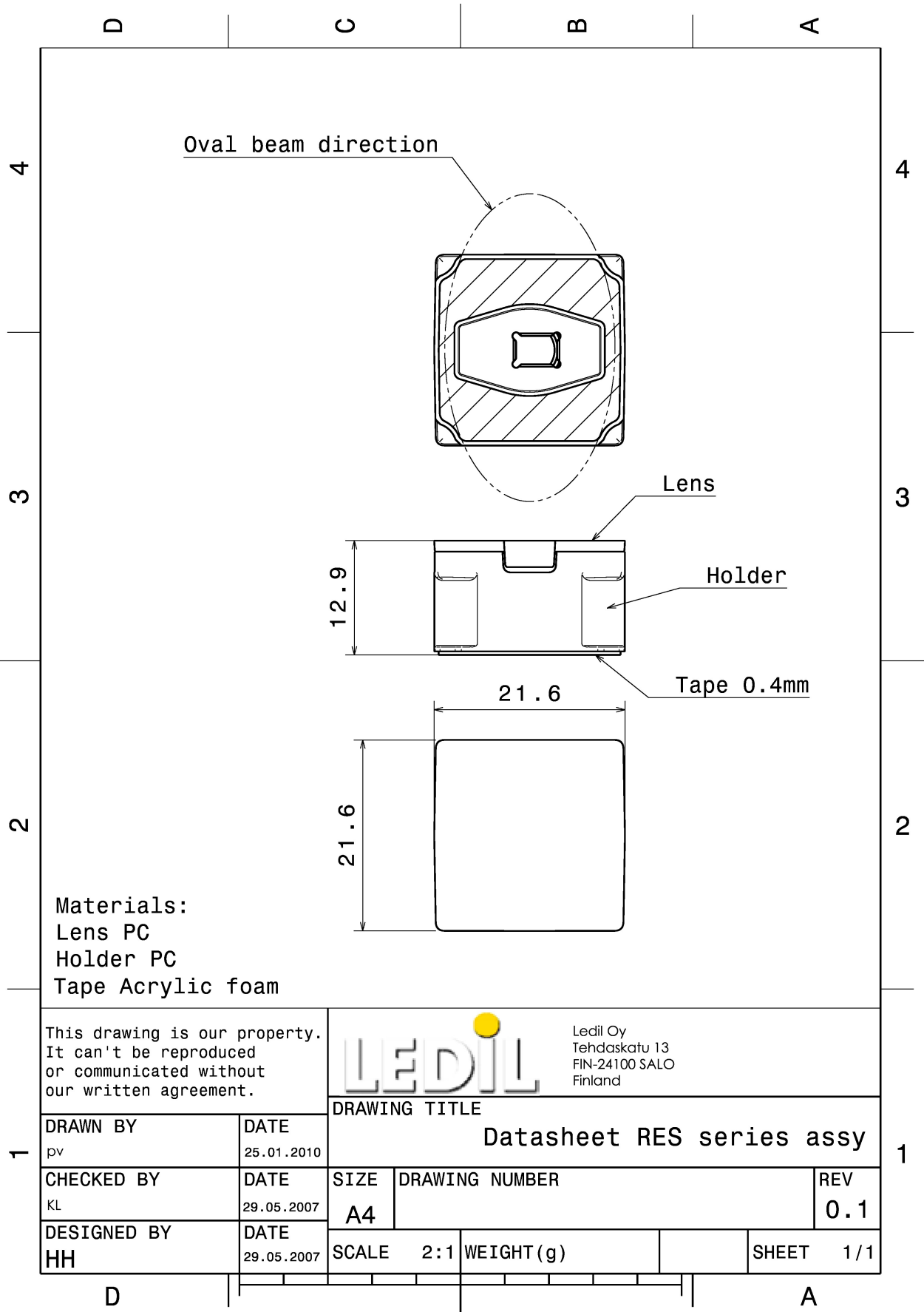
ORDERING INFORMATION:

Quantities for one set:

Single lens	1
Holder	1
Tape	1



Component		Qty in box	MOQ	MPQ	Box weight (kg)
F10286_ROSE-B-B-O	Single lens	1980	180	180	8.0
» Box size: 480 x 280 x 300 mm					
C10358_ROSE-HLD-RE-WHT	Holder	4000		2000	7.3
» Box size: 480 x 280 x 300 mm					
C10278_ROSE-TAPE	Tape	10000			
» Box size:					

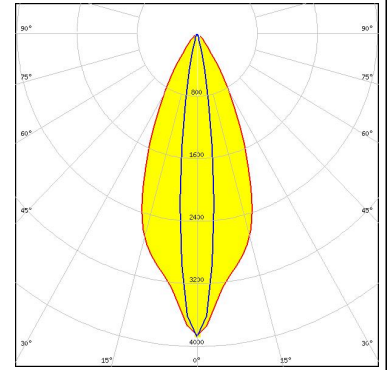


See also our general installation guide: www.ledil.com/installation_guide

PHOTOMETRIC DATA (MEASURED):

LUMILEDS

LED LUXEON Rebel
 FWHM / FWTM 42.0 + 13.0° / 72.0 + 26.0°
 Efficiency 80 %
 Peak intensity 4 cd/lm
 LEDs/each optic 1
 Light colour White
 Required components:



LUMILEDS

LED LUXEON Rebel ES
 FWHM / FWTM 47.0 + 14.0° / 74.0 + 30.0°
 Efficiency 81 %
 Peak intensity 3 cd/lm
 LEDs/each optic 1
 Light colour White
 Required components:

