

LR1-W

~40° wide beam optimized for LUXEON Rebel.
14.3 mm high assembly.

TECHNICAL SPECIFICATIONS:

Dimensions	Ø 21.6 mm
Height	14.3 mm
Fastening	glue
ROHS compliant	yes ⓘ



MATERIAL SPECIFICATIONS:

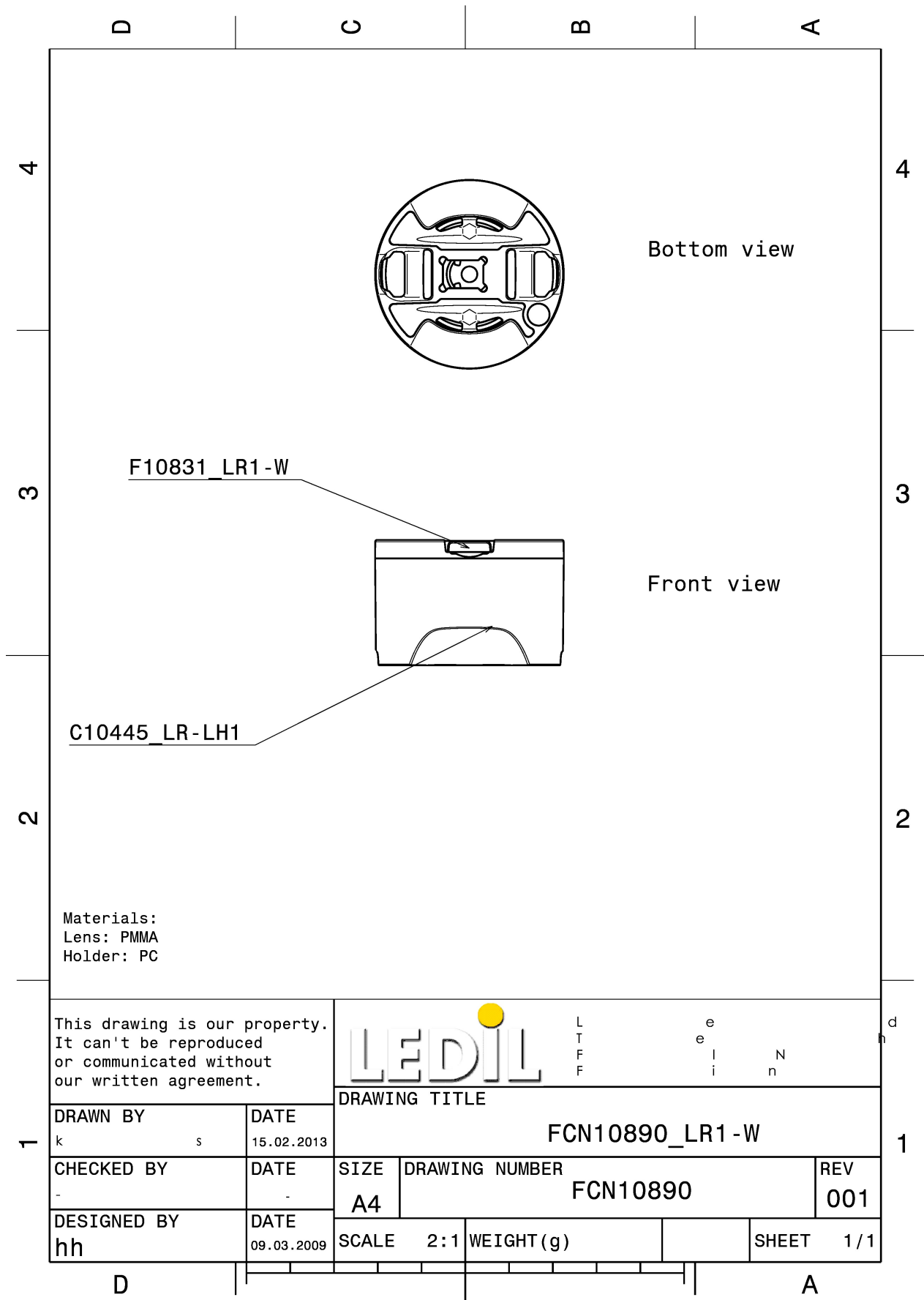
Component	Type	Material	Colour	Finish
F10831_LR1-W	Single lens	PMMA	clear	
C10445_LR-LH1	Holder	PC	white	

ORDERING INFORMATION:

Quantities for one set:

Single lens	1
Holder	1

Component		Qty in box	MOQ	MPQ	Box weight (kg)
F10831_LR1-W	Single lens	1632	288	48	6.2
» Box size: 470 x 235 x 270 mm					
C10445_LR-LH1	Holder	4000	288	48	7.1
» Box size: 480 x 280 x 300 mm					



Materials:
Lens: PMMA
Holder: PC

This drawing is our property.
It can't be reproduced
or communicated without
our written agreement.



DRAWN BY k s		DATE 15.02.2013	DRAWING TITLE FCN10890_LR1 -W			
CHECKED BY -	DATE -	SIZE A4	DRAWING NUMBER FCN10890		REV 001	
DESIGNED BY hh	DATE 09.03.2009	SCALE 2:1	WEIGHT (g)	SHEET 1/1		

See also our general installation guide: www.ledil.com/installation_guide

PHOTOMETRIC DATA (MEASURED):



LED LUXEON Rebel
FWHM / FWTM 48.0°
Efficiency 94 %
LEDs/each optic 1
Light colour White
Required components:

