

JENNY-8X1-40

~40° beam. 8X1 variant.

SPECIFICATION:

Dimensions	280.0 x 35.0 mm
Height	15 mm
Fastening	glue, pin
ROHS compliant	yes ⓘ

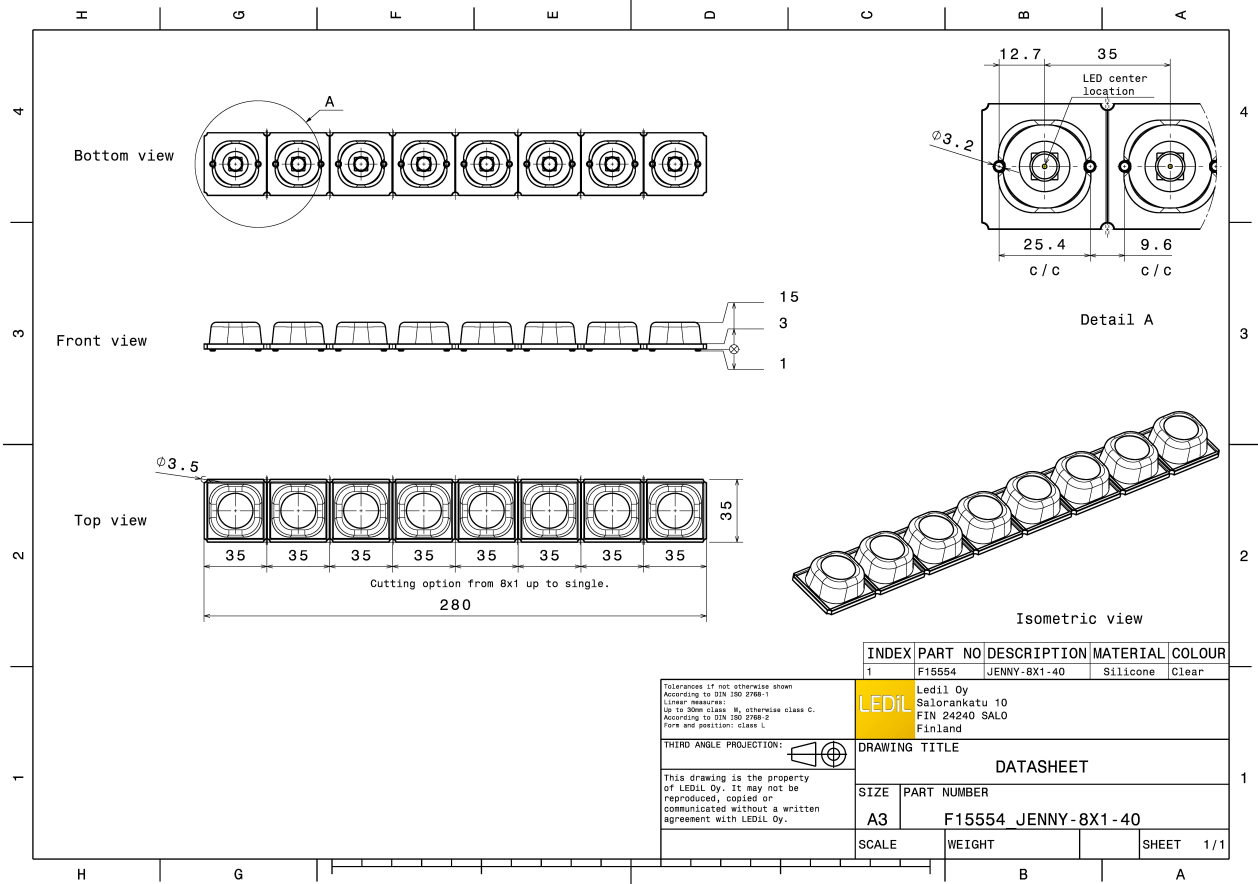
MATERIALS:

Component	Type	Material	Colour	Finish
JENNY-8X1-40	Multi-lens	Silicone	clear	



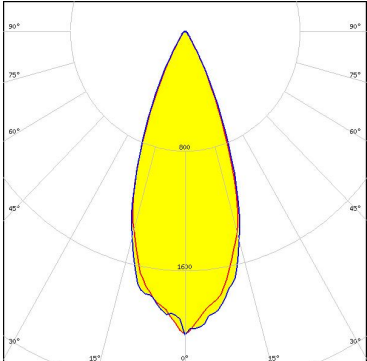
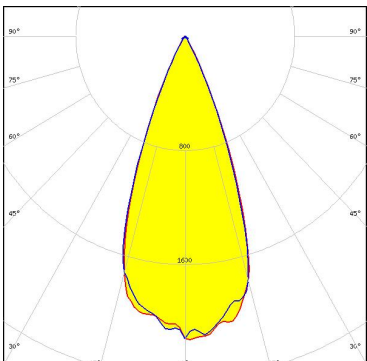
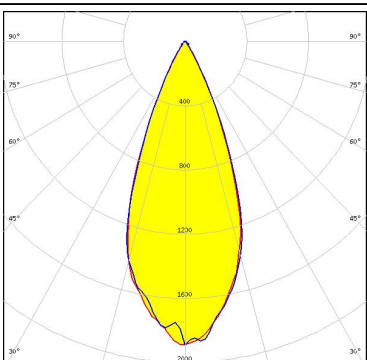
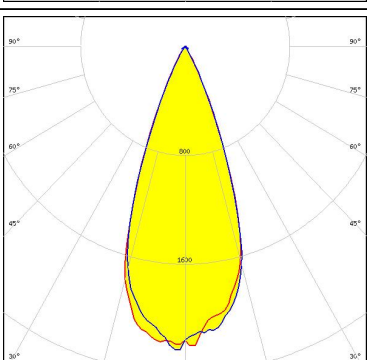
ORDERING INFORMATION:

Component	Qty in box	MOQ	MPQ	Box weight (kg)
F15554_JENNY-8X1-40 » Box size: 398 x 298 x 265 mm	140	20	10	9.7

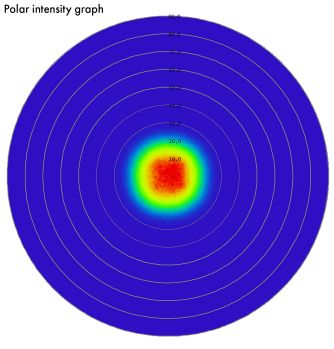
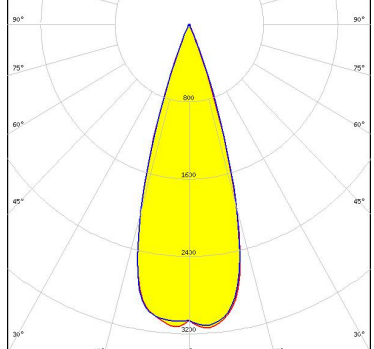
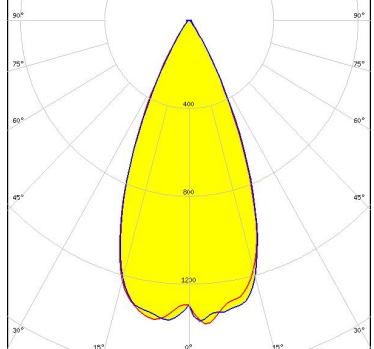
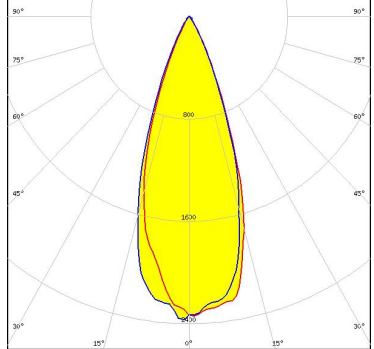


See also our general installation guide: www.ledil.com/installation_guide

OPTICAL RESULTS (SIMULATED):

<p>CREE LEDs</p> <p>LED: MHD-E/G FWHM / FWTM: 39.0° / 62.0° Efficiency: 95 % Peak intensity: 2 cd/lm LEDs/each optic: 1 Light colour: White Required components:</p>	
<p>CREE LEDs</p> <p>LED: MK-R FWHM / FWTM: 40.0° / 56.0° Efficiency: 96 % Peak intensity: 2.2 cd/lm LEDs/each optic: 1 Light colour: White Required components:</p>	
<p>CREE LEDs</p> <p>LED: XHP70 FWHM / FWTM: 40.0° / 62.0° Efficiency: 96 % Peak intensity: 1.9 cd/lm LEDs/each optic: 1 Light colour: White Required components:</p>	
<p>LUMILEDS</p> <p>LED: LUXEON M/MX FWHM / FWTM: 39.0° / 57.0° Efficiency: 95 % Peak intensity: 2.2 cd/lm LEDs/each optic: 1 Light colour: White Required components:</p>	

OPTICAL RESULTS (SIMULATED):

<p>NICHIA</p> <p>LED: NCSU276C FWHM / FWTM: 34.0° / 46.0° Efficiency: 97 % LEDs/each optic: 1 Light colour: UV-A Required components:</p>	<p>Polar intensity graph</p> 	
<p>NICHIA</p> <p>LED: NV4x144A FWHM / FWTM: 45.0° / 66.0° Efficiency: 84 % Peak intensity: 1.5 cd/lm LEDs/each optic: 1 Light colour: White Required components:</p>		
<p>OSRAM <small>Opto Semiconductors</small></p> <p>LED: Duris S10 FWHM / FWTM: 36.0° / 57.0° Efficiency: 96 % Peak intensity: 2.4 cd/lm LEDs/each optic: 1 Light colour: White Required components:</p>		
<p>OSRAM <small>Opto Semiconductors</small></p> <p>LED: OSCONIQ P 7070 FWHM / FWTM: 37.0° / 54.0° Efficiency: 96 % Peak intensity: 2.5 cd/lm LEDs/each optic: 1 Light colour: White Required components:</p>		